

Local Matters Forum 2024

Ashfield-Djarrawunang – 30 July 2024



EV Kerbside Charging Grant

- 3 EV kerbside charging partners - EVX, EVSE and PLUS ES
- Secured funding for 136 charging ports
- All chargers to be installed by April 2025 and open to the public 24 hours a day



Types of chargers

- 99 x 22kW chargers (134 charging ports)
- 1 x 60kW charger (2 charging ports)
- 93 dedicated charging bays and 41 non-dedicated bays
- All chargers are BYO cables except for 60kW charger that has CCS2 charger



GreenWay

Cooks to Cove



Ecological corridor
with endangered
fauna communities
and community
bushcare sites



2km of
Pedestrian
and Cycle
Sharepath



Linking 6
Light Rail
Stops



3 New
Tunnels



1 Dog-off
Leash Area



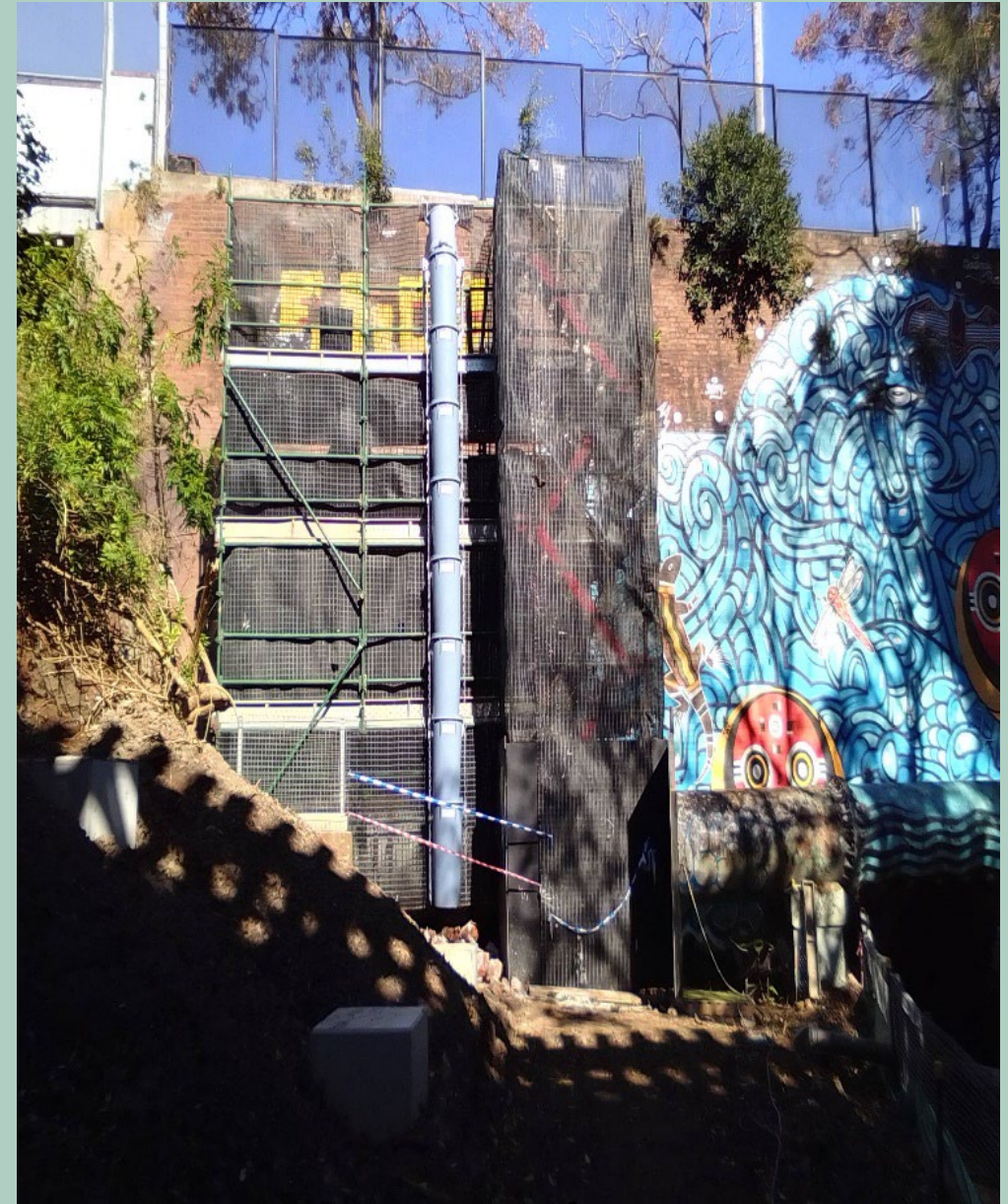
Nature Play
Area



2 Community
Parks



Greenway @ Cadigal Reserve



Greenway @ Lewisham West



Greenway @ Davis Street, Dulwich Hill



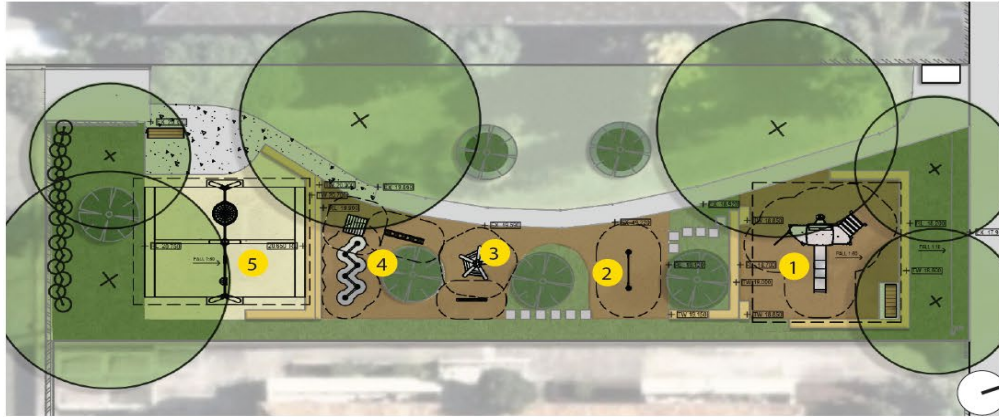
Greenway @ Constitution Road, Dulwich Hill



Greenway @ Hercules Street, Parklands



Kensington Road playground upgrade



1
Multiplay unit



2
Rope traverse



3
Tee-pee with seating



4
Nature play elements: Alligator crossing, Timber platform, Balance beam, Zig-zag balance beam



5
Double-bay swing



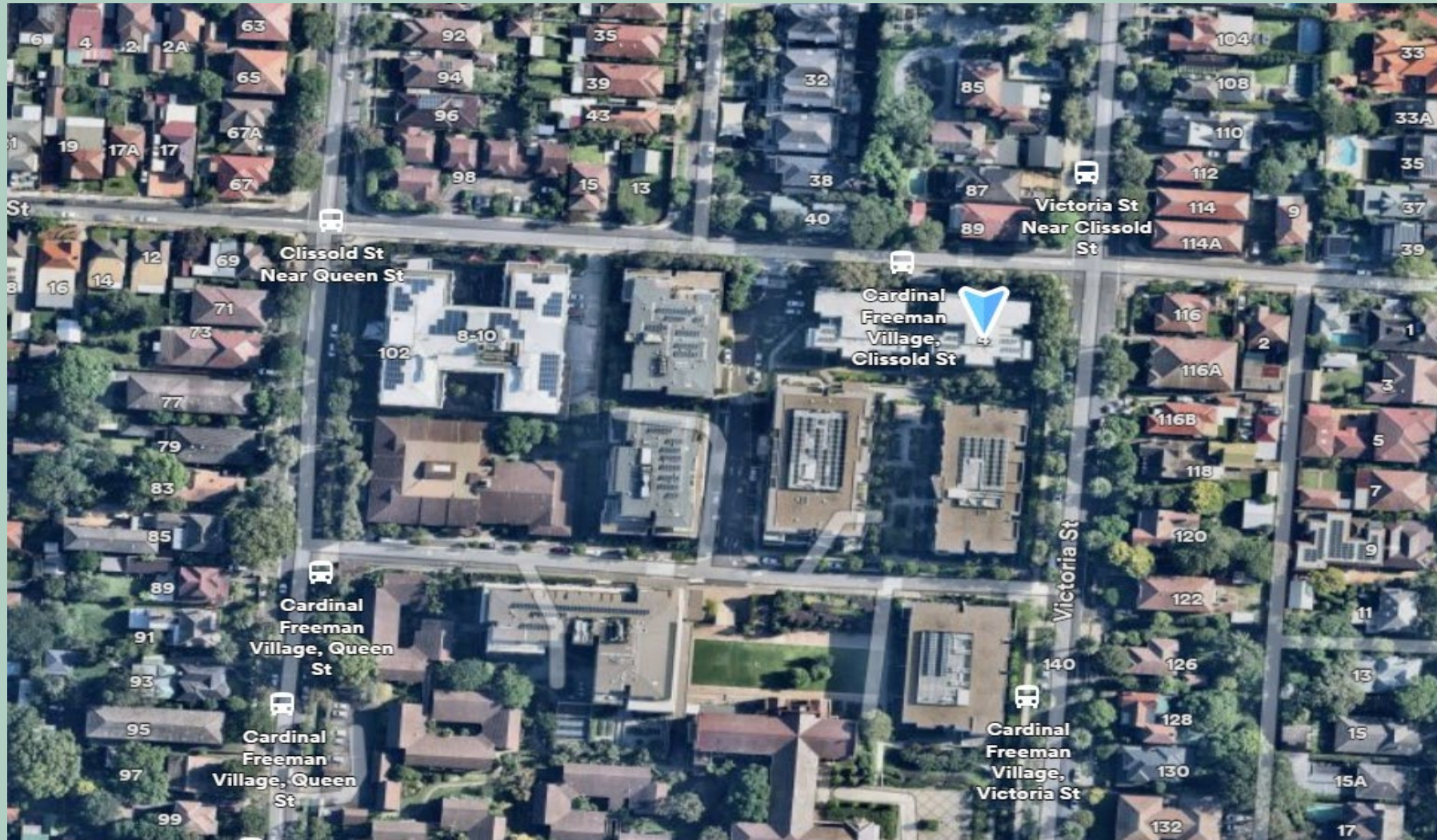
Hammond Park Amenities



Elizabeth Street, Ashfield Upgrade



Local Roads - Safety



Sustainability Hub EV Charging and Solar



Yeo Park Inclusive Playground



Sporting Grounds Lighting Trial



INNER WEST

Lighting Trial Details

Proposal is to extend the lighting hours at all council-managed sports grounds:

- allowing lights to remain on until at least 9:00pm (winter only)
- seven days a week
- between June 1 and October 1

Council aims to keep our sporting grounds open to maximise community recreational use and benefit after dark. However, in periods of wet weather or for maintenance and upgrades the sporting grounds may be closed and lighting will be automatically switched off by Council.

Twenty Three local sporting grounds have been nominated for the Trial.

A public survey can be located on Council's YourSay Inner West
Page: [Sports ground lighting trial | Your Say Inner West \(nsw.gov.au\)](https://www.nsw.gov.au/your-say-inner-west/sports-ground-lighting-trial)

Survey Closes on 31 August 2024



Which Council managed sports grounds are in the trial?

1. Algie Park
2. Arlington Recreation Reserve
3. Ashfield Park
4. Balmain Road (Callan Park)
5. Birchgrove Oval
6. Blackmore Park
7. Camperdown Oval
8. Centenary Park
9. Cohen Park
10. Easton Park
11. Glover Street (Callan Park)
12. Hammond Park
13. HJ Mahoney Reserve
14. King George Park
15. Leichhardt #2
16. Leichhardt #3
17. Mackey Park
18. Marrickville Park
19. Petersham Park
20. Pratten Park
21. Steel Park
22. Tempe Reserve
23. Waterfront Drive (Callan Park)

Which are not in the trial?

1. Camdenville Park - closed due to upgrade works
2. Lambert Park - due to leasing arrangements
3. Leichhardt Oval - due to conditions in Park Plan of Management
4. Henson - Sports ground lighting extension already in place <https://yoursay.innerwest.nsw.gov.au/henson-parklig...>



Upcoming Forums

- **Stanmore-Damun**

Date and time: Tuesday 27 August 2024, 6pm

Venue: Petersham Service Centre, Level 3 Council Chambers, Petersham

- **Balmain-Baludarri**

Date and time: Tuesday 29 October 2024, 6pm

Venue: Balmain Town Hall, Balmain

- **Leichhardt-Guldadya**

Date and time: Tuesday 25 November 2024, 6pm

Venue: Annandale Community Centre, Annandale