

Local Matters Forum 2024

Marrickville-Midjuburi – Tuesday 26 November





Camdenville Park upgrade

Camdenville
Park

Wells St
Darley St
Lord St
Edgware Rd
Bedwin Rd
May St
Hutchinson St
Unwins Bridge Rd
Conway Pl
Brown St
Lackey St
Council St
Caroline Ln
May St
Applebee St
Short St
Princes Hwy Opp Short St
Barrow Park Rd
King St
King St Opp St Peters Station
Sydney Park
Sydney Park
Marrickville Metro, Smidmore St
St Pius Catholic Primary School, Edgware Rd
St Peters Station
Princes Hwy



- 1. Sports field upgrade
- 2. New shared path (walking and cycling)
- 3. New pedestrian circuit and link paths
- 4. BMX pump track
- 5. Little kids pump track

- 6. New central play space
- 7. Upgraded corner space
- 8. 'Peter Bulger Wetlands' investigation
- 9. Possible future parking
- 10. Amenities building renewal



INNER WEST





INNER WEST

Henson Park Upgrade





INNER WEST

Mackey Park sports ground upgrade

The scope of works include:

- Sports field regrading
- Minor maintenance to existing sub-surface drainage system
- New Santa Anna couch turfgrass
- Upgraded LED sports field lighting (200 lux)
- 2 new cricket nets
- Replacement of existing cricket wicket synthetic grass

INNER WEST



Tempe Reserve amenities building



ARTISTIC IMPRESSION ONLY

TEMPE RESERVE AMENITIES

COVER PAGE - SCHEMATIC



EV Kerbside Charging Grant

- 3 EV kerbside charging partners - EVX, EVSE and PLUS ES
- Secured funding for 136 charging ports
- All chargers to be installed by April 2025 and open to the public 24 hours a day



Types of chargers

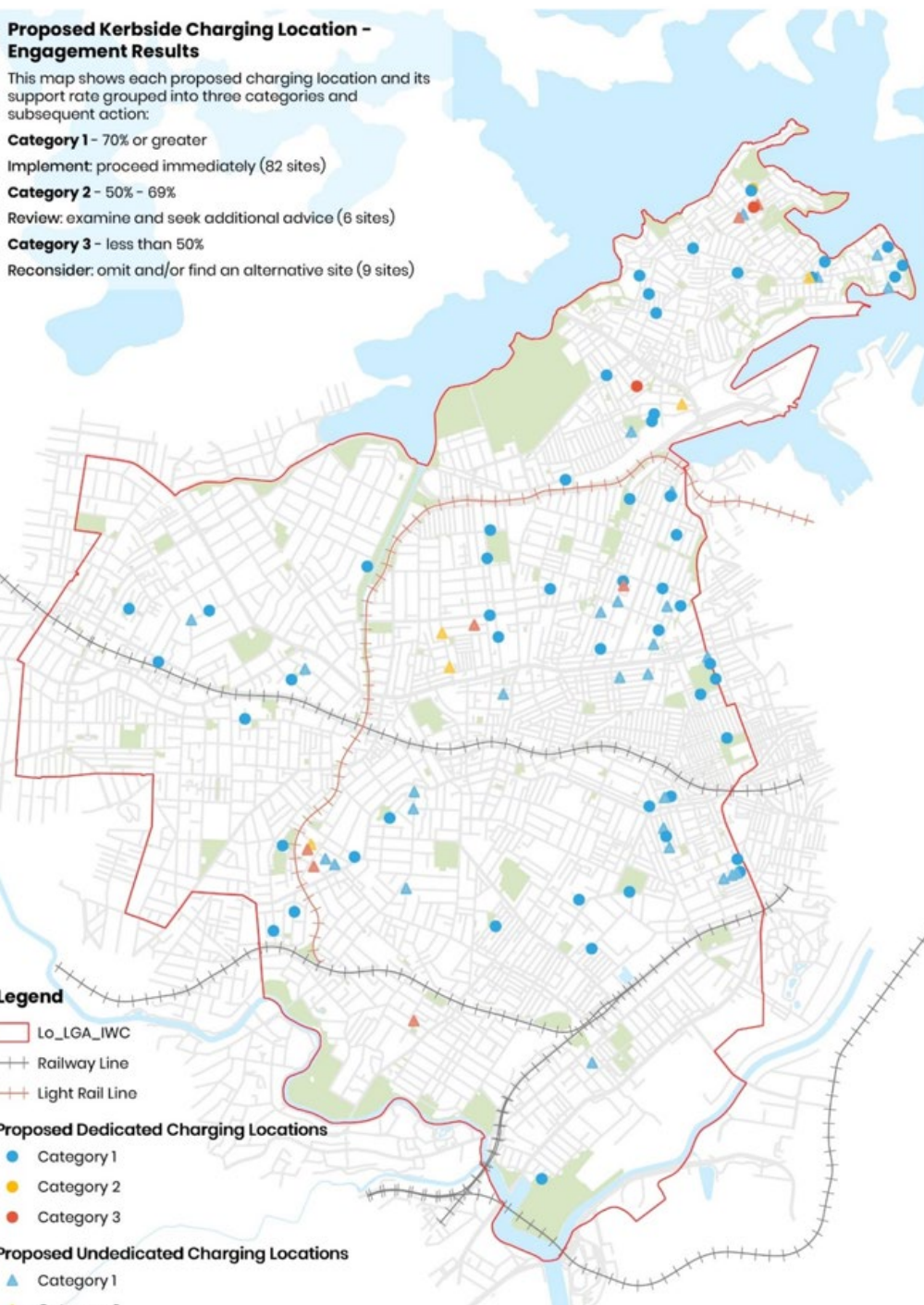
- 99 x 22kW chargers (134 charging ports)
- 1 x 60kW charger (2 charging ports)
- 93 dedicated charging bays and 41 non-dedicated bays
- All chargers are BYO cables except for 60kW charger that has CCS2 charger



Proposed Kerbside Charging Location - Engagement Results

This map shows each proposed charging location and its support rate grouped into three categories and subsequent action:

- Category 1** - 70% or greater
Implement: proceed immediately (82 sites)
- Category 2** - 50% - 69%
Review: examine and seek additional advice (6 sites)
- Category 3** - less than 50%
Reconsider: omit and/or find an alternative site (9 sites)



Charger location map

Playground upgrade Tom Kenny Reserve



New play equipment supplier: CRS



1

KLX-2001 - Fusion Play



2

KSW-004B - A Frame Nest Swing



3

NJA-16 - Spring Beam



4

NPT-08 - Balancing Trail



5

CCN-025 - Cross bridge



6

SNP-29 - Timber Steppers



Use of natural materials for nature play with the park



7

Custom timber deck steppers



Learn to ride track

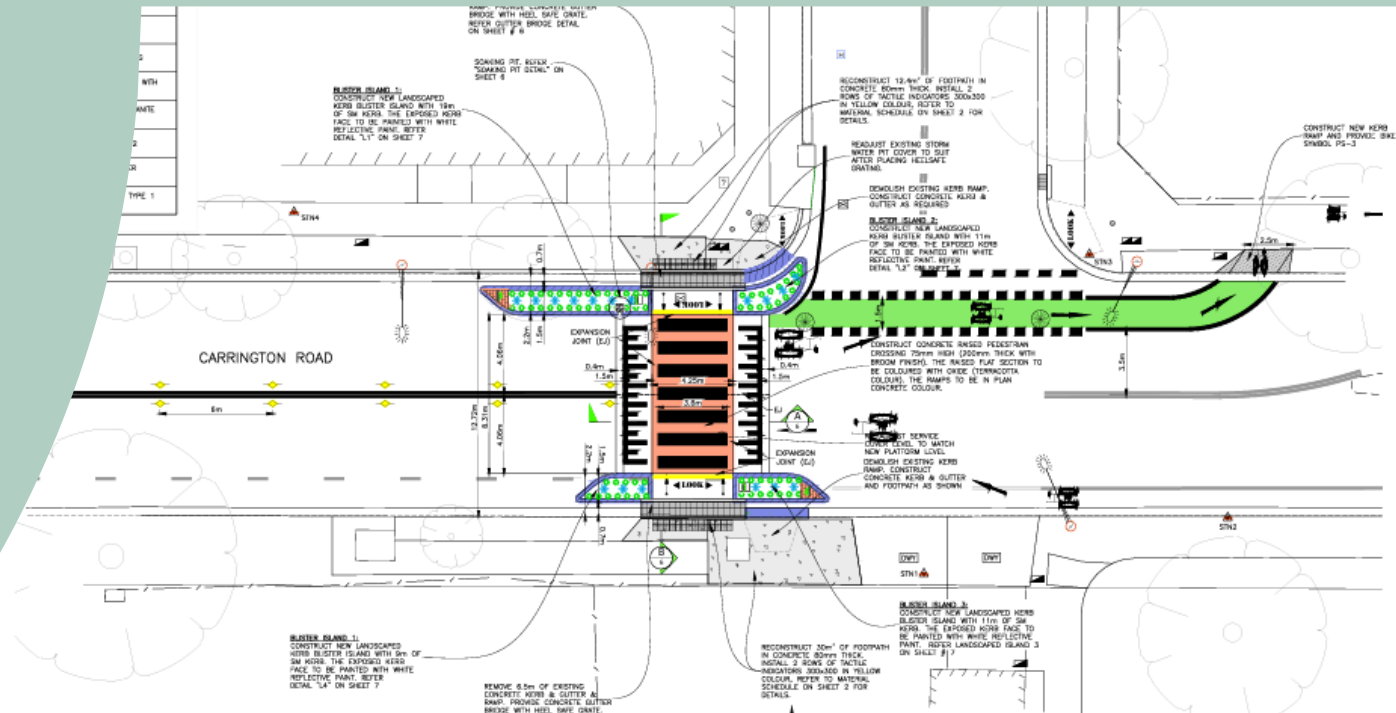
England Avenue, Marrickville - Raingarden

INNER WEST

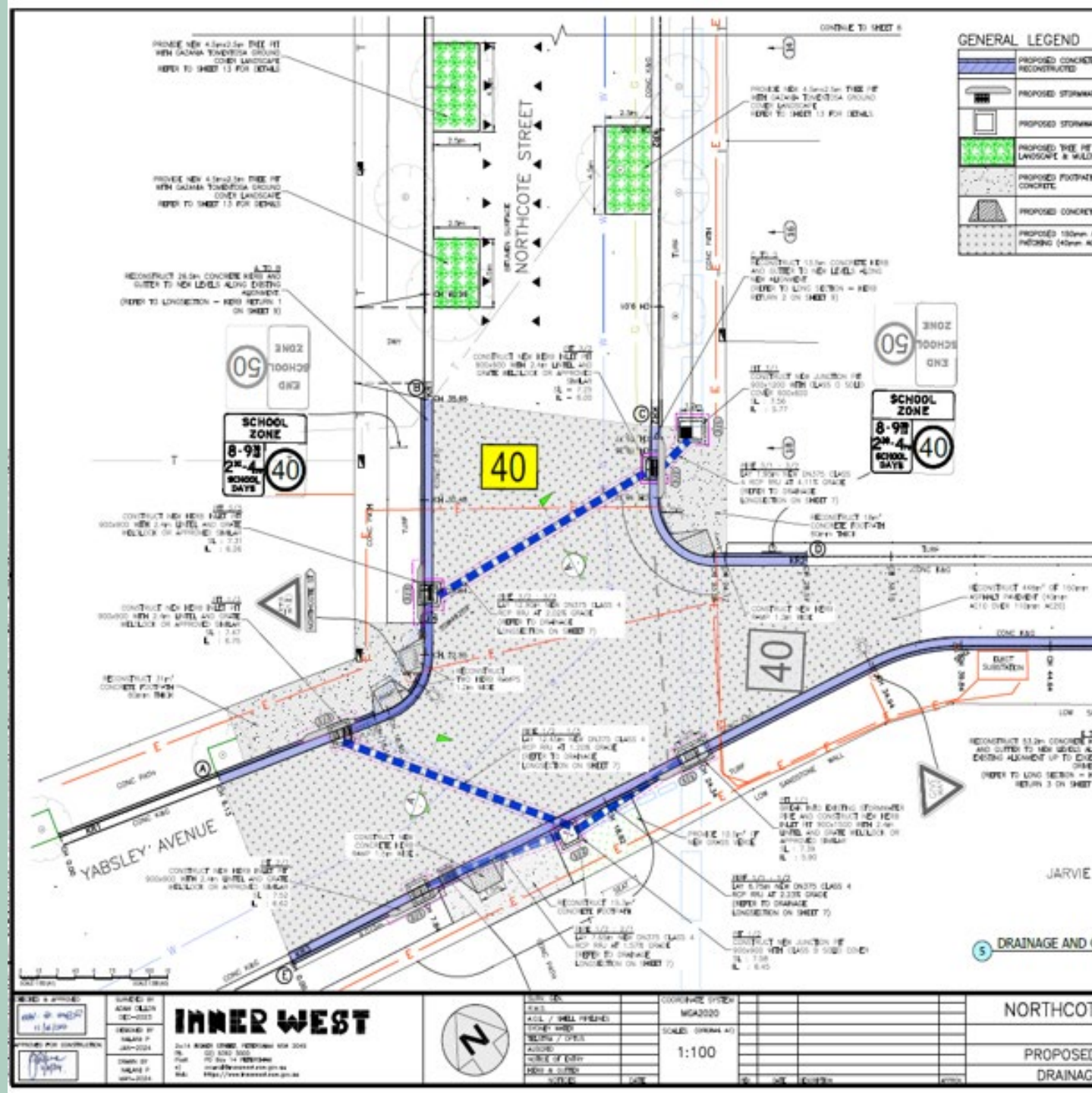


Raised Pedestrian Crossing at Carrington Road, Marrickville (at Cary Street)

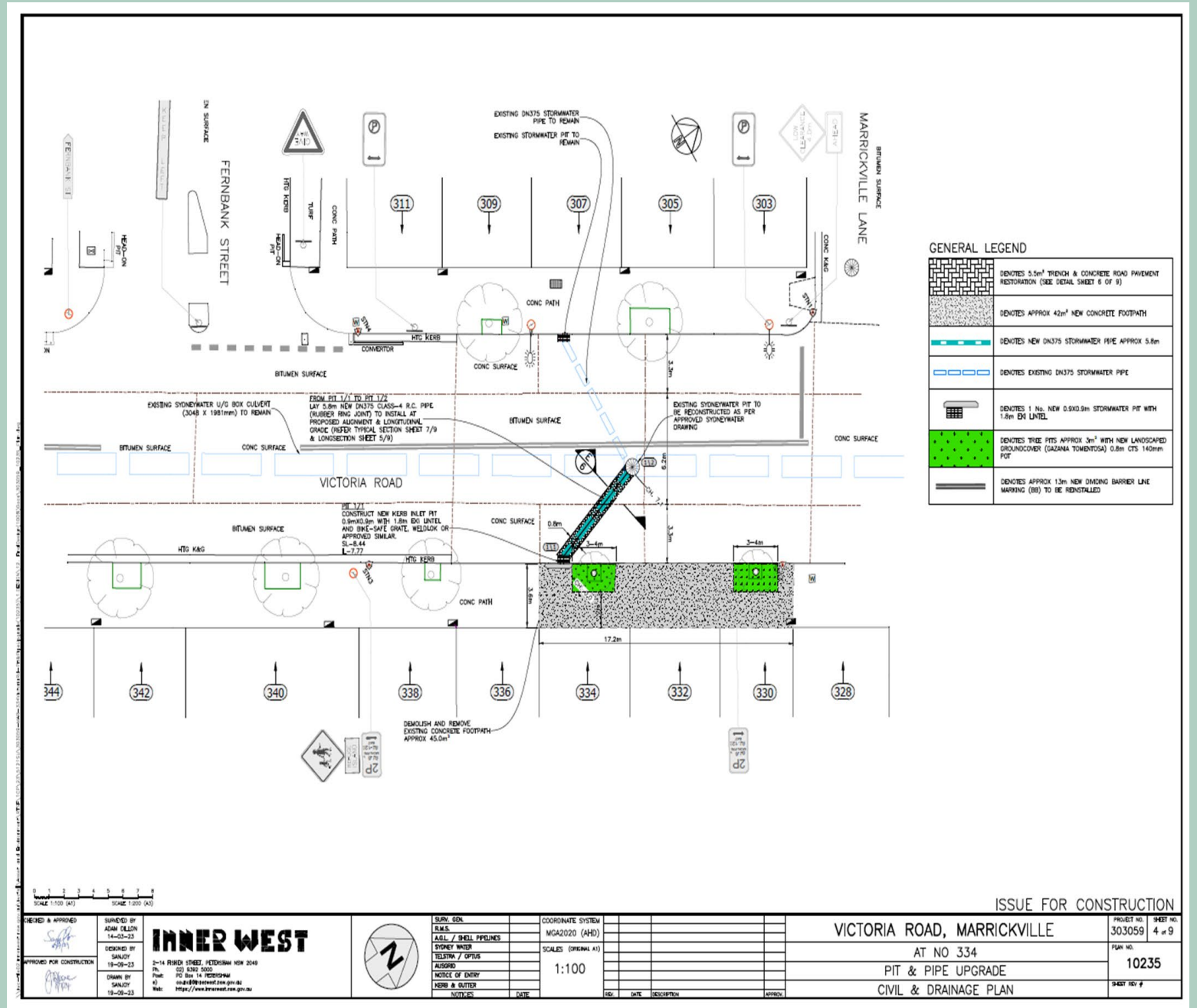
INNER WEST



Proposed Stormwater Renewal at Northcote Street (at Yabsley) Marrickville



Proposed Stormwater Upgrade at Victoria Road, Marrickville -



Sydenham to Bankstown train line closure

- The T3 line from Bankstown to Sydenham closed 30 September 2024
- Closure will be for 12 months to support the conversion to Metro Standards
- The final metro line will be known as the M1 Northwest & Bankstown Line, completing the 30km alignment between Bankstown and Tallawong via the City

INNER WEST



Sydenham to Bankstown train line closure

- Southwest Link bus services will replace trains in this period
- Southwest Link is free
- Frequency is 2-4 in peak and every 10-15min off-peak
- More information on Southwest Link bus services can be found here transportnsw.info/southwest-link

INNER WEST



Southwest Link
Train replacement buses



Sydenham to Bankstown train line closure

Council has worked with TfNSW to:

- Review the Temporary Transport Plan
- Provide temporary bus zones
- Support a review of temporary bus operations in Lower Railway Parade near Sydenham Station
- Implement Temporary Riding Routes
- Make improvements to the Tempe Station Car Park including bike parking and improved lighting and refreshed linemarking
- Implement the Interim East-West Pedestrian and Cyclist Link

Council has also resolved to undertake parking reviews around Tempe, St Peters and Sydenham stations.



Planning for Wicks Park



Purpose of the Plan of Management

A Plan of Management (PoM) is a legislative requirement under the Local Government Act. A PoM is principally concerned with the provision of high quality open spaces which are welcoming, accessible, and enjoyable areas for community use and interaction.

Wicks Park is highly valued by the community and community involvement in the development of this plan is essential. Parks are provided for community use and enjoyment. Park spaces need to be well designed and take account of community needs by responding to the local context.

Community Engagement

Community engagement on the development of a Draft PoM took place over July and August 2025. On site engagement was held on 17th August 2024 with a total of 40 residents and park users attending the workshop event. A total of 32 submissions have been received in relation to future park management and development.

A Draft Plan of Management for Wicks Park will be publicly exhibited in 2025 for further community input prior to being brought back to Council for consideration and adoption.



How to have your say

Join us at a drop-in engagement session

Wicks Park, Cnr Sydenham and Victoria Roads, Marrickville on: Saturday 17 August 2.00-3.30pm

Have your say online

Scan the QR code to visit the project page where you can find out more about the project and fill in an online form.



Or go to yoursay.innerwest.nsw.gov.au
Feedback closes on Sunday 25 August 2024.

Inner West Council is developing a new Plan of Management for Wicks Park

Wicks Park in Marrickville is a precious community space in the middle of a vibrant and growing neighbourhood.

It's important that we continue to protect and improve Wicks Park as a community space for gatherings, passive and active recreation for the people who live and work in Marrickville.

That's why Council is now planning for the park's next ten years and we are seeking your input.

Your feedback will guide the care and maintenance of this space now and into the future.

Darcy Byrne

Darcy Byrne,
Inner West
Mayor



Planning for Wicks Park



Marrickville Road Special Entertainment Precincts



Special entertainment precincts

- Enmore Road special entertainment precinct now in force:
 - Extra hour of trade for businesses
 - Footpath dining until 11pm
 - New sound management framework
 - Sound-proofing of new development required
 - Arts and live entertainment encouraged
- Six new precincts, including **Marrickville**, **Marrickville North (along Victoria Road)** and **Dulwich Hill** underway

INNER WEST

Enmore Road Special Entertainment Precinct

Share your thoughts
on creating a permanent
Enmore Special
Entertainment Precinct

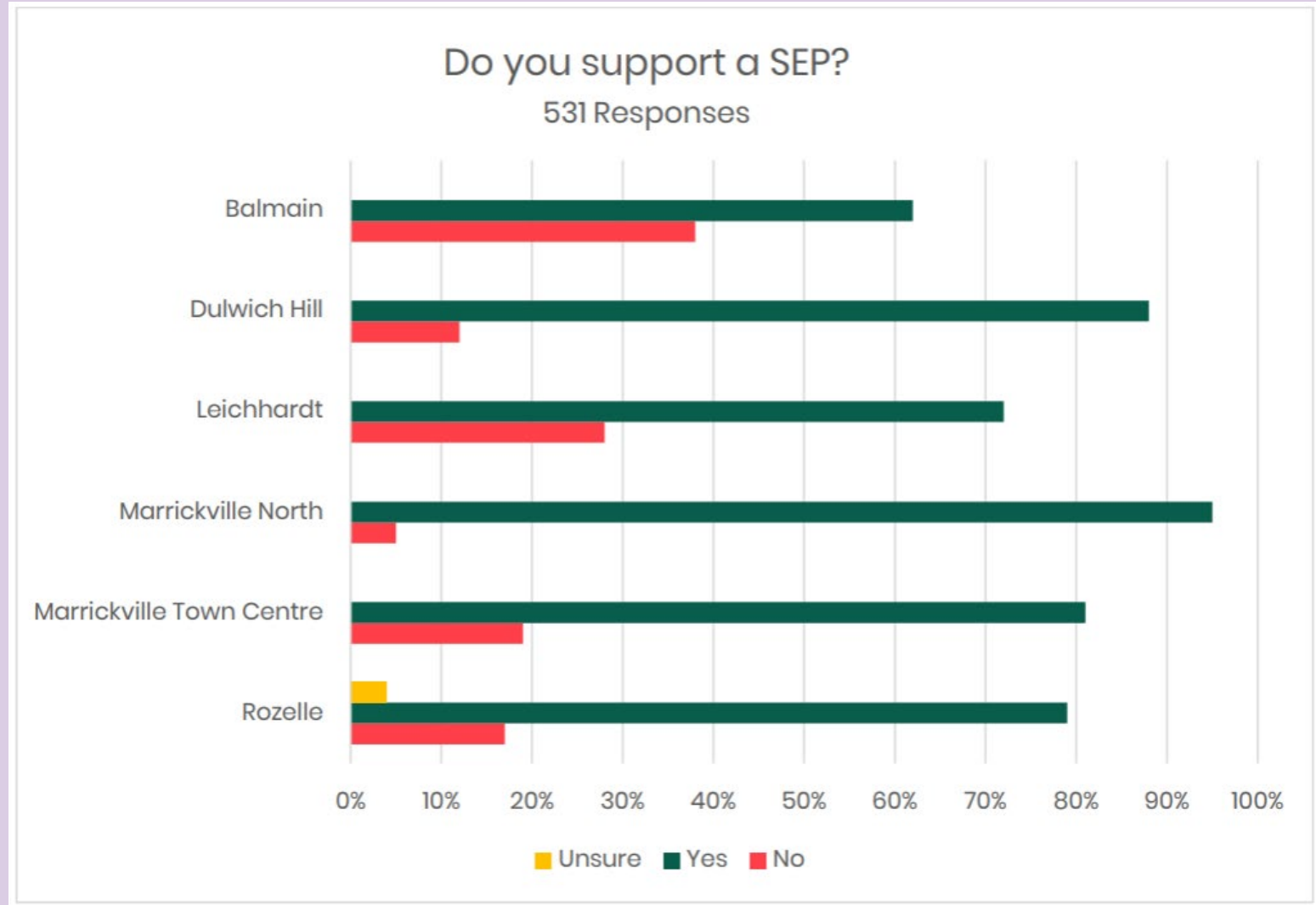


INNER WEST

yoursay.innerwest.nsw.gov.au

New precincts

- Initial Consultation ran from 7 March to 7 April
- Council report 25 June 2024
- State Govt support received
- Second round of consultation commencing early 2025



new precinct – Marrickville North



new precinct – Dulwich Hill



Upcoming consultation

- Next round of consultation will commence in early 2025
- Consultation will include:
 - face to face pop-ups
 - letters to affected residents, businesses and property owners
 - targeted engagement with businesses in each precinct
 - online survey
- Results will then be reported to Council

INNER WEST



Upcoming Forums

The dates for 2025 Local Matters Forums are being finalised.