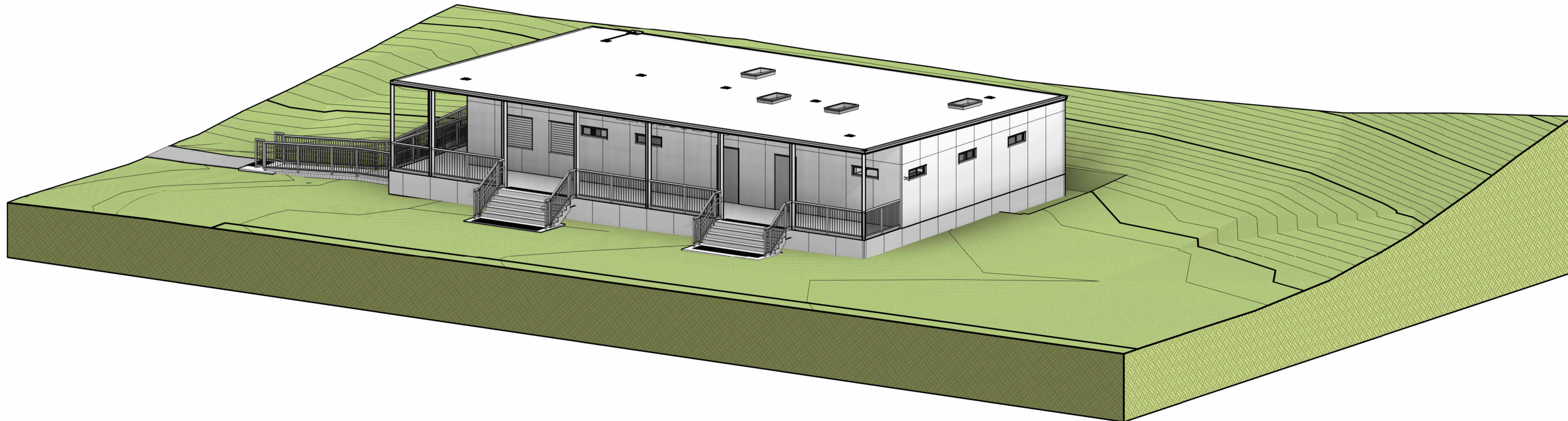


SHEET LIST					
SHEET NUMBER	SHEET NAME	CURRENT REVISION	CURRENT REVISION DATE	DESIGN DOCUMENTER	DESIGN PROJECT LEAD



ARTISTIC IMPRESSION ONLY

BUILDING INFORMATION						
BUILDING CLASS	WIND REGION	TERRAIN CATEGORY	IMPORTANCE LEVEL	CLIMATE ZONE	ATMOSPHERIC CORROSIVITY	BAL RATING
6/10a	A2	2	2	5	C3	BAL Low

REV	DESCRIPTION	DATE	BY	CHK
G	DESIGN DEVELOPMENT - ISSUED FOR BUILDING APPROVAL	06/06/24	OF	-
F	DESIGN DEVELOPMENT - ISSUED FOR CLIENT REVIEW/APPROVAL	15/05/24	KM	-
C	REVISED DESIGN	15/02/24	TT	MG

FLEETWOOD AUSTRALIA

2 Percival Rd, Smithfield NSW 2164 | (02) 8718 2500
This document and any of the documents' information, ideas and concepts are the property of Fleetwood Australasia and may not be used, copied or reproduced without express written permission. © Copyright Fleetwood Australasia. All rights reserved. ABN: 78 114 078 349

GENERAL NOTES

- ALL DIMENSIONS TO BE VERIFIED ON SITE PRIOR TO COMMENCEMENT OF WORKS.
- USE WRITTEN DIMENSIONS ONLY, DO NOT SCALE DRAWINGS.
- READ IN CONJUNCTION WITH OTHER DRAWINGS, SPECIFICATIONS & CONSULTANTS DOCUMENTATION.
- REFER ANY DISCREPANCIES IMMEDIATELY TO THE DESIGNER & AWAIT WRITTEN INSTRUCTION.

PROJECT NO.: J005017
 PROJECT STATUS: DESIGN DEVELOPMENT
 PROJECT CLIENT: INNER WEST COUNCIL

PROJECT: LEICHHARDT OVAL NO. 2 AMENITIES
 PROJECT ADDRESS: 2 GLOVER AVENUE, LEICHHARDT NSW 2040

SHEET COVER PAGE

DESIGN DOCUMENTER: KM
 DESIGN LEAD: MG

DRAWING NO.: **A000**

SCALE: **1:100**
 SIZE: **A2**
 REVISION: **G**



1 030 SITE
A300 1:500

NOTE: WHERE SITE PLANS INCLUDE SATELLITE IMAGERY - THIS IS DONE FOR EARLY PLANNING ONLY. SATELLITE IMAGERY CANNOT BE RELIED ON FOR SCALE, OR EVEN AS A TRUE REFLECTION OF CURRENT SITE CONDITIONS

REV	DESCRIPTION	DATE	BY	CHK
H	INCORPORATED COMMENTS/ISSUED FOR APPROVAL	17/06/24	***	***
G	DESIGN DEVELOPMENT - ISSUED FOR BUILDING APPROVAL	06/06/24	OF	-
F	DESIGN DEVELOPMENT - ISSUED FOR CLIENT REVIEW/APPROVAL	15/05/24	KM	-

FLEETWOOD AUSTRALIA

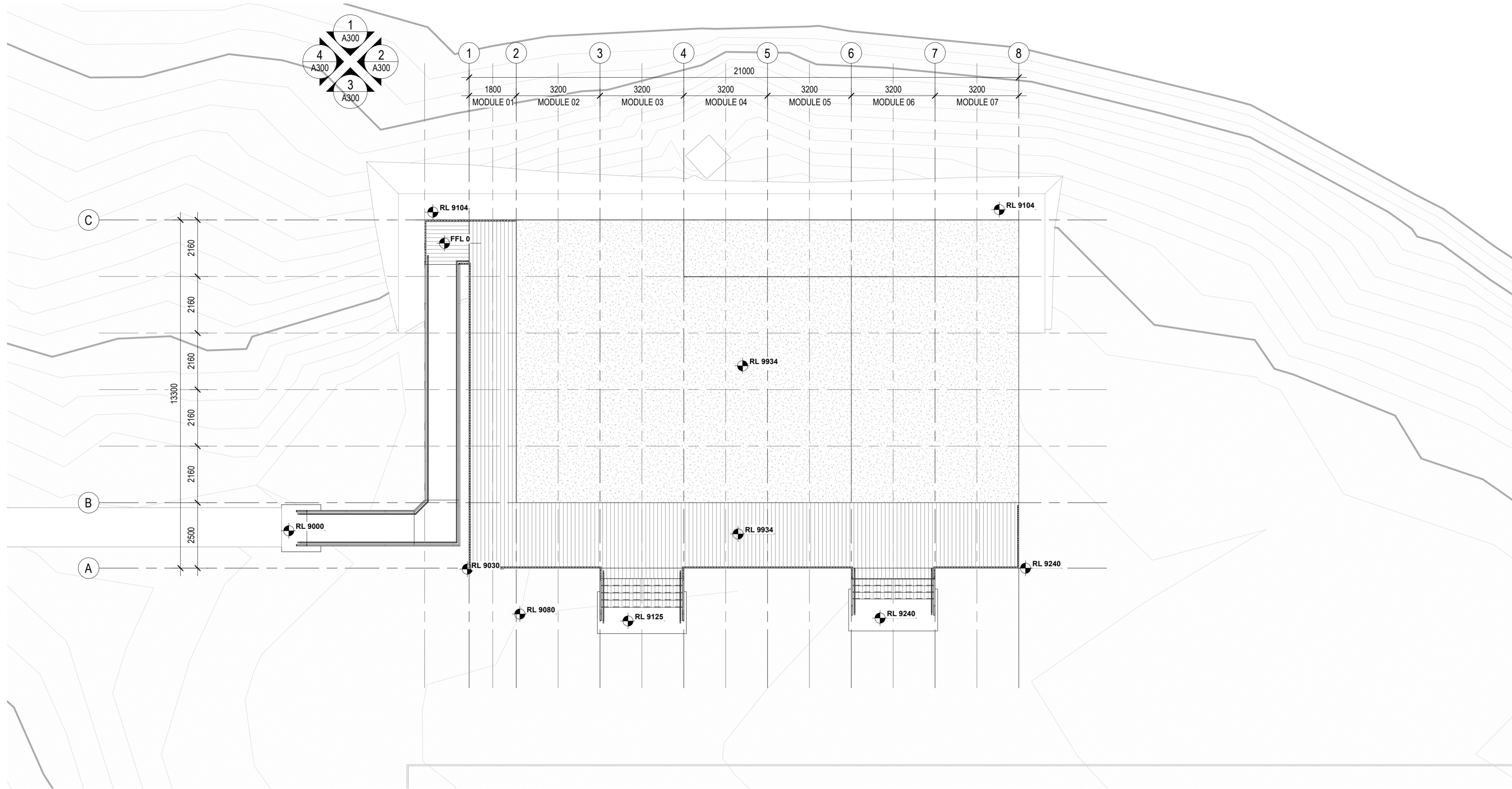
2 Percival Rd, Smithfield NSW 2164 | (02) 8718 2500
This document and any of the documents information, ideas and concepts are the property of Fleetwood Australia and may not be used, copied or reproduced without express written permission. © Copyright Fleetwood Australia. All rights reserved. ADRN: 78 114 078 249
GENERAL NOTES
 1. ALL DIMENSIONS TO BE VERIFIED ON SITE PRIOR TO COMMENCEMENT OF WORKS.
 2. USE WRITTEN DIMENSIONS ONLY, DO NOT SCALE DRAWINGS.
 3. READ IN CONJUNCTION WITH OTHER DRAWINGS, SPECIFICATIONS & CONSULTANTS DOCUMENTATION.
 4. REFER ANY DISCREPANCIES IMMEDIATELY TO THE DESIGNER & AWAIT WRITTEN INSTRUCTION.

PROJECT NO.: J005017
 PROJECT STATUS: DESIGN DEVELOPMENT
 PROJECT CLIENT: INNER WEST COUNCIL

PROJECT: LEICHHARDT OVAL NO. 2 AMENITIES
 PROJECT ADDRESS: 2 GLOVER AVENUE, LEICHHARDT NSW 2040

SHEET LOCALITY AND SITE CONTEXT PLAN

DESIGN DOCUMENTER	DESIGN LEAD	SCALE	SIZE
KM	MG	1:500	A2
DRAWING NO.	REVISION		
A100	H		



NOTE:

- FINISHES AND MATERIALS INDICATIVE ONLY;
- TO BE CONFIRMED PRIOR TO CONSTRUCTION SUBJECT TO SECTION-J AND BCA COMPLIANCE

REV	DESCRIPTION	DATE	BY	CHK
H	INCORPORATED COMMENTS/ISSUED FOR APPROVAL	17/06/24	***	***
G	DESIGN DEVELOPMENT - ISSUED FOR BUILDING APPROVAL	06/06/24	OF	-
F	DESIGN DEVELOPMENT - ISSUED FOR CLIENT REVIEW/APPROVAL	15/05/24	KM	-

FLEETWOOD AUSTRALIA

2 Percival Rd, Smithfield NSW 2164 | (02) 8718 2500
This document and any of the documents information, ideas and concepts are the property of Fleetwood Australasia and may not be used, copied or reproduced without express written permission. © Copyright Fleetwood Australasia. All rights reserved. ADRN: 78 114 078 349

GENERAL NOTES

1. ALL DIMENSIONS TO BE VERIFIED ON SITE PRIOR TO COMMENCEMENT OF WORKS.
2. USE WRITTEN DIMENSIONS ONLY, DO NOT SCALE DRAWINGS.
3. READ IN CONJUNCTION WITH OTHER DRAWINGS, SPECIFICATIONS & CONSULTANTS DOCUMENTATION.
4. REFER ANY DISCREPANCIES IMMEDIATELY TO THE DESIGNER & AWAIT WRITTEN INSTRUCTION.

PROJECT NO.: J005017
 PROJECT STATUS: DESIGN DEVELOPMENT
 PROJECT CLIENT: INNER WEST COUNCIL

PROJECT: LEICHHARDT OVAL NO. 2 AMENITIES
 PROJECT ADDRESS: 2 GLOVER AVENUE, LEICHHARDT NSW 2040

SHEET: SITE SET OUT PLAN - PROPOSED

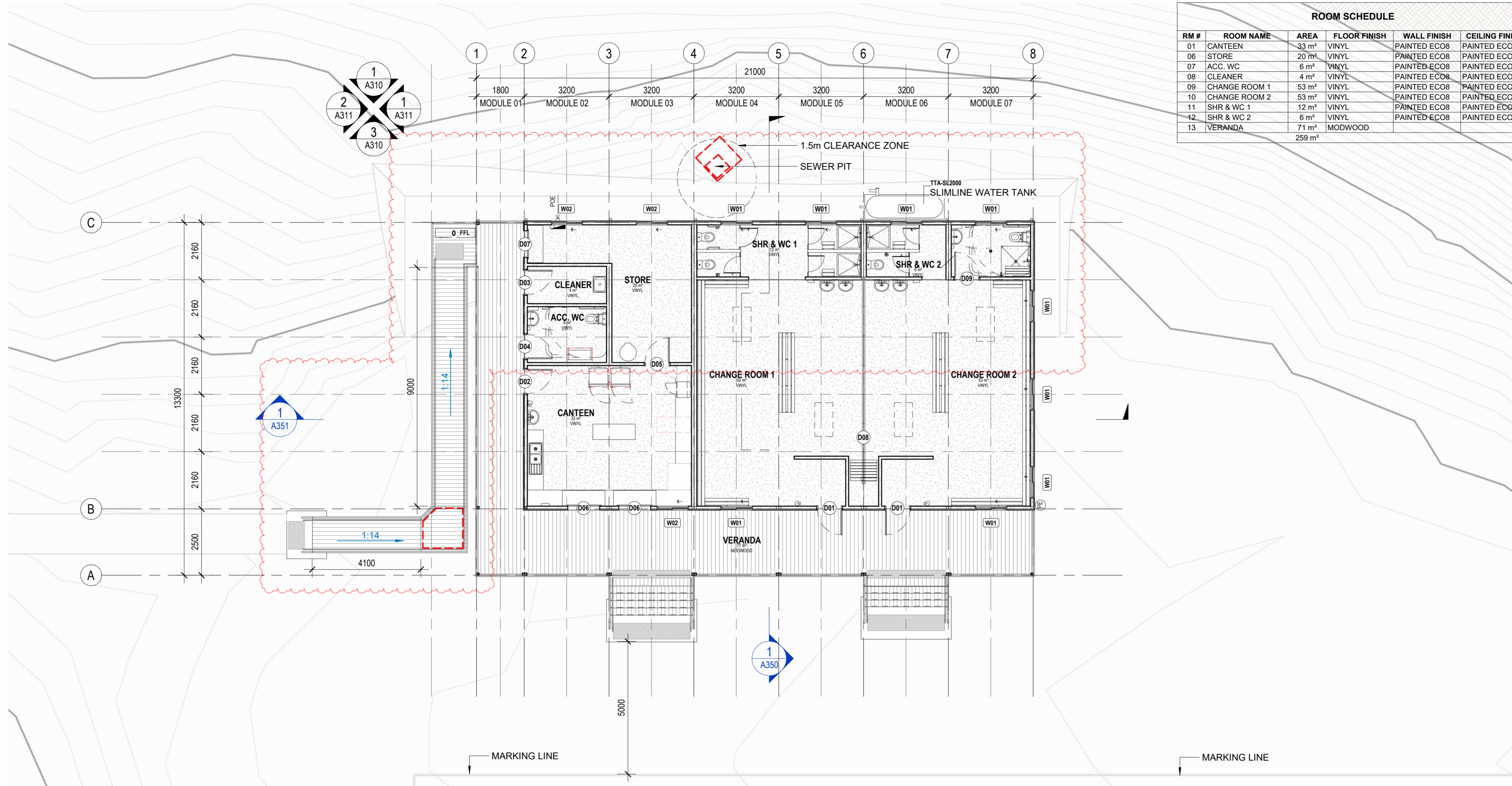
DESIGN DOCUMENTER: KM
 DESIGN LEAD: MG
 SCALE: 1:100
 SIZE: A2
 REVISION: H

A150

NORTH

ROOM SCHEDULE

RM #	ROOM NAME	AREA	FLOOR FINISH	WALL FINISH	CEILING FINISH
01	CANTEEN	33 m ²	VINYL	PAINTED ECO8	PAINTED ECO8
06	STORE	20 m ²	VINYL	PAINTED ECO8	PAINTED ECO8
07	ACC. WC	6 m ²	VINYL	PAINTED ECO8	PAINTED ECO8
08	CLEANER	4 m ²	VINYL	PAINTED ECO8	PAINTED ECO8
09	CHANGE ROOM 1	53 m ²	VINYL	PAINTED ECO8	PAINTED ECO8
10	CHANGE ROOM 2	53 m ²	VINYL	PAINTED ECO8	PAINTED ECO8
11	SHR & WC 1	12 m ²	VINYL	PAINTED ECO8	PAINTED ECO8
12	SHR & WC 2	6 m ²	VINYL	PAINTED ECO8	PAINTED ECO8
13	VERANDA	71 m ²	MODWOOD	PAINTED ECO8	PAINTED ECO8
		259 m ²			



DOORS SCHEDULE

TYPE	QTY	WIDTH	HEIGHT	DOOR TYPE	FRAME TYPE	FRAME COLOUR	PANEL TYPE	PANEL COLOUR	HARDWARE	LOCKSET	COMMENTS
D01	2	920	2040	HINGED SWING	METAL	POWDERCOATED - DOVER WHITE	TIMBER, SOLIDCORE	SHALE GREY	KL17D60SC - LOCKWOOD CLASSROOM FUNCTION LEVERSET	7107SSS - LOCKWOOD DOUBLE CYLINDER DEADBOLT	DOOR CLOSER, DOORSTOP, DOOR SEALS, VANDAL PROOF COVERS, ELECTRONIC SWIPE ACCESS
D02	1	920	2040	HINGED SWING	METAL	POWDERCOATED - DOVER WHITE	TIMBER, SOLIDCORE, HALF GLASS	SHALE GREY	KL17D60SC - LOCKWOOD CLASSROOM FUNCTION LEVERSET	7107SSS - LOCKWOOD DOUBLE CYLINDER DEADBOLT	DOOR CLOSER, DOORSTOP, DOOR SEALS, VANDAL PROOF COVERS, ELECTRONIC SWIPE ACCESS
D03	1	920	2040	HINGED SWING	METAL	POWDERCOATED - DOVER WHITE	TIMBER, SOLIDCORE	SHALE GREY	KL17D60SC - LOCKWOOD CLASSROOM FUNCTION LEVERSET	7107SSS - LOCKWOOD DOUBLE CYLINDER DEADBOLT	DOOR CLOSER, DOORSTOP, DOOR SEALS, VANDAL PROOF COVERS, ELECTRONIC SWIPE ACCESS
D04	1	920	2040	HINGED SWING	METAL	POWDERCOATED - DOVER WHITE	METAL CLAD, SOLIDCORE	TBC	KL17D60SC - LOCKWOOD CLASSROOM FUNCTION LEVERSET	7107SSS - LOCKWOOD DOUBLE CYLINDER DEADBOLT & 1368 / 9PSC-KIT LOCKWOOD PRIVACY INDICATOR BOLT KIT	VACANT ENGAGED LATCH, DOORSTOP, DELAYED CLOSER, LIFT OFF HINGES, UNISEX ACCESSIBLE TOILET
D05	1	920	2040	HINGED SWING	METAL	POWDERCOATED - DOVER WHITE	TIMBER, SOLIDCORE	TBC	KL17D40SC - LOCKWOOD CLASSROOM DOUBLE CYLINDER	PASSAGE SET	DOOR CLOSER AND DOOR STOP
D06	2	1200	1200	ROLLER DOOR			TO MANUFACTURER'S SPEC	TBC	TO MANUFACTURERS SPECIFICATIONS	44143000 AND ADISL5B012 (EXTENDED BOLT)- ADI SLIMLINE LOCKABLE BOLTS	ROLLER DOOR 1200Wx 1200H; STRUCTURAL OPENING SIZE NOMINATED IN HEIGHT x WIDTH, DOOR SIZE TBC BY MANUFACTURER
D07	1	1000	2100	ROLLER DOOR			TO MANUFACTURER'S SPEC	TBC	TO MANUFACTURERS SPECIFICATIONS	44143000 AND ADISL5B012 (EXTENDED BOLT)- ADI SLIMLINE LOCKABLE BOLTS	ROLLER DOOR 1000Wx 2100H; STRUCTURAL OPENING SIZE NOMINATED IN HEIGHT x WIDTH, DOOR SIZE TBC BY MANUFACTURER
D08	1	5800	2500	OPERABLE WALL			STANDARD VINYL		TO MANUFACTURERS SPECIFICATIONS		ACOUSTIC CENTRE STACK OPERABLE WALL; STRUCTURAL OPENING SIZE NOMINATED IN HEIGHT x WIDTH, DOOR SIZE TBC BY MANUFACTURER
D09	1	920	2040	HINGED SWING	METAL	POWDERCOATED - DOVER WHITE	TIMBER, SOLIDCORE	TBC		7107SSS - LOCKWOOD DOUBLE CYLINDER DEADBOLT & 1368 / 9PSC-KIT LOCKWOOD PRIVACY INDICATOR BOLT KIT	VACANT ENGAGED LATCH, DOORSTOP, DELAYED CLOSER, LIFT OFF HINGES, UNISEX ACCESSIBLE TOILET AND SHOWER

WINDOW SCHEDULE

TYPE	QTY	WIDTH	HEIGHT	HEAD HEIGHT	WINDOW TYPE	FRAME TYPE	FRAME COLOUR	GLAZING	COMMENTS
W01	9	1180	380	2100	FACE FIXED EXTERNAL SLIDING WINDOW	ALUMINIUM	POWDERCOATED - DOVER WHITE - TBC	4mm OBSCURE GLASS - TBC	SUBJECT TO SECTION-J ASSESSMENT
W02	3	1180	380	2100	FACE FIXED EXTERNAL SLIDING WINDOW	ALUMINIUM	POWDERCOATED - DOVER WHITE - TBC	4mm CLEAR GLASS - TBC	SUBJECT TO SECTION-J ASSESSMENT
W03	4	689	1299		FIXED SKYLIGHT - VELUX FCM 2246	ALUMINIUM	POWDERCOATED - DOVER WHITE - TBC	3mmLOW-E/9mmARGON/5.36mmCLEAR LAMINATED GLASS (U-VALUE =2.9, SHGC =0.2 (TBC)	SUBJECT TO SECTION-J ASSESSMENT

NOTE:
 • FINISHES AND MATERIALS INDICATIVE ONLY;
 • TO BE CONFIRMED PRIOR TO CONSTRUCTION
 SUBJECT TO SECTION-J AND BCA COMPLIANCE

FLEETWOOD AUSTRALIA

2 Percival Rd, Smithfield NSW 2164 | (02) 8718 2500
This document and any of the documents information, ideas and concepts are the property of Fleetwood Australia and may not be used, copied or reproduced without express written permission. © Copyright Fleetwood Australia. All rights reserved. ADR: 78 114 078 349

REV	DESCRIPTION	DATE	BY	CHK
H	INCORPORATED COMMENTS/ISSUED FOR APPROVAL	17/06/24	***	***
G	DESIGN DEVELOPMENT - ISSUED FOR BUILDING APPROVAL	06/06/24	OF	-
F	DESIGN DEVELOPMENT - ISSUED FOR CLIENT REVIEW/APPROVAL	15/05/24	KM	-
E	DESIGN DEVELOPMENT - ISSUED FOR REVIEW	06/05/24	KM	-

GENERAL NOTES
 1. ALL DIMENSIONS TO BE VERIFIED ON SITE PRIOR TO COMMENCEMENT OF WORKS.
 2. USE WRITTEN DIMENSIONS ONLY, DO NOT SCALE DRAWINGS.
 3. READ IN CONJUNCTION WITH OTHER DRAWINGS, SPECIFICATIONS & CONSULTANTS DOCUMENTATION.
 4. REFER ANY DISCREPANCIES IMMEDIATELY TO THE DESIGNER & AWAIT WRITTEN INSTRUCTION.

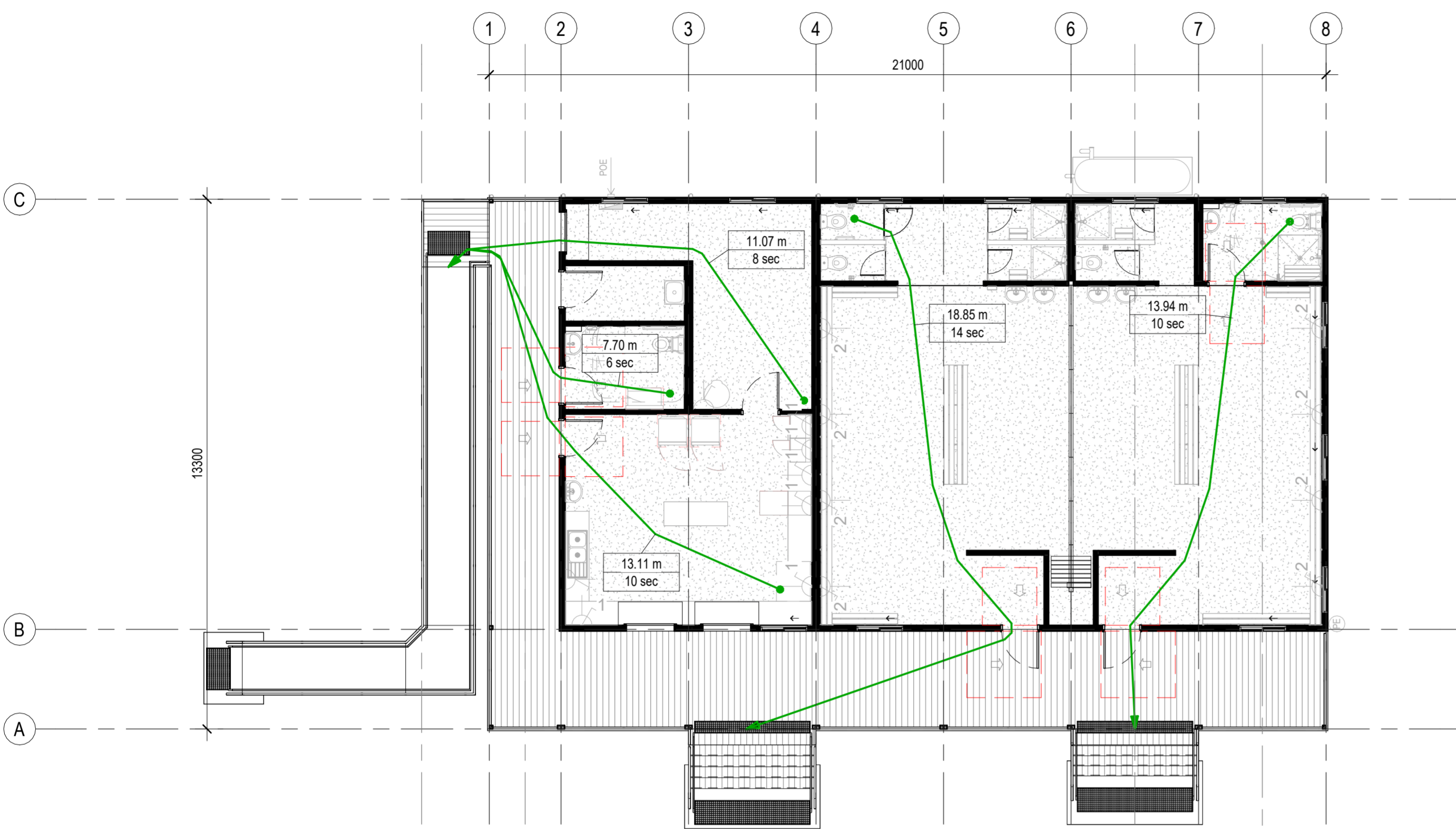
PROJECT NO.: J005017
 PROJECT STATUS: DESIGN DEVELOPMENT
 PROJECT CLIENT: INNER WEST COUNCIL

PROJECT: LEICHHARDT OVAL NO. 2 AMENITIES
 PROJECT ADDRESS: 2 GLOVER AVENUE, LEICHHARDT NSW 2040

SHEET: GENERAL ARRANGEMENT PLAN - GROUND FLOOR

DESIGN DOCUMENTER: KM
 DESIGN LEAD: MG
 SCALE: 1:100
 SIZE: A2
 REVISION: H
 DRAWING NO.: A200

NCC CLAUSE	ACCESS/EGRESS NOTES
D3D8	REQUIRED EXITS SHALL NOT: - OPENING TO DUCT OR CHUTE THAT CONVEYS HOT PRODUCTS OF COMBUSTION (EG FIREPLACE, BOILER ETC) - GAS OR OTHER FUEL SERVICES - ELECTRICITY METERS, DISTRIBUTION BOARDS, CENTRAL COMMS EQUIPMENT, ELECTRIC MOTORS UNLESS THEY ARE PART OF A FIRE-FIGHTING OR DETECTION SYSTEM. ANY SUCH ENCLOSURE MUST BE OF NON-COMBUSTIBLE CONSTRUCTION OR HAVE A FIRE-PROTECTIVE COVERING
D3D9	SPACE BELOW A NON FIRE ISOLATED STAIR OR RAMP MUST NOT BE ENCLOSED FOR STORAGE UNLESS THE ENCLOSING WALL AND CEILING HAS A FRL OF 60/60/60 AND ACCESS DOOR IS SELF-CLOSING WITH ~60/30 FIRE DOOR
D3D11	A RAMP SERVING AS A REQUIRED EXIT MUST BE BUILT IN ACCORDANCE WITH AS 1428.1 THE SURFACE OF A RAMP MUST HAVE A SLIP RESISTANCE OF: - RAMP STEEPER THAN 1:14 - DRY (P4 OR R11) / WET (P5 OR R12) - RAMP STEEPER THAN 1:20 BUT NOT STEEPER THAN 1:14 - DRY (P3 OR R10) / WET (P4 OR R11)
D3D14	A STAIRWAY MUST HAVE: - NO MORE THAN 18 AND NOT LESS THAN 2 RISERS IN EACH FLIGHT - GOING, RISER AND QUANTITY IN ACCORDANCE WITH D3D14 - CONSTANT GOINGS AND RISERS THROUGH OUT EACH FLIGHT - TREADS OR LANDING SURFACE SLIP RESISTANCE - DRY (P3 OR R10) / WET (P4 OR R11) - NOSING OR LANDING EDGE STRIP WITH SLIP RESISTANCE OF: - DRY (P3) / WET (P4) - TREAD MUST BE OF SOLID CONSTRUCTION IF >10m IN HEIGHT OR CONNECTS >3 STOREYS - CLASS 9b NO MORE THAN 36 RISERS IN CONSECUTIVE FLIGHTS WITHOUT A CHANGE IN DIRECTION OF AT LEAST 30° - IF AN OPEN RISER IS USED - A SPHERE NO LARGER THAN 125mm SHOULD BE ABLE TO PASS THROUGH THE SPACE BETWEEN TREADS
D3D15	LANDINGS WILL HAVE A MAX. GRADIENT OF 1:50 AND A MINIMUM LENGTH OF 750mm, AND HAVE EITHER: - A LANDING SURFACE THAT HAS A SLIP-RESISTANCE CLASSIFICATION: DRY (P3 OR R10) / WET (P4 OR R11); OR - A LANDING EDGE STRIP WHICH IS: DRY (P3) / WET (P4)
D3D16	NO STEP OR RAMP SHALL BE INCORPORATED INTO A DOOR CLOSER THAN THE WIDTH OF THE DOOR LEAF TO AVOID TRIPS/FALLS
D3D17	CONTINUOUS BARRIERS MUST BE PROVIDED TO STAIRS, RAMPS, WALKWAYS, DECKS AND TRAFFICABLE ROOFS, WHERE THE SURFACE IS >1m FROM GROUND LEVEL.
D3D18	BARRIERS REQUIRED BY D3D17 SHALL BE A MINIMUM 865mm FOR STAIRWAYS /RAMPS STEEPER THAN 1:20 OR 1000mm EVERYWHERE ELSE
D3D19	OPENINGS IN BARRIERS REQUIRED BY D3D17 SHALL NOT ALLOW MORE THAN A 125mm SPHERE TO PASS THROUGH
D3D22	HANDRAILS SHALL: - BE LOCATED ON A MINIMUM ONE SIDE (UNLESS THE STAIRS/RAMPS WIDER THAN 2m OR REQUIRED BY AS 1428.1) - CLASS 9b SCHOOLS OR EARLY CHILDCARE CENTRES MUST HAVE - IN ADDITION TO TOP-RAIL AT MIN. 865mm HIGH - AN INTERNAL HANDRAIL WITH TOP FIXED BETWEEN 665mm AND 750mm FOR A PRIMARY SCHOOL AND/OR BETWEEN 450mm - 750mm FOR AN EARLY CHILDCARE CENTRE. - HANDRAILS MUST BE CONTINUOUS THROUGH FLIGHTS (INC. LANDINGS) - ALL HANDRAILS HEIGHTS SHALL BE MEASURED FROM FROM STAIR NOSINGS OF TREADS AND FLOOR SURFACE OF RAMP.
D3D25	A SWINGING DOOR MUST: - NOT ENCROACH IN ANY PART OF ITS SWING BY MORE THAN 500mm OF THE REQUIRED WIDTH OF A PATH OF TRAVEL REQUIRED FOR BUILDING EGRESS OR BY MORE THAN 100mm OF THE REQUIRE WIDTH OF A PATH OF TRAVEL (MEASUREMENT INCLUDES DOOR FURNITURE) - MUST SWING IN DIRECTION OF EGRESS, UNLESS SERVING A COMPARTMENT <200m² OR IT IS THE ONLY REQUIRED EXIT AND IT IS FITTED WITH A HOLD OPEN DEVICE OR IT SERVES A SANITARY COMPARTMENT OR AIRLOCK; AND - IT MUST NOT IMPEDE THE PARTH OR DIRECTION OF EGRESS.
D3D26	DOOR LATCHES FOR DOORS IN REQUIRED EXITS MUST BE READILY OPENABLE WITHOUT A KEY FROM THE SIDE OF EGRESS BY EITHER: - A SINGLE DOWNWARD HAND ACTION OR BY A PUSH ON A DEVICE LOACATED BETWEEN 900-1100mm FROM FFL AND COMPLY DIMENSIONALLY WITH AS 1428.1 - WHERE A MANUAL CONTROL LOCATED FOR POWER ACTIVATED DOORS IT MUST BE LOCATED >500mm FROM AN INTERNAL CORNER. IF OPERATING A HINGED DOOR THE CONTROL MUST BE BETWEEN 1.2m FROM THE DOOR LEAF. FOR A SLIDING DOOR IT MUST BE WITHIN 2M OF THE DOOR AND CLEAR OF SURFACE MOUNTED DOOR. IN OPEN POSITION, THE CONTROL MUST BE A MINIMUM 25mm WIDE AND BE PROUD OF THE SURROUNDING SURFACE. BRAILLE/TACTILE SIGNAGE MUST IDENTIFY THE LATCH OPERATION DEVICE.
D3D28	ANY DOOR WHICH IS: A REQUIRED FIRE DOOR PROVIDING ACCESS TO A REQUIRED EXIT (EXCEPT IN CLASS 2/3), A SMOKE DOOR, A FIRE DORR THAT IS PART OF A HORIZONTAL EXIT, A SMOKE DOOR THAT SWINGS IN BOTH DIRECTIONS AND A DOOR LEADING FROM A FIRE-ISOLATED EXIT TO OPEN SPACE OR ROAD, MUST BE FITTED WITH SIGNAGE ALERTING USERS NOT TO IMPARI DOOR (EG FIRE SAFETY DOOR - DO NOT OBSTRUCT)
D4D2	CLASS 1b, 2, 3, 5, 6, 7, 8, 9 AND PUBLIC CLASS 10 (SANITARY FACILITIES) ARE REQUIRED TO MEET MINIMUM ACCESS STANDARDS UNDER PART D4 OF NCC VOL. 1 AND AS 1428.1
D4D3 (1)	ACCESSWAYS MUST BE PROVIDED FROM THE MAIN POINTS OF PEDESTRIAN ENTRY OF SITE, FROM OTHER ACCESSIBLE BUILDINGS AND FROM ACCESSIBLE PARKING SPACES ON THE ALOTMENT
D4D3 (2)	IN ADDITION TO THE PRINCIPLE ENTRY BEING ACCESSIBLE - NO LESS THEN 50% OF ALL PEDESTRIAN ENTRANCES MUST BE ACCESSIBLE. IN A BUILDING OVER 500m² A NON-ACCESSIBLE ENTRY MUST NOT BE MORE THAN 50m AWAY FROM AN ACCESSIBLE ENTRY
D4D4	ACCESSIBILITY APPLIES TO: - ALL RAMPS AND STAIRS (RAMPS - CLAUSE 10 OF AS 1428.1, STAIRS - CLAUSE 11 OF AS 1428.1) - LIFTS (PART E3 OF NCC VOL. 1) - ACCESS PATHWAYS MUST ACCOUNT FOR PASSING AND TURNING SPACES AT MAX. 20m INTERVALS AND IN ACCORD WITH AS 1428.1
D4D5	EXEMPTIONS FROM ACCESSIBILITY APPLY WHERE USE CASE IS INAPPROPRIATE OR LEADS TO A WHS RISK TO PERSONS WITH A DISABILITY
D4D6	ACCESSIBLE PARKING IS REQUIRED TO ACCESS A BUILDING WHICH IS ACCESSIBLE AND MUST COMPLY WITH AS 2890.6
D4D7	BRAILLE AND TACTILE SIGNAGE CONFORMING TO SPECIFICATION 15 MUST: - INCORPORATE INTERNATIONAL SYMBOLS OF ACCESS OR DEAFNESS (AS APPROPRIATE) AND IDENTIFY: - EACH SANITARY FACILITY (EXCEPT IN PWD COMPLIANT UNITS OF A CLASS 1b/3/9c BUILDING) - EACH SPACE WITH A HEARING AUGMENTATION SYSTEM - IDENTIFY EACH REQUIRED EXIT DOOR WITH "EXIT" "LEVEL" AND FLOOR LEVEL MUNMBER OF FLOOR DESCRIPTOR - WHERE SIGNAGE FOR HEARING AUGMENTATION IS INCLUDED - IT MUST IDENTIFY TYPE OF HEARING AUGMENTATION, AREA COVERED WITHIN ROOM AND IF RECEIVERS ARE BEING USED AND WHERE THE RECEIVERS CAN BE OBTAINED. - ACCESSIBLE UNISEX FACILITY SIGNAGE MUST INDICATE WHETHER THE FACILITY IS RIGHT OR LEFT HAND USE - SIGNAGE TO AMBULANT TOILETS MUST BE LOCATED ON THE DOOR OF THE FACILITY - WHERE A NON-ACCESSIBLE DOOR IS LOCATED - DIRECTIONAL SIGNAGE TO THE NEAREST ACCESSIBLE DOOR IS REQUIRED - WHERE A BANK OF TOILETS DOES NOT INCLUDE AN ACCESSIBLE UNISEX FACILITY - DIRECTIONAL SIGNAGE MUST BE PROVIDED TO THE NEAREST FACILITY
D4D9	TACTILE INDICATORS ARE REQUIRED TO ALL ACCESSIBLE BUILDINGS AT EVER APPROACH TO A STAIR OR RAMP, WHERE OVERHEAD OBSTRUCTIONS LESS THAN 2m. TACTILE INDICATORS MUST COMPLY WITH AS/NZS 1428.4.1
E4D5	AN EXIT SIGN MUST BE CLEARLY VISIBLE TO PERSONS APPROACHING THE EXIT AND MUST BE INSTALLED ON, ABOVE OR ADJACENT TO EACH DOOR PROVIDING EGRESS FROM A STOREY TO A HORIZONTAL EXIT, ENCLOSED STAIRS/RAMPS/PASSAGEWAY, EXTERNAL STAIRS, PASSAGES OR RAMPS, OR AN EXTERNAL BALCONY THAT ARE PART OF OR LEAD TO A REQUIRED EXIT
E4D6	WHERE EXITS ARE NOT READILY APPARENT THEN DIRECTIONAL EXIT SIGNAGE IS REQUIRED TO BE INSTALLED



1 PERFORMANCE PLAN - GROUND FLOOR - DDA COMPLIANCE
1 : 100

NOTE:
 • FINISHES AND MATERIALS INDICATIVE ONLY;
 • TO BE CONFIRMED PRIOR TO CONSTRUCTION
 SUBJECT TO SECTION-J AND BCA COMPLIANCE

REV	DESCRIPTION	DATE	BY	CHK
H	INCORPORATED COMMENTS/ISSUED FOR APPROVAL	17/06/24	***	***
G	DESIGN DEVELOPMENT - ISSUED FOR BUILDING APPROVAL	06/06/24	OF	-
F	DESIGN DEVELOPMENT - ISSUED FOR CLIENT REVIEW/APPROVAL	15/05/24	KM	-

FLEETWOOD AUSTRALIA
 2 Percival Rd, Smithfield NSW 2164 | (02) 8718 2500
This document and any of the documents information, ideas and concepts are the property of Fleetwood Australia and may not be used, copied or reproduced without express written permission. © Copyright Fleetwood Australia. All rights reserved. ABRN: 78 114 078 349

GENERAL NOTES
 1. ALL DIMENSIONS TO BE VERIFIED ON SITE PRIOR TO COMMENCEMENT OF WORKS.
 2. USE WRITTEN DIMENSIONS ONLY, DO NOT SCALE DRAWINGS.
 3. READ IN CONJUNCTION WITH OTHER DRAWINGS, SPECIFICATIONS & CONSULTANTS DOCUMENTATION.
 4. REFER ANY DISCREPANCIES IMMEDIATELY TO THE DESIGNER & AWAIT WRITTEN INSTRUCTION.

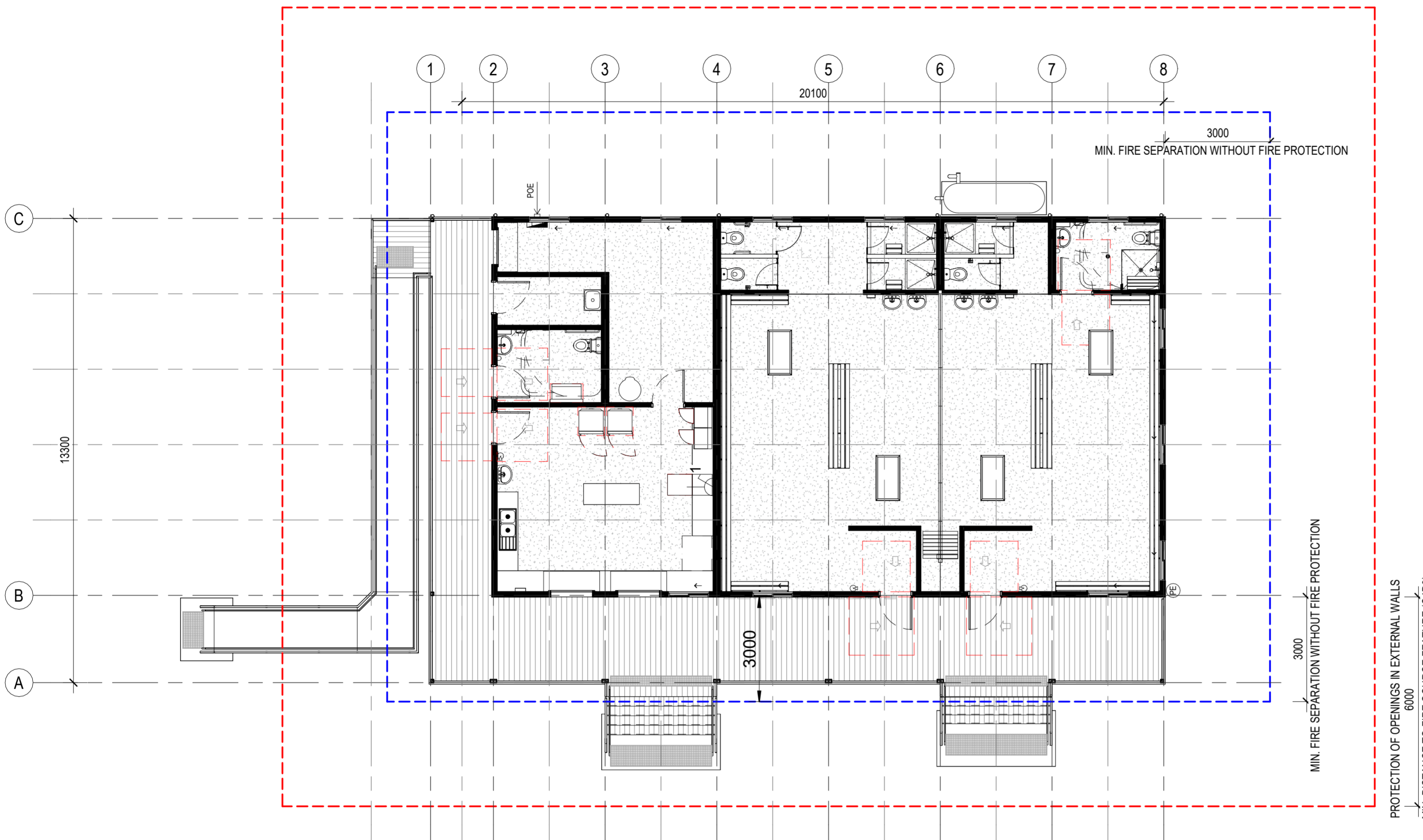
PROJECT NO.: J005017
 PROJECT STATUS: DESIGN DEVELOPMENT
 PROJECT CLIENT: INNER WEST COUNCIL

PROJECT: LEICHHARDT OVAL NO. 2 AMENITIES
 PROJECT ADDRESS: 2 GLOVER AVENUE, LEICHHARDT NSW 2040

SHEET: PERFORMANCE PLAN - DDA & EGRESS
 DESIGN DOCUMENTER: KM
 DESIGN LEAD: MG
 SCALE: 1 : 100
 SIZE: A2
 DRAWING NO.: A210
 REVISION: H

FIRE NOTES - COMMERCIAL

NCC CLAUSE	FIRE NOTES
C2D2	THIS BUILDING IS TYPE-C CONSTRUCTION IN ACCORDANCE WITH NCC VOL.1 TABLE C2D2
C2D3	THIS BUILDING HAS A RISE IN STOREYS OF 1
C2D4	THIS BUILDING IS/IS NOT OF MULTIPLE CLASSIFICATION, IT IS A CLASS 10a & 6 FOR CERTIFICATION
C2D11	THERE ARE MINIMUM REQUIREMENTS REGARDING FLOOR LININGS/COVERING'S FIRE HAZARD PROPERTIES, WALL/CEILING LININGS, AIR-HANDLING DUCTWORK, LIFT CARS & SARKING
C2D12	WHERE PRE-CAST CONCRETE WALLS ARE USED, THEY MUST BE DESIGNED AND INSTALLED IN COMPLIANCE WITH NCC VOL.1. SPECIFICATION 8
C4D3	WHERE AN EXTERNAL WALL IS REQUIRED TO HAVE A FIRE RATING - ANY OPENING WITHIN 3m OF A SIDE OR REAR LOT BOUNDARY, WITHIN 6m OF A FRONT BOUNDARY OR WITHIN 6m OF ANOTHER BUILDING (EXCEPT CLASS 10) MUST BE PROTECTED
GENERAL	FIRE WALLS AND CEILINGS MUST BE BUILT IN ACCORDANCE WITH THE RELEVANT MANUFACTURERS SYSTEM BUILD-UPS AND INSTALLATION INSTRUCTIONS. SUBSTITUTION OF SPECIFIED MATERIALS FOR OTHER ELEMENTS IS STRICTLY NOT TO BE DONE WITHOUT NOTIFICATION OF DESIGNER.
GENERAL	WARNING: THE MANUFACTURER/BUILDER /SUB-CONTRACTORS MUST FOLLOW ALL DETAILS REGARDING ACTIVE AND PASSIVE FIRE SYSTEM INSTALL AND MUST MAKE SURE THEY ARE MEETING THEIR OBLIGATIONS UNDER NCC, RELEVANT AUSTRALIAN STANDARDS, MANUFACTURERS SYSTEM INSTALLATION GUIDES ETC. WHERE ANY DOUBTS ARISE, STOP WORK AND ASK!



1 PERFORMANCE PLAN - GROUND FLOOR - FIRE
1 : 100

FIRE RESISTANCE LEVEL



NOTE:
 • FINISHES AND MATERIALS INDICATIVE ONLY;
 • TO BE CONFIRMED PRIOR TO CONSTRUCTION
 SUBJECT TO SECTION-J AND BCA COMPLIANCE

REV	DESCRIPTION	DATE	BY	CHK
H	INCORPORATED COMMENTS/ISSUED FOR APPROVAL	17/06/24	***	***
G	DESIGN DEVELOPMENT - ISSUED FOR BUILDING APPROVAL	06/06/24	OF	-
F	DESIGN DEVELOPMENT - ISSUED FOR CLIENT REVIEW/APPROVAL	15/05/24	KM	-



2 Percival Rd, Smithfield NSW 2164 | (02) 8718 2500
 This document and any of the documents information, ideas and concepts are the property of Fleetwood Australia and may not be used, copied or reproduced without express written permission. © Copyright Fleetwood Australia. All rights reserved. ADRN: 78 114 078 349

GENERAL NOTES
 1. ALL DIMENSIONS TO BE VERIFIED ON SITE PRIOR TO COMMENCEMENT OF WORKS.
 2. USE WRITTEN DIMENSIONS ONLY, DO NOT SCALE DRAWINGS.
 3. READ IN CONJUNCTION WITH OTHER DRAWINGS, SPECIFICATIONS & CONSULTANTS DOCUMENTATION.
 4. REFER ANY DISCREPANCIES IMMEDIATELY TO THE DESIGNER & AWAIT WRITTEN INSTRUCTION.

PROJECT NO.: J005017
 PROJECT STATUS: DESIGN DEVELOPMENT
 PROJECT CLIENT: INNER WEST COUNCIL

PROJECT: LEICHHARDT OVAL NO. 2 AMENITIES
 PROJECT ADDRESS: 2 GLOVER AVENUE, LEICHHARDT NSW 2040

SHEET PERFORMANCE PLAN - FIRE

DESIGN DOCUMENTER: KM
 DESIGN LEAD: MG
 SCALE: 1 : 100
 SIZE: A2
 DRAWING NO.: A211
 REVISION: H

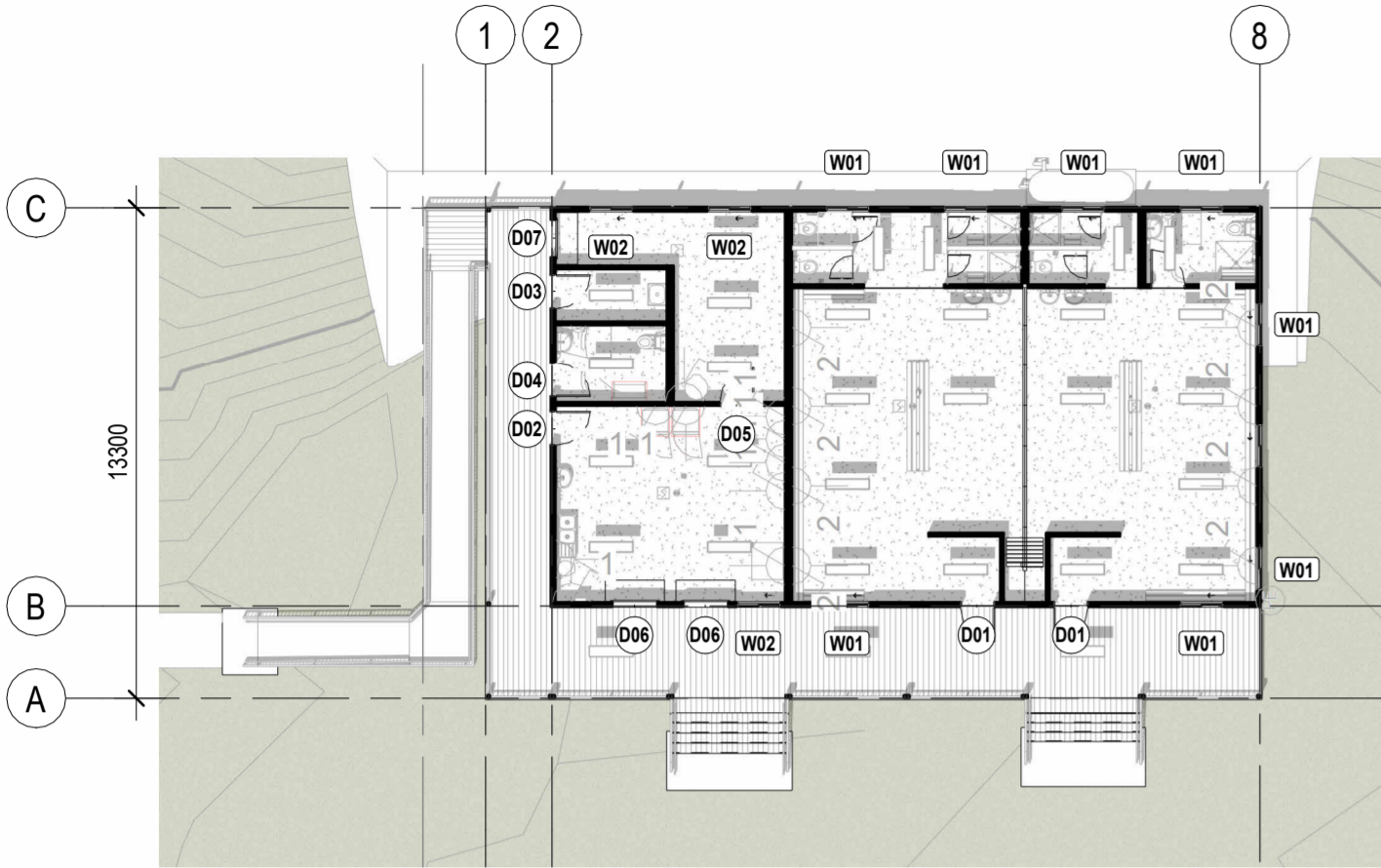
NOTE FOR ENERGY ASSESSOR - REFER TO FLOOR/WALL/CEILING AND ROOF MAKE-UPS IN ENTIRETY TO ASSESS OVERALL SYSTEM R-VALUES

SECTION J COMPLIANCE NCC 2019 - COMMERCIAL

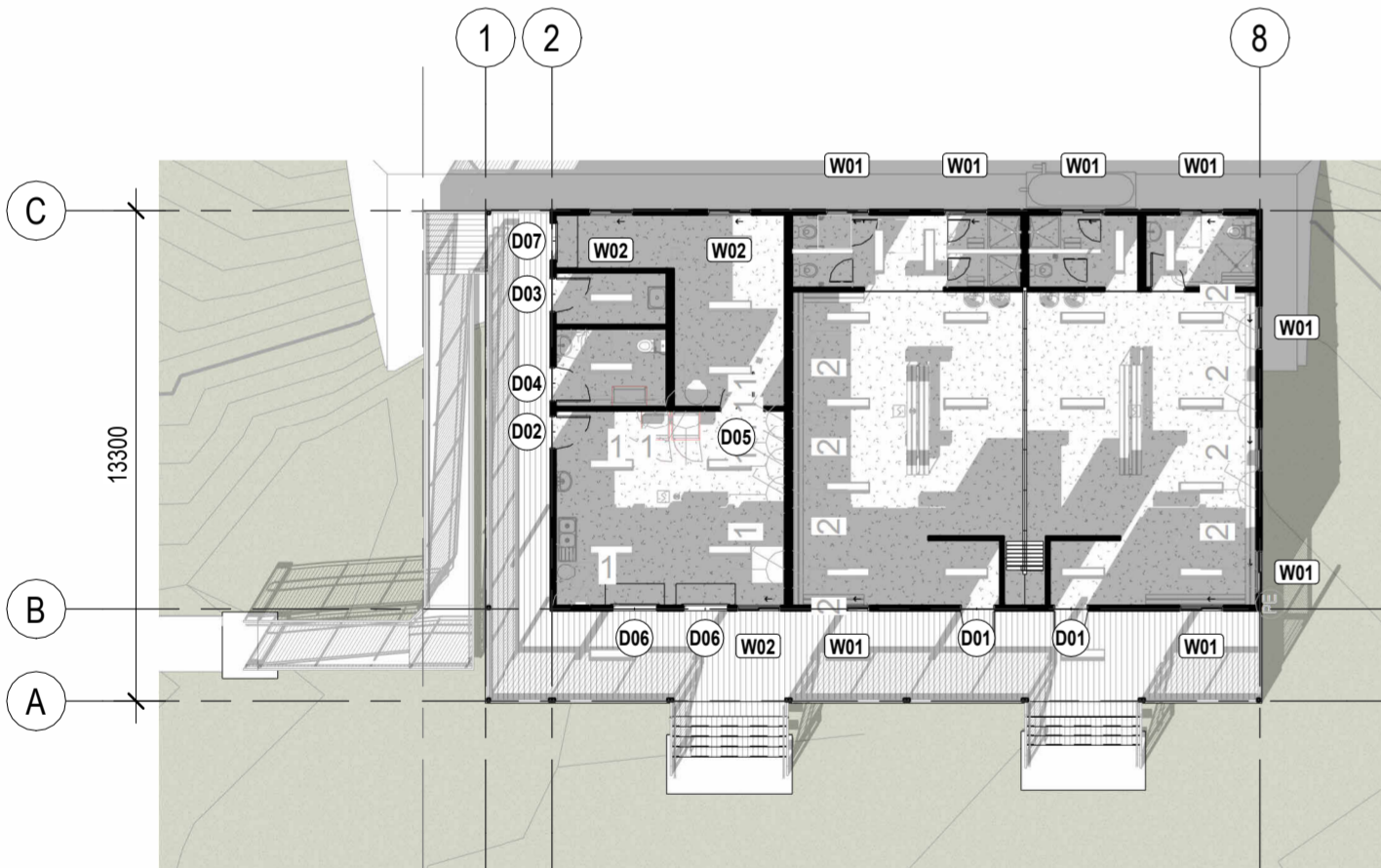
NCC CLAUSE	COMPLIANCE REQUIREMENTS
J1 - BUILDING FABRIC	
J1.2	ALL INSULATION SHOULD BE BOTH TESTED AND LABELLED IN ACCORDANCE WITH IN ACCORDANCE WITH AS4859.1 AND INSTALLED TO THE REQUIREMENT OF J1.2 (A) AND (C).
J1.2	ALL REFLECTIVE INSULATION MUST BE INSTALLED IN ACCORDANCE WITH THE REQUIREMENTS OF J1.2 (B) FOR COMPLIANCE
J3 - BUILDING SEALING	
J3.3	ROOF LIGHTS MUST BE SEALED OR CAPABLE OF BEING SEALED UNDER THE REQUIREMENTS OF J3.3
J3.4	ALL ENVELOPE DOORS AND OPENABLE WINDOWS OR THE LIKE MUST BE SEALED.
J3.4	ALL DOORS OR OPENABLE WINDOWS IN CLIMATE ZONES 4, 5, 6, 7, AND 8 MUST BE SEALED IN ACCORDANCE J3.4 (C).
J3.4	ALL ENTRANCE TO THE BUILDING TO A CONDITIONED SPACE OF GREATER THAN 50m ² , MUST HAVE AN AIRLOCK, SELF-CLOSING DOOR, RAPID ROLLER DOOR, REVOLVING DOOR OR THE LIKE.
J3.4	A LOADING DOCK LEADING TO A CONDITIONED SPACE, MUST BE FITTED WITH A RAPID ROLLER DOOR OR THE LIKE
J3.5	EXHAUST FANS IN CONDITIONED SPACES OR HABITABLE ROOMS (IN CLIMATE ZONES 4 - 8) MUST BE FITTED WITH A SEALING DEVICE SUCH AS A SELF CLOSING DAMPER OR THE LIKE.
J3.6	CEILINGS, WALLS AND FLOORS TO BE ENCLOSED BY INTERNAL (CLOSE FITTING) LINING SYSTEMS OR CONSTRUCTED AT JUNCTIONS AND PENETRATIONS TO MINIMISE AIR LEAKAGE IN ACCORDANCE WITH REQUIREMENTS OF J3.6 (B)(I).
J3.6	OPENINGS IN CEILINGS, WALLS AND FLOORS ARE TO BE CONSTRUCTED TO MINIMISE AIR LEAKAGE AT JUNCTIONS AND PENETRATIONS IN ACCORDANCE WITH J3.6 (B)(II)
J5 - AIRCON & VENTILATION	
J5.2	AN AIR CONDITIONING SYSTEM MUST HAVE A CONTROL DEAD BAND OF NOT LESS THAN 2°C, EXCEPT WHERE A SMALLER RANGE IS REQUIRED FOR SPECIALIZED APPLICATIONS - J5.2(A)(VIII).
J5.3	A MECHANICAL VENTILATION SYSTEM, INCLUDING ONE THAT IS PART OF AN AIR-CONDITIONING SYSTEM, WHEN SERVING A CONDITIONED SPACE MUST HAVE AN ENERGY RECLAIMING SYSTEM THAT PRECONDITIONS OUTDOOR AIR AT A MINIMUM SENSIBLE HEAT TRANSFER EFFECTIVENESS OF 60% - J5.3(A)(II)(A)(II).
J5.3	MECHANICAL VENTILATION SYSTEM INCLUDING ONE THAT IS PART OF AN AIR-CONDITIONING SYSTEM AND HAS MORE THAN 500 l/s OUTDOOR FLOW RATE MUST HAVE AN ENERGY RECLAIMING SYSTEM THAT PRECONDITIONS OUTDOOR AIR AT A MINIMUM SENSIBLE HEAT TRANSFER EFFECTIVENESS OF 60%. J5.3(A)(II) (AA) AND J5.3(A)(II) (BB).
J5.3	TIME SWITCHES MUST BE PROVIDED TO A MECHANICAL VENTILATION SYSTEM WITH AN AIRFLOW RATE OF MORE THAN 1000 l/s AND MUST BE CAPABLE OF SWITCHING ELECTRIC POWER ON AND OFF AT VARIABLE PRE-PROGRAMMED TIMES AND ON VARIABLE PRE-PROGRAMMED CYCLES J5.3(D)(I) AND J5.3(D)(II).
J5.5	DUCTWORK AND FITTING IN AN AIR-CONDITIONING SYSTEM MUST BE PROVIDED WITH INSULATION COMPLYING WITH AS/NZS 4859.1 AND HAVING AN INSULATION R-VALUE GREATER THAN OR EQUAL TO 1.0 FOR FLEXIBLE DUCTWORK. ALSO, THE INSULATION MUST BE PROTECTED AGAINST THE EFFECT OF THE WEATHER AND SUNLIGHT. J5.5(A) AND J5.5(B).
J6 - ARTIFICIAL LIGHTING & POWER	
J6.2	CONTROL DEVICES SPECIFIED MUST COMPLY WITH THE REQUIREMENT OF SPECIFICATION J6.
J6.3	ARTIFICIAL LIGHTING WITHIN ALL ROOMS AND SPACES MUST BE CONTROLLED BY A SWITCH AND/OR CONTROL DEVICE.
J6.3	90% OF ARTIFICIAL LIGHTING CONTROLLED FROM ADJACENT ROOMS OR SPACES, MUST BE VISIBLE FROM AN EASILY ACCESSIBLE SWITCH AND OR CONTROL DEVICE.
J6.3 (c)	ARTIFICIAL LIGHTING CONTROLS MUST NOT OPERATE LIGHTING FOR AN AREA OF GREATER THAN 250m ²
J6.3(g)	DAYLIGHT SENSOR AND DYNAMIC CONTROL DEVICES MUST CONTROL A SINGLE ZONE FOYER, CORRIDOR AND OTHER CIRCULATION SPACES WITH MORE THAN 250W OF ARTIFICIAL LIGHTING AND ADJACENT WINDOWS (IN ACCORDANCE WITH SPECIFICATION J6).
J6.5	FACADE OR SIGNAGE LIGHTING ATTACHED TO OR DIRECTED AT THE FACADE FOR DECORATIVE PURPOSES (IF INSTALLED), MUST HAVE A SEPARATE TIME SWITCH IN ACCORDANCE WITH SPECIFICATION J6.
J6.5	EXTERIOR ARTIFICIAL LIGHTING MUST BE CONTROLLED BY EITHER A DAYLIGHT SENSOR OR TIME SWITCH AS PER THE REQUIREMENTS OF J6.5(A)(I)(B).
J6.5	EXTERIOR ARTIFICIAL LIGHTING, EXCEEDING 100W TOTAL LIGHTING LOAD, MUST COMPLY WITH THIS SECTION UNDER EITHER PART J6.5(A)(II)(A) OR J6.5(A)(II)(B).
J6.6	THE POWER SUPPLY TO SPECIFIED BOILING WATER AND OR CHILLED WATER UNITS, MUST BE CONTROLLED BY A TIME SWITCH IN ACCORDANCE WITH SPECIFICATION J6.
J7 - HOT WATER & POOLS	
J7.2	THE HEATED WATER SUPPLY SYSTEM MUST BE DESIGNED AND INSTALLED IN ACCORDANCE WITH PART B2 OF NCC VOLUME 3 - PLUMBING CODE.

INSULATION SCHEDULE	
TAG	DESCRIPTION
Ceilings	
CIN-R2590	90mm GLASSWOOL BATT, R2.5
Roofs	
RIN-R13	ROOF BLANKET, R1.3
Walls	
WIN-K90	KINGSPAN AIRCELL 90, R0.2, 9mm (FLAMMABILITY INDEX <5)
WIN-R25	90mm GLASSWOOL BATTS, R2.5HD

GLAZING SCHEDULE			
TAG	DESCRIPTION	U-VALUE	SHGC
Windows			
W01	FACE FIXED SLIDING WINDOW - OBSCURE	6	0.06
W02	FACE FIXED SLIDING WINDOW - CLEAR	6	0.06
W03	FIXED SKYLIGHT - VELUX FCM 2246	2.9	0.28



1 PERFORMANCE PLAN - GROUND FLOOR - ENERGY - SUMMER SOLSTICE
1 : 200



3 PERFORMANCE PLAN - GROUND FLOOR - ENERGY - WINTER SOLSTICE
1 : 200

REV	DESCRIPTION	DATE	BY	CHK
H	INCORPORATED COMMENTS/ISSUED FOR APPROVAL	17/06/24	***	***



2 Percival Rd, Smithfield NSW 2164 | (02) 8718 2500
This document and any of the documents information, ideas and concepts are the property of Fleetwood Australasia and may not be used, copied or reproduced without express written permission. © Copyright Fleetwood Australasia. All rights reserved. ADRN: 78 114 078 249

GENERAL NOTES
1. ALL DIMENSIONS TO BE VERIFIED ON SITE PRIOR TO COMMENCEMENT OF WORKS.
2. USE WRITTEN DIMENSIONS ONLY, DO NOT SCALE DRAWINGS.
3. READ IN CONJUNCTION WITH OTHER DRAWINGS, SPECIFICATIONS & CONSULTANTS DOCUMENTATION.
4. REFER ANY DISCREPANCIES IMMEDIATELY TO THE DESIGNER & AWAIT WRITTEN INSTRUCTION.

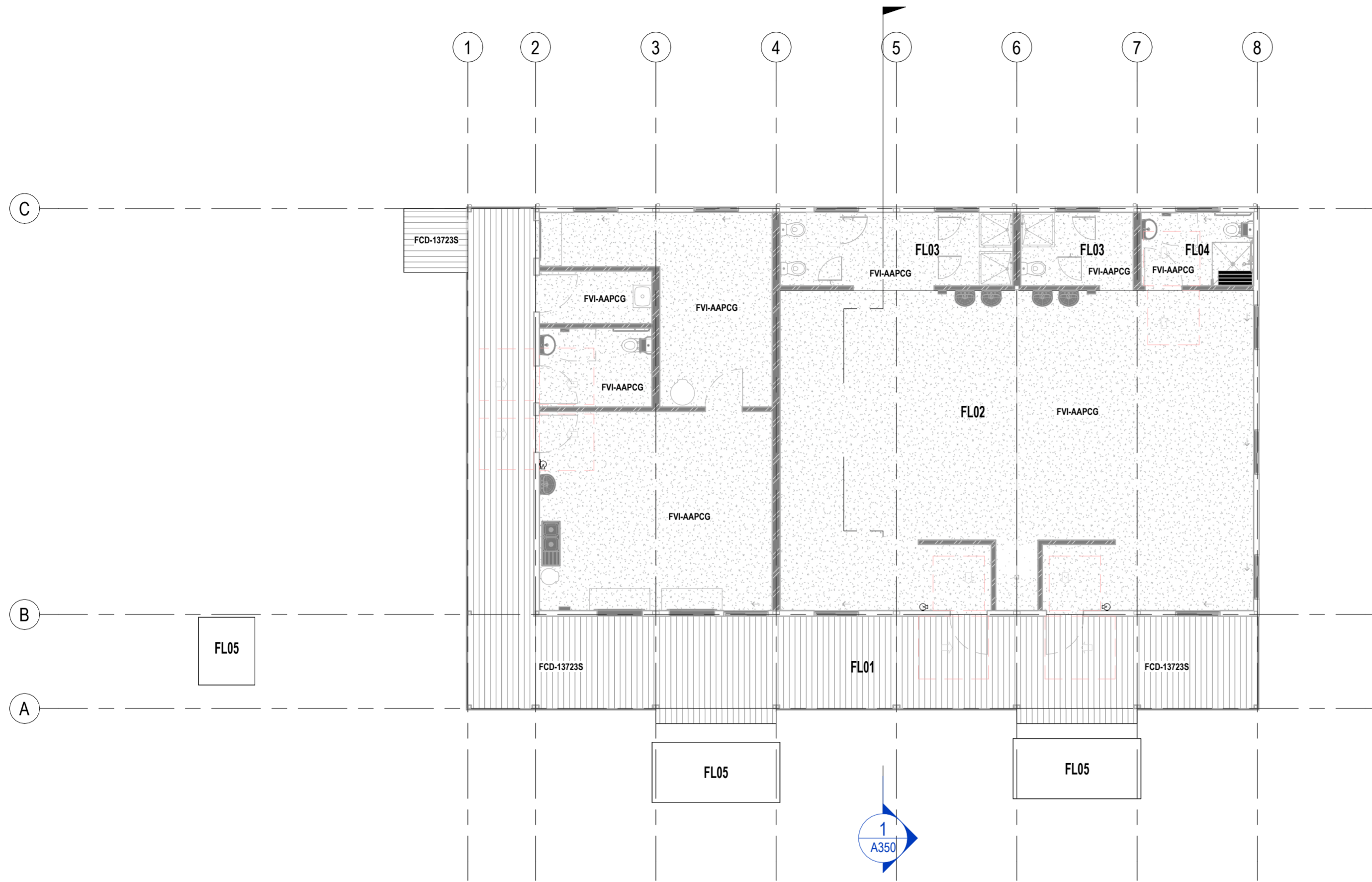
PROJECT NO.: J005017
PROJECT STATUS: DESIGN DEVELOPMENT
PROJECT CLIENT: INNER WEST COUNCIL

PROJECT: LEICHHARDT OVAL NO. 2 AMENITIES
PROJECT ADDRESS: 2 GLOVER AVENUE, LEICHHARDT NSW 2040

SHEET: PERFORMANCE PLAN - ENERGY EFFICIENCY

DESIGN DOCUMENTER: KM
DESIGN LEAD: MG
SCALE: 1 : 200
SIZE: A2

DRAWING NO.: A213
REVISION: H



FLOOR TYPE SCHEDULE				
TAG	DESCRIPTION	FIRE RESISTANCE LEVEL	ACOUSTICS Ln,w	MANUF. SYSTEM NO.
FL01	FLEETWOOD NSW STANDARD MODWOOD DECK	--/--		
FL02	FLEETWOOD NSW TERMIFLOR INTERIOR FLOOR - NON-SLIP VINYL	--/--		
FL03	FLEETWOOD NSW CFC INTERIOR FLOOR - NON-SLIP VINYL	--/--		
FL04	FLEETWOOD NSW SCREEDED CFC INTERIOR FLOOR - NON-SLIP VINYL	--/--		
FL05	CONCRETE PAD TO RAMP/STAIR	--/--		

FLOOR FINISHES/COVERINGS - PERFORMANCE REQUIREMENTS					
TAG	DESCRIPTION	FIRE HAZARD PROPERTIES			SLIP RESISTANCE
		CRITICAL RADIANT FLUX (CHF>2.2 W/m²)	SMOKE GROWTH RATE INDEX (<750 %-MINUTES)	GROUP NUMBER (WHERE FLOOR LINING CONTIGUES > 150mm UP WALL)	
FCD-13723S	COMPOSITE TIMBER DECKING MODWOOD SILVERGUM 137x23mm (CONCEALED CLIPS)				R11
FVI-AAPCG	VINYL - RESILIENT SHEET - ARMSTRONG ACCOLADE PLUS	>11kW/m²	122%.min	3	P3 / R10

REV	DESCRIPTION	DATE	BY	CHK
H	INCORPORATED COMMENTS/ISSUED FOR APPROVAL	17/06/24	***	***

FLEETWOOD AUSTRALIA

2 Percival Rd, Smithfield NSW 2164 | (02) 8718 2500
This document and any of the documents information, ideas and concepts are the property of Fleetwood Australia and may not be used, copied or reproduced without express written permission. © Copyright Fleetwood Australia. All rights reserved. ADRN 78 114 078 349

GENERAL NOTES
 1. ALL DIMENSIONS TO BE VERIFIED ON SITE PRIOR TO COMMENCEMENT OF WORKS.
 2. USE WRITTEN DIMENSIONS ONLY, DO NOT SCALE DRAWINGS.
 3. READ IN CONJUNCTION WITH OTHER DRAWINGS, SPECIFICATIONS & CONSULTANTS DOCUMENTATION.
 4. REFER ANY DISCREPANCIES IMMEDIATELY TO THE DESIGNER & AWAIT WRITTEN INSTRUCTION.

PROJECT NO.: J005017
 PROJECT STATUS: DESIGN DEVELOPMENT
 PROJECT CLIENT: INNER WEST COUNCIL

PROJECT: LEICHHARDT OVAL NO. 2 AMENITIES
 PROJECT ADDRESS: 2 GLOVER AVENUE, LEICHHARDT NSW 2040

SHEET: FLOOR TYPE LAYOUT - GROUND FLOOR

DESIGN DOCUMENTER: Author
 DESIGN LEAD: Checker
 SCALE: 1:100
 SIZE: A2
 REVISION: H

DRAWING NO. **A220**

FLOOR MATERIAL SCHEDULE (MATERIALS RUN FORM 'EXTERIOR' TO 'INTERIOR')		
TAG	MATERIAL: DESCRIPTION	MATERIAL: TREATMENT
FL01 FLEETWOOD NSW STANDARD MODWOOD DECK		
SSb-P15SB	150PFC CHASSIS BEAM, PAINTED	STANDARD BLACK
SFJ-C10015	FLOOR JOISTS, 100mm LIPPED C SECTION, 1.55BMT TRUECORE G550 (SEE SHOP DRAWINGS FOR ENGINEERING DETAILS/JOIST SPACINGS)	AM150
FCD-13723S	COMPOSITE TIMBER DECKING MODWOOD SILVERGUM 137x23mm (CONCEALED CLIPS)	SILVERGUM - BRUSHED/SMOOTH - R11 SLIP-RESISTANCE
FL02 FLEETWOOD NSW TERMIFLOR INTERIOR FLOOR - NON-SLIP VINYL		
SSb-P15SB	150PFC CHASSIS BEAM, PAINTED	STANDARD BLACK
SFJ-C10015	FLOOR JOISTS, 100mm LIPPED C SECTION, 1.55BMT TRUECORE G550 (SEE SHOP DRAWINGS FOR ENGINEERING DETAILS/JOIST SPACINGS)	AM150
FCB-22T	STRUCTAFLOR H2 REDTONGUE PARTICLEBOARD, 22mm, 3600x800mm	H2 TREATED
FVI-AAPCG	VINYL - RESILIENT SHEET - ARMSTRONG ACCOLADE PLUS	CAMDEN GREY
FL03 FLEETWOOD NSW CFC INTERIOR FLOOR - NON-SLIP VINYL		
SSb-P15SB	150PFC CHASSIS BEAM, PAINTED	STANDARD BLACK
SFJ-C10015	FLOOR JOISTS, 100mm LIPPED C SECTION, 1.55BMT TRUECORE G550 (SEE SHOP DRAWINGS FOR ENGINEERING DETAILS/JOIST SPACINGS)	AM150
FFC-18	COMPRESSED FIBRE CEMENT, 18mm	
FVI-AAPCG	VINYL - RESILIENT SHEET - ARMSTRONG ACCOLADE PLUS	CAMDEN GREY
FL04 FLEETWOOD NSW SCREEDED CFC INTERIOR FLOOR - NON-SLIP VINYL		
SSb-P15SB	150PFC CHASSIS BEAM, PAINTED	STANDARD BLACK
SFJ-C10015	FLOOR JOISTS, 100mm LIPPED C SECTION, 1.55BMT TRUECORE G550 (SEE SHOP DRAWINGS FOR ENGINEERING DETAILS/JOIST SPACINGS)	AM150
FFC-18	COMPRESSED FIBRE CEMENT, 18mm	
FCSCR	CEMENT SCREED	
FVI-AAPCG	VINYL - RESILIENT SHEET - ARMSTRONG ACCOLADE PLUS	CAMDEN GREY

FLOOR TYPE SCHEDULE - TAKE OFF					
TAG	DESCRIPTION	FIRE RESISTANCE LEVEL	ACOUSTICS Ln,w	MANUF. SYSTEMS NO.	AREA
SITE BENCHMARK RL08.580					
FL05	CONCRETE PAD TO RAMP/STAIR	--/--			14 m²
00 FL					
FL01	FLEETWOOD NSW STANDARD MODWOOD DECK	--/--			77 m²
FL02	FLEETWOOD NSW TERMIFLOR INTERIOR FLOOR - NON-SLIP VINYL	--/--			180 m²
FL03	FLEETWOOD NSW CFC INTERIOR FLOOR - NON-SLIP VINYL	--/--			21 m²
FL04	FLEETWOOD NSW SCREEDED CFC INTERIOR FLOOR - NON-SLIP VINYL	--/--			7 m²

FLOOR FINISHES/COVERINGS PERFORMANCE REQUIREMENTS - ALL					
TAG	DESCRIPTION	CRITICAL RADIANT FLUX (CHF>2.2 W/m²)	SMOKE GROWTH RATE INDEX (<750 %-MINUTES)	GROUP NUMBER (WHERE FLOOR LINING CONTINUES UP WALL)	SLIP RESISTANCE
FCD-13723S	COMPOSITE TIMBER DECKING MODWOOD SILVERGUM 137x23mm (CONCEALED CLIPS)				R11
FVI-AAPCG	VINYL - RESILIENT SHEET - ARMSTRONG ACCOLADE PLUS	>11kW/m²	122%.min	3	P3 / R10

FLOOR NOTES - COMMERCIAL

NCC CLAUSE	NOTES
1. GENERAL	FLOOR MATERIALS MUST NOT BE SUBSTITUTED DURING MANUFACTURE AND CONSTRUCTION WITHOUT THE EXPRESS APPROVAL IN WRITING OF THE DESIGN PROJECT LEAD.
C2D11	FLOOR LININGS AND COVERINGS MUST COMPLY WITH THE FIRE HAZARD PROPERTIES AS PER NCC2022 VOL. 1 - SPECIFICATION 7, NAMELY A SMOKE DEVELOPMENT RATE BELOW 750%-MINUTES A CRITICAL RADIANT FLUX DETERMINED FROM TABLE S7C3 AND A GROUP NUMBER (WHERE FLOOR COVERING IS COVERED UP WALL >150mm) COMPLYING WITH TABLE S7C6(b)
C4D15	ENSURE ALL SERVICE PENETRATIONS THROUGH A FIRE OR ACOUSTIC-RATED FLOOR/CEILING SYSTEM MEET THE REQUIREMENT OF NCC VOL.1 SPECIFICATION 13: PENETRATION OF WALLS, FLOORS AND CEILINGS BY SERVICES, PARTICULARLY IN REGARDS TO OFFSET OF BACK TO BACK PENETRATIONS AND FIRE-STOPPING.
D4D4(g)	CARPET PILE HEIGHT SHALL NOT EXCEED 11mm AND BACKING THICKNESS SHALL NOT EXCEED 4mm (THIS SUPERSEDES CL 7.4.1(a) OF AS 1428.1
F2D2	IN CLASS 2 - 9 BUILDINGS, ELEMENTS WITHIN WET AREAS MUST BE WATER-RESISTANT IN ACCORDANCE WITH NCC VOL. 1: SPECIFICATION 26 & COMPLY WITH AS 3740 WATERPROOFING OF DOMESTIC WET AREAS
F2D3	WHERE A URINAL IS INSTALLED THE FLOOR COVERING MUST BE IMPERVIOUS AND THE FLOOR OF THE ROOM GRADED
F2D4(a)	CLASS 2, 3 & 4 BUILDINGS WITH BATHROOMS 7 LAUNDRIES AND LOCATED ABOVE ANOTHER SOU OR PUBLIC SPACE MUST HAVE A FLOOR WASTE
F2D4(b)	WHERE A FLOOR WASTE IS INSTALLED MIN FALL IS 1:80 - MAX. FALL IS 1:50
F7D5	A FLOOR IN A CLASS 2, 3 MUST HAVE A Rw+Ctr OF 50 AND A WEIGHTED, NORMALISED SOUND PRESSURE LEVEL (Ln,w) OF NOT MORE THAN 62 WHERE IT SEPARATES SOLE OCCUPANCY UNITS FROM EACH OTHER OR SOU FROM A PLANT ROOM/LIFT SHAFT, STAIRS/PUBLIC LOBBY OR CORRIDOR OR WHERE IT IS A DIFFERENT BUILDING CLASSIFICATION. A FLOOR IN A CLASS 9c SEPARATING SOU MUST HAVE AN Rw NO LESS THAN 45.
J1.2	ANY FLOOR INSULATION SHOULD BE BOTH TESTED AND LABELLED IN ACCORDANCE WITH IN ACCORDANCE WITH AS4859.1 AND INSTALLED TO THE REQUIREMENT OF J1.2 (A) AND (C).
S14C2	WHERE A FLOOR & ITS COVERING RUNS UNDER A FIRE DOOR - THE FLOOR AND THE COVERING MUST BE NON-COMBUSTIBLE

REV	DESCRIPTION	DATE	BY	CHK
H	INCORPORATED COMMENTS/ISSUED FOR APPROVAL	17/06/24	***	***

FLEETWOOD AUSTRALIA

41-55 Platinum Street, Crestmead QLD 4132 | (07) 3489 5000
This document and any of the documents information, ideas and concepts are the property of Fleetwood Australiand may not be used, copied or reproduced without express written permission. © Copyright Fleetwood Australia. All rights reserved. ABN: 78 114 078 349

GENERAL NOTES
1. ALL DIMENSIONS TO BE VERIFIED ON SITE PRIOR TO COMMENCEMENT OF WORKS.
2. USE WRITTEN DIMENSIONS ONLY, DO NOT SCALE DRAWINGS.
3. READ IN CONJUNCTION WITH OTHER DRAWINGS, SPECIFICATIONS & CONSULTANTS DOCUMENTATION.
4. REFER ANY DISCREPANCIES IMMEDIATELY TO THE DESIGNER & AWAIT WRITTEN INSTRUCTION.

PROJECT NO.:
J005017

PROJECT STATUS
DESIGN DEVELOPMENT

PROJECT CLIENT
INNER WEST COUNCIL

PROJECT:
LEICHHARDT OVAL NO. 2 AMENITIES

PROJECT ADDRESS
2 GLOVER AVENUE, LEICHHARDT NSW 2040

SHEET
FLOOR SCHEDULES

DESIGN DOCUMENTER
Author

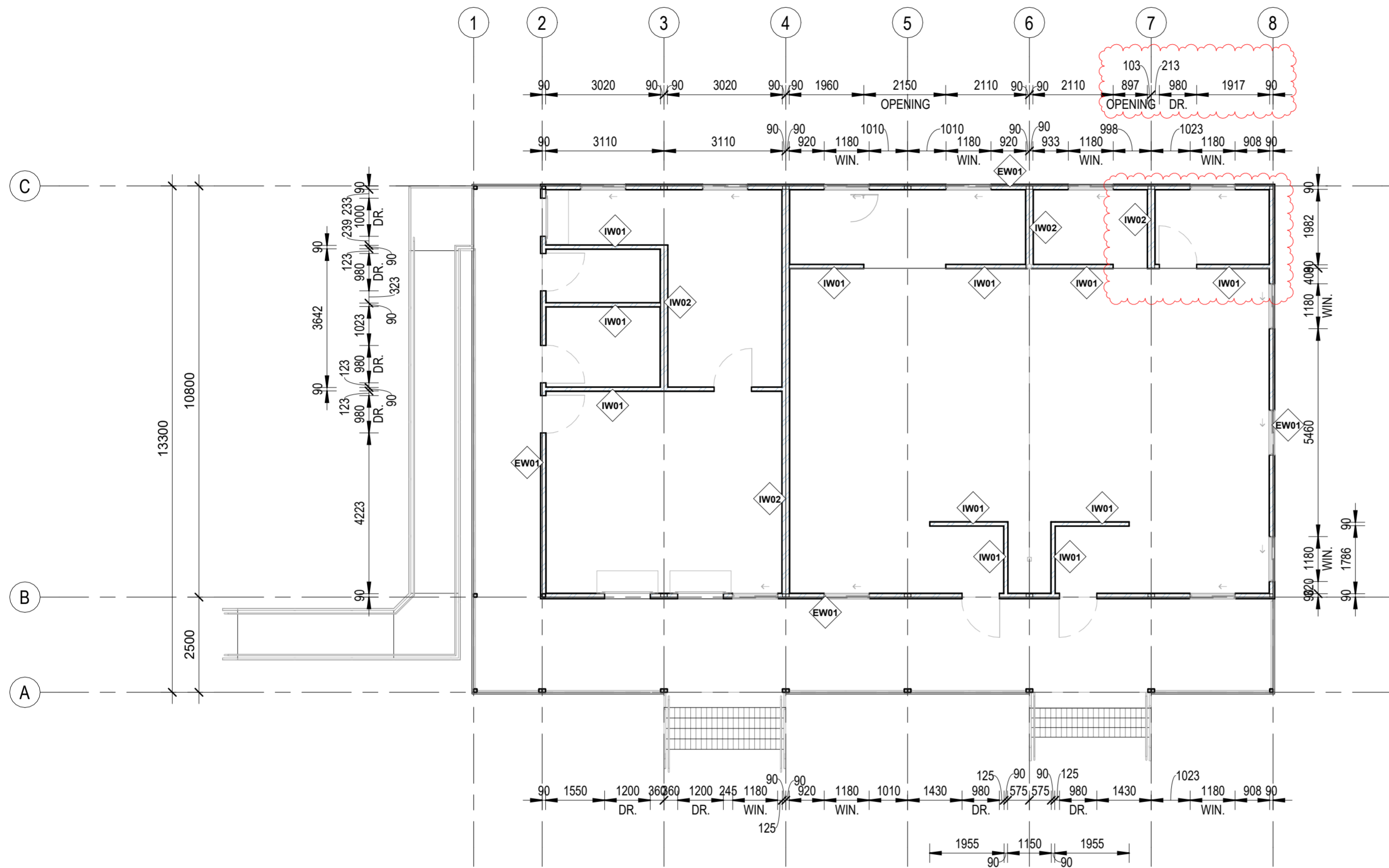
DESIGN LEAD
Checker

SCALE
A2

SIZE
A2

REVISION
H

DRAWING NO.
A225

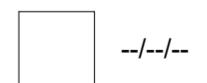


WALL TYPE SCHEDULE					
TAG	DESCRIPTION	FIRE RESISTANCE LEVEL	ACOUSTICS		MANUF. SYSTEM NO.
			Rw	Rw+Ctr	
	Stiles wrap smoothly around panel edges. Neat and clean look, each stile is only 10-12mm wide. Board edges are totally protected even in the toughest environment.				
EW01	EXTERNAL WALL - FC(9)/BATTEN(35)/STUD(90)/PLY(9) - INSULATED	--/-- (Non Load)	49	40	CSR5327(C)
EW02	EXTERNAL WALL - FC(9)/BATTEN(35)/STUD(90)/PLY(9)	--/-- (Non Load)	33	30	CSR5360
IW01	INTERIOR WALL - MP-PBD(13)/STUD(90)/MP-PBD(13) - INSULATED	--/-- (Non Load)	49	40	CSR3017(C)
IW02	INTERIOR WALL - MP-PBD(13)/STUD(90)/MP-PBD(13) - INSULATED	--/-- (Non Load)	58	49	CSR3232(C)

WALL - FIRE HAZARD PROPERTY (NCC v1 S7C4) PERFORMANCE REQUIREMENTS				
TAG	DESCRIPTION	SMOKE GROWTH RATE INDEX (<100m ² /s): OR	AVERAGE SPECIFIC EXTINCTION RATE (<250m ² /KG)	GROUP NUMBER
WPB-M13 P	RECESSED EDGE MULTIPURPOSE PLASTERBOARD (MOISTURE/FIRE RESISTANT), 13mm, JOINTED AND FINISHED FLUSH	<100m ² .s ²		1
WPB-MC1 3P	RECESSED EDGE MULTIPURPOSE PLASTERBOARD (MOISTURE/FIRE RESISTANT), 13mm, JOINTED AND FINISHED FLUSH	<100m ² .s ²		1
WSK-VCV SG	150mm VINYL COVING - AS PER FLOOR SCHEDULE - PENCIL COVE/20mm COVE FILLET/32mm COVE FILLET			

FIRE RESISTANCE LEVEL

ACOUSTIC RATING



REV	DESCRIPTION	DATE	BY	CHK
H	INCORPORATED COMMENTS/ISSUED FOR APPROVAL	17/06/24	***	***

FLEETWOOD AUSTRALIA

2 Percival Rd, Smithfield NSW 2164 | (02) 8718 2500
 This document and any of the documents information, ideas and concepts are the property of Fleetwood Australia and may not be used, copied or reproduced without express written permission. © Copyright Fleetwood Australia. All rights reserved. ADRN 78 114 078 249

GENERAL NOTES
 1. ALL DIMENSIONS TO BE VERIFIED ON SITE PRIOR TO COMMENCEMENT OF WORKS.
 2. USE WRITTEN DIMENSIONS ONLY, DO NOT SCALE DRAWINGS.
 3. READ IN CONJUNCTION WITH OTHER DRAWINGS, SPECIFICATIONS & CONSULTANTS DOCUMENTATION.
 4. REFER ANY DISCREPANCIES IMMEDIATELY TO THE DESIGNER & AWAIT WRITTEN INSTRUCTION.

PROJECT NO.: J005017
 PROJECT STATUS: DESIGN DEVELOPMENT
 PROJECT CLIENT: INNER WEST COUNCIL

PROJECT: LEICHHARDT OVAL NO. 2 AMENITIES
 PROJECT ADDRESS: 2 GLOVER AVENUE, LEICHHARDT NSW 2040

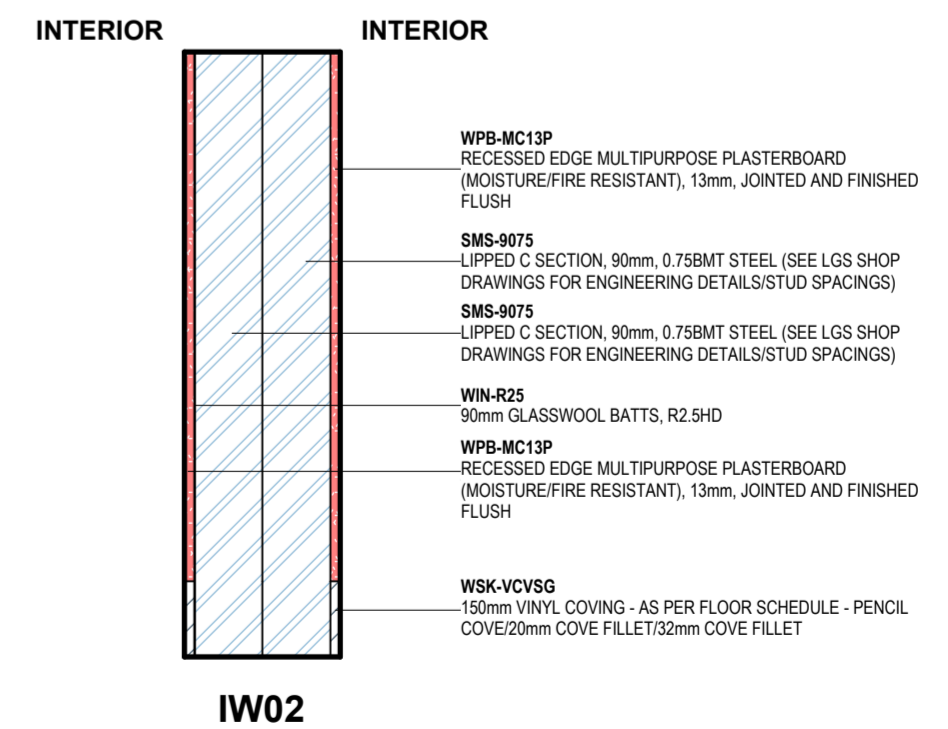
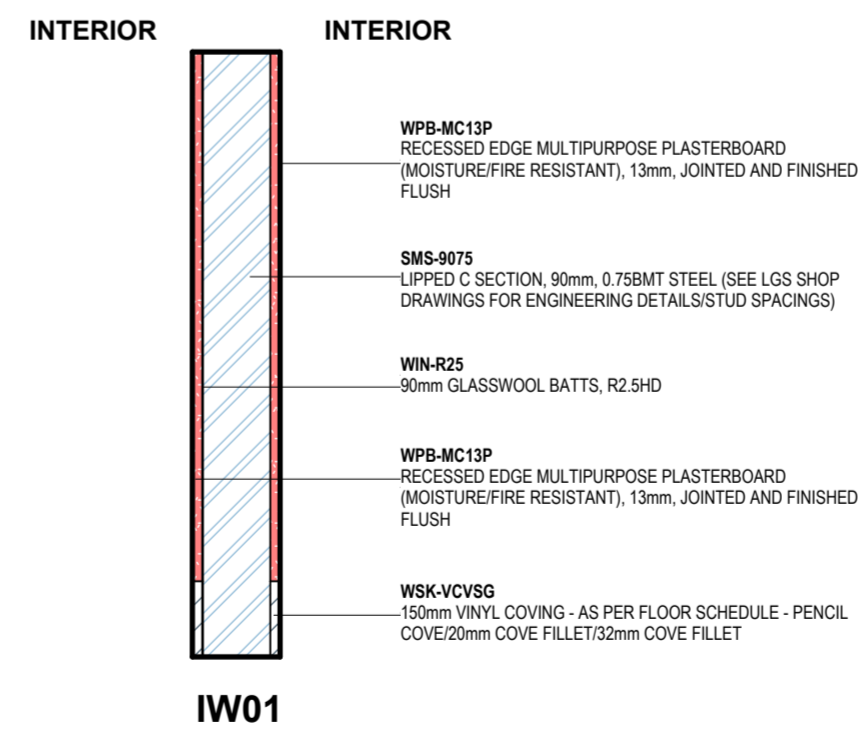
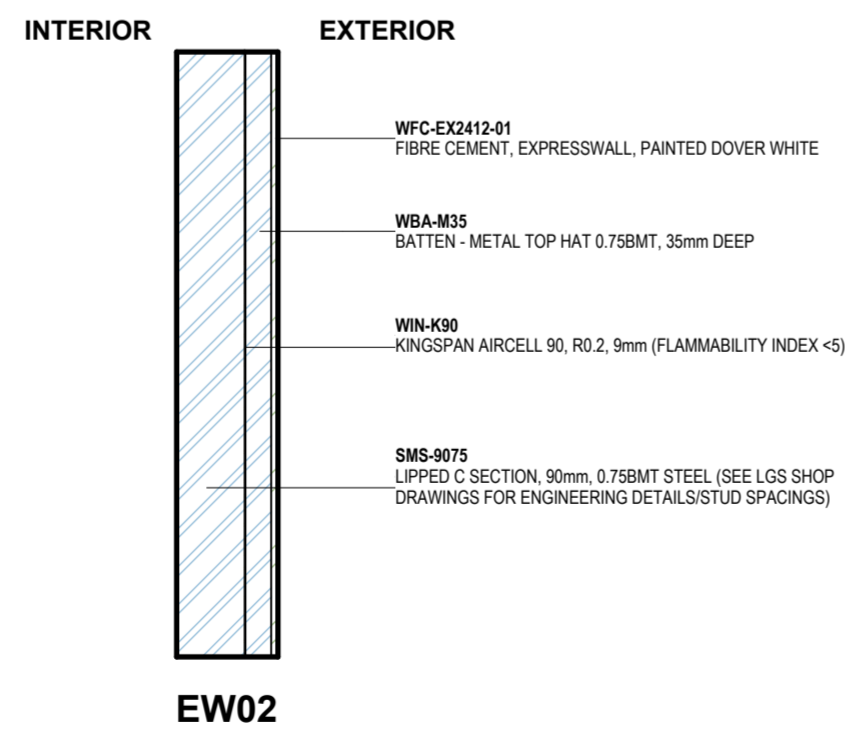
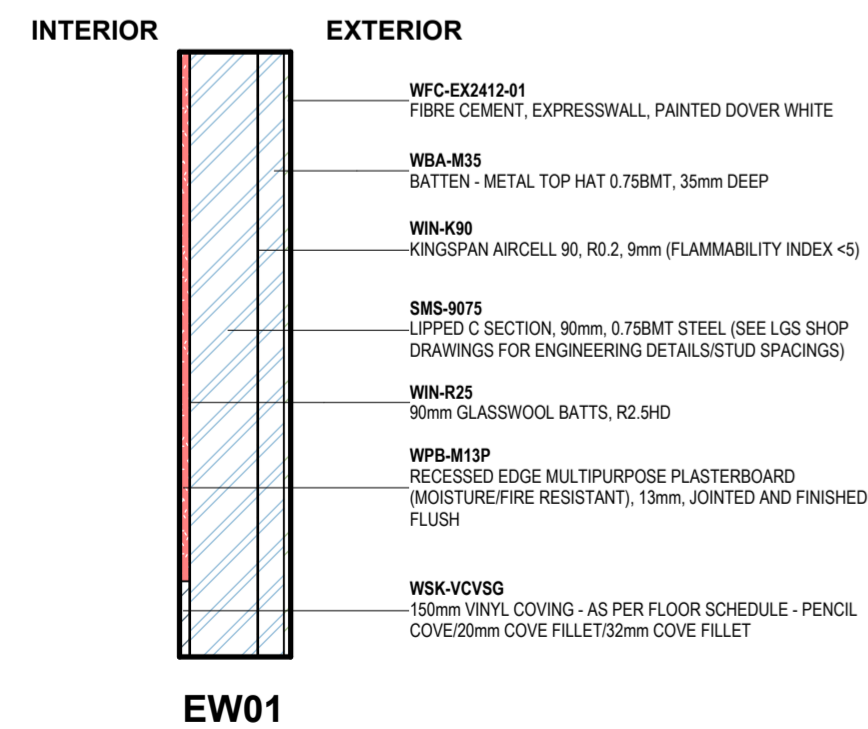
SHEET: WALL TYPE LAYOUT - GROUND FLOOR
 DESIGN DOCUMENTER: KM
 DESIGN LEAD: MG
 SCALE: 1:100
 SIZE: A2
 DRAWING NO.: A230
 REVISION: H

WALL MATERIAL SCHEDULE (MATERIALS RUN FROM 'EXTERIOR' TO 'INTERIOR')			
TAG	DESCRIPTION	TREATMENT/FINISH	COMBUSTIBLE (AS 1530.1)
EW01 EXTERNAL WALL - FC(9)/BATTEN(35)/STUD(90)/PLY(9) - INSULATED CSR5327(C)			
WFC-EX2412-01	FIBRE CEMENT, EXPRESSWALL, PAINTED DOVER WHITE	PAINTED, DULUX WEATHERMAX 'DOVER WHITE'	
WBA-M35	BATTEN - METAL TOP HAT 0.75BMT, 35mm DEEP	ZINCALUME	No
WIN-K90	KINGSPAN AIRCELL 90, R0.2, 9mm (FLAMMABILITY INDEX <5)	NON-REFLECTIVE FACE TO EXTERIOR	
SMS-9075	LIPPED C SECTION, 90mm, 0.75BMT STEEL (SEE LGS SHOP DRAWINGS FOR ENGINEERING DETAILS/STUD SPACINGS)	AM150	No
WIN-R25	90mm GLASSWOOL BATTS, R2.5HD		No
WPB-M13P	RECESSED EDGE MULTIPURPOSE PLASTERBOARD (MOISTURE/FIRE RESISTANT), 13mm, JOINTED AND FINISHED FLUSH	PAINTED DULUX WASH & WEAR 'BUILDERS WHITE - MATTE'	No
WSK-VCVSG	150mm VINYL COVING - AS PER FLOOR SCHEDULE - PENCIL COVE/20mm COVE FILLET/32mm COVE FILLET	SAND GREY	No
EW02 EXTERNAL WALL - FC(9)/BATTEN(35)/STUD(90)/PLY(9) CSR5360			
WFC-EX2412-01	FIBRE CEMENT, EXPRESSWALL, PAINTED DOVER WHITE	PAINTED, DULUX WEATHERMAX 'DOVER WHITE'	
WBA-M35	BATTEN - METAL TOP HAT 0.75BMT, 35mm DEEP	ZINCALUME	No
WIN-K90	KINGSPAN AIRCELL 90, R0.2, 9mm (FLAMMABILITY INDEX <5)	NON-REFLECTIVE FACE TO EXTERIOR	
SMS-9075	LIPPED C SECTION, 90mm, 0.75BMT STEEL (SEE LGS SHOP DRAWINGS FOR ENGINEERING DETAILS/STUD SPACINGS)	AM150	No
IW01 INTERIOR WALL - MP-PBD(13)/STUD(90)/MP-PBD(13) - INSULATED CSR3017(C)			
WPB-MC13P	RECESSED EDGE MULTIPURPOSE PLASTERBOARD (MOISTURE/FIRE RESISTANT), 13mm, JOINTED AND FINISHED FLUSH	PAINTED DULUX WASH & WEAR 'BUILDERS WHITE - MATTE'	No
SMS-9075	LIPPED C SECTION, 90mm, 0.75BMT STEEL (SEE LGS SHOP DRAWINGS FOR ENGINEERING DETAILS/STUD SPACINGS)	AM150	No
WIN-R25	90mm GLASSWOOL BATTS, R2.5HD		No
WSK-VCVSG	150mm VINYL COVING - AS PER FLOOR SCHEDULE - PENCIL COVE/20mm COVE FILLET/32mm COVE FILLET	SAND GREY	No
IW02 INTERIOR WALL - MP-PBD(13)/STUD(90)/MP-PBD(13) - INSULATED CSR3232(C)			
WPB-MC13P	RECESSED EDGE MULTIPURPOSE PLASTERBOARD (MOISTURE/FIRE RESISTANT), 13mm, JOINTED AND FINISHED FLUSH	PAINTED DULUX WASH & WEAR 'BUILDERS WHITE - MATTE'	No
SMS-9075	LIPPED C SECTION, 90mm, 0.75BMT STEEL (SEE LGS SHOP DRAWINGS FOR ENGINEERING DETAILS/STUD SPACINGS)	AM150	No
WIN-R25	90mm GLASSWOOL BATTS, R2.5HD		No
WSK-VCVSG	150mm VINYL COVING - AS PER FLOOR SCHEDULE - PENCIL COVE/20mm COVE FILLET/32mm COVE FILLET	SAND GREY	No
IW03 INTERNAL WALL SKYLIGHT - STUD(90)/MP-PBD(13)			
WPB-MC13P	RECESSED EDGE MULTIPURPOSE PLASTERBOARD (MOISTURE/FIRE RESISTANT), 13mm, JOINTED AND FINISHED FLUSH	PAINTED DULUX WASH & WEAR 'BUILDERS WHITE - MATTE'	No
SMS-9075	LIPPED C SECTION, 90mm, 0.75BMT STEEL (SEE LGS SHOP DRAWINGS FOR ENGINEERING DETAILS/STUD SPACINGS)	AM150	No

WALL TYPE SCHEDULE - TAKE OFF									
TAG	DESCRIPTION	FIRE RESISTANCE LEVEL	ACOUSTICS		MANUF. SYSTEM NO.	QTY TAKE OFF			
			Rw	Rw+Ctr		HEIGHT	TOTAL LENGTH	AREA	QTY
EW01	EXTERNAL WALL - FC(9)/BATTEN(35)/STUD(90)/PLY(9) - INSULATED	--/-- (Non Load)	49	40	CSR5327(C)	4.000 m	21.5 m	43 m ²	2
EW01	EXTERNAL WALL - FC(9)/BATTEN(35)/STUD(90)/PLY(9) - INSULATED	--/-- (Non Load)	49	40	CSR5327(C)	4.000 m	38.3 m	77 m ²	2
EW02	EXTERNAL WALL - FC(9)/BATTEN(35)/STUD(90)/PLY(9)	--/-- (Non Load)	33	30	CSR5360	0.600 m	13.3 m	8 m ²	1
EW02	EXTERNAL WALL - FC(9)/BATTEN(35)/STUD(90)/PLY(9)	--/-- (Non Load)	33	30	CSR5360	1.080 m	13.3 m	14 m ²	1
EW02	EXTERNAL WALL - FC(9)/BATTEN(35)/STUD(90)/PLY(9)	--/-- (Non Load)	33	30	CSR5360	0.600 m	41.9 m	13 m ²	2
IW01	INTERIOR WALL - MP-PBD(13)/STUD(90)/MP-PBD(13) - INSULATED	--/-- (Non Load)	49	40	CSR3017(C)	2.700 m	3.8 m	5 m ²	2
IW01	INTERIOR WALL - MP-PBD(13)/STUD(90)/MP-PBD(13) - INSULATED	--/-- (Non Load)	49	40	CSR3017(C)	2.700 m	4 m	5 m ²	2
IW01	INTERIOR WALL - MP-PBD(13)/STUD(90)/MP-PBD(13) - INSULATED	--/-- (Non Load)	49	40	CSR3017(C)	2.700 m	2.1 m	6 m ²	1
IW01	INTERIOR WALL - MP-PBD(13)/STUD(90)/MP-PBD(13) - INSULATED	--/-- (Non Load)	49	40	CSR3017(C)	2.700 m	4.4 m	6 m ²	2
IW01	INTERIOR WALL - MP-PBD(13)/STUD(90)/MP-PBD(13) - INSULATED	--/-- (Non Load)	49	40	CSR3017(C)	2.700 m	9.5 m	9 m ²	3
IW01	INTERIOR WALL - MP-PBD(13)/STUD(90)/MP-PBD(13) - INSULATED	--/-- (Non Load)	49	40	CSR3017(C)	2.700 m	6.4 m	17 m ²	1
IW02	INTERIOR WALL - MP-PBD(13)/STUD(90)/MP-PBD(13) - INSULATED	--/-- (Non Load)	58	49	CSR3232(C)	2.700 m	4.2 m	6 m ²	2
IW02	INTERIOR WALL - MP-PBD(13)/STUD(90)/MP-PBD(13) - INSULATED	--/-- (Non Load)	58	49	CSR3232(C)	2.700 m	3.7 m	10 m ²	1
IW02	INTERIOR WALL - MP-PBD(13)/STUD(90)/MP-PBD(13) - INSULATED	--/-- (Non Load)	58	49	CSR3232(C)	2.700 m	10.7 m	29 m ²	1
IW03	INTERNAL WALL SKYLIGHT - STUD(90)/MP-PBD(13)	--/-- (Non Load)				0.656 m	5.4 m	0 m ²	8
IW03	INTERNAL WALL SKYLIGHT - STUD(90)/MP-PBD(13)	--/-- (Non Load)				0.656 m	10.3 m	1 m ²	8

WALL NOTES - COMMERCIAL

NCC CLAUSE	NOTES
GENERAL	A. FIRE/ACOUSTIC WALLS MUST BE BUILT IN ACCORDANCE WITH THE RELEVANT MANUFACTURERS SYSTEM BUILD-UPS AND INSTALLATION INSTRUCTIONS. SUBSTITUTION OF SPECIFIED MATERIALS FOR OTHER ELEMENTS IS STRICTLY NOT TO BE DONE WITHOUT NOTIFICATION & VERIFICATION OF DESIGN PROJECT LEAD.
GENERAL	A. WARNING: THE MANUFACTURER/BUILDER /SUB-CONTRACTORS MUST FOLLOW ALL DETAILS REGARDING ACTIVE AND PASSIVE FIRE SYSTEM INSTALL AND MUST MAKE SURE THEY ARE MEETING THEIR OBLIGATIONS UNDER NCC, RELEVANT AUSTRALIAN STANDARDS, MANUFACTURERS SYSTEM INSTALLATION GUIDES ETC. WHERE ANY DOUBTS ARISE, STOP WORK AND ASK!
C2D11	THERE ARE MINIMUM REQUIREMENTS REGARDING WALL LININGS & SARKING FIRE HAZARD PROPERTIES - MATERIALS THAT ARE SWAPPED OUT MUST NOT AFFECT THE MINIMUM REQUIREMENTS
C2D12	WHERE PRE-CAST CONCRETE WALLS ARE USED, THEY MUST BE DESIGNED AND INSTALLED IN COMPLIANCE WITH NCC VOL 1. SPECIFICATION 8
C2D14	ANCILLARY ELEMENTS MUST NOT BE FIXED TO EXTERNAL WALLS REQUIRED TO BE NON-COMBUSTIBLE UNLESS IT MEETS THE REQUIREMENTS OF THIS CLAUSE. ANY ADDITIONS MUST BE CONSIDERED UNDER THE NCC REQUIREMENTS
C3D8	WHERE A FIRE WALL IS NOTED ON THE DRAWINGS IT SHOULD BE CONSTRUCTED IN ACCORDANCE WITH NCC VOL. 1 SPECIFICATION 5
C4D3	WHERE A EXTERNAL WALL IS REQUIRED TO HAVE A FIRE RATING - ANY OPENING WITHIN 3m OF A SIDE OR REAR LOT BOUNDARY, WITHIN 6m OF A FRONT BOUNDARY OR WITHIN 6m OF ANOTHER BUILDING (EXCEPT CLASS 10) MUST BE PROTECTED
C4D15	ENSURE ALL PENETRATIONS THROUGH A FIRE OR ACOUSTIC RATED WALL MEET THE REQUIREMENT OF NCC VOL.1 SPECIFICATION 13: PENETRATION OF WALLS, FLOORS AND CEILINGS BY SERVICES, PARTICULARLY IN REGARDS TO OFFSET OF BACK TO BACK PENETRATIONS AND FIRE-STOPPING.
F1D6	WHERE A WALL IS INSTALLED ON A SLAB IN DIRECT CONTACT WITH THE GROUND. A DAMP PROOF COURSE MUST BE PROVIDED UNDER WALL FRAMES. THE DPC MUST MEET AS/NZS 2904 OR AS 3660.1
F3D3	SARKING TYPE MATERIAL USED FOR WEATHERPROOFING A WALL MUST COMPLY WITH AS 4200.1 & AS 4200.2
F3D5	AUTOCLAVED AERATED CONCRETE MUST COMPLY WITH AS 5146.3
F3D5	METAL WALL CLADDING & FLASHINGS MUST COMPLY WITH AS 1562.1
S26	ALL WATERPROOFING OF WALLS, WALL TO WALL JUNCTIONS AND WALL TO FLOOR JUNCTIONS MUST BE DONE IN ACCORDANCE WITH NCC VOL. 1. SPECIFICATION 26 AND AS 3740 WATERPROOFING STANDARD.



REV	DESCRIPTION	DATE	BY	CHK
H	INCORPORATED COMMENTS/ISSUED FOR APPROVAL	17/06/24	***	***



2 Percival Rd, Smithfield NSW 2164 | (02) 8718 2500
 This document and any of the documents information, ideas and concepts are the property of Fleetwood Australia and may not be used, copied or reproduced without express written permission. © Copyright Fleetwood Australia. All rights reserved. ABRN: 78 114 078 349

GENERAL NOTES

- ALL DIMENSIONS TO BE VERIFIED ON SITE PRIOR TO COMMENCEMENT OF WORKS.
- USE WRITTEN DIMENSIONS ONLY, DO NOT SCALE DRAWINGS.
- READ IN CONJUNCTION WITH OTHER DRAWINGS, SPECIFICATIONS & CONSULTANTS DOCUMENTATION.
- REFER ANY DISCREPANCIES IMMEDIATELY TO THE DESIGNER & AWAIT WRITTEN INSTRUCTION.

PROJECT NO.:
J005017

PROJECT STATUS
DESIGN DEVELOPMENT

PROJECT CLIENT
INNER WEST COUNCIL

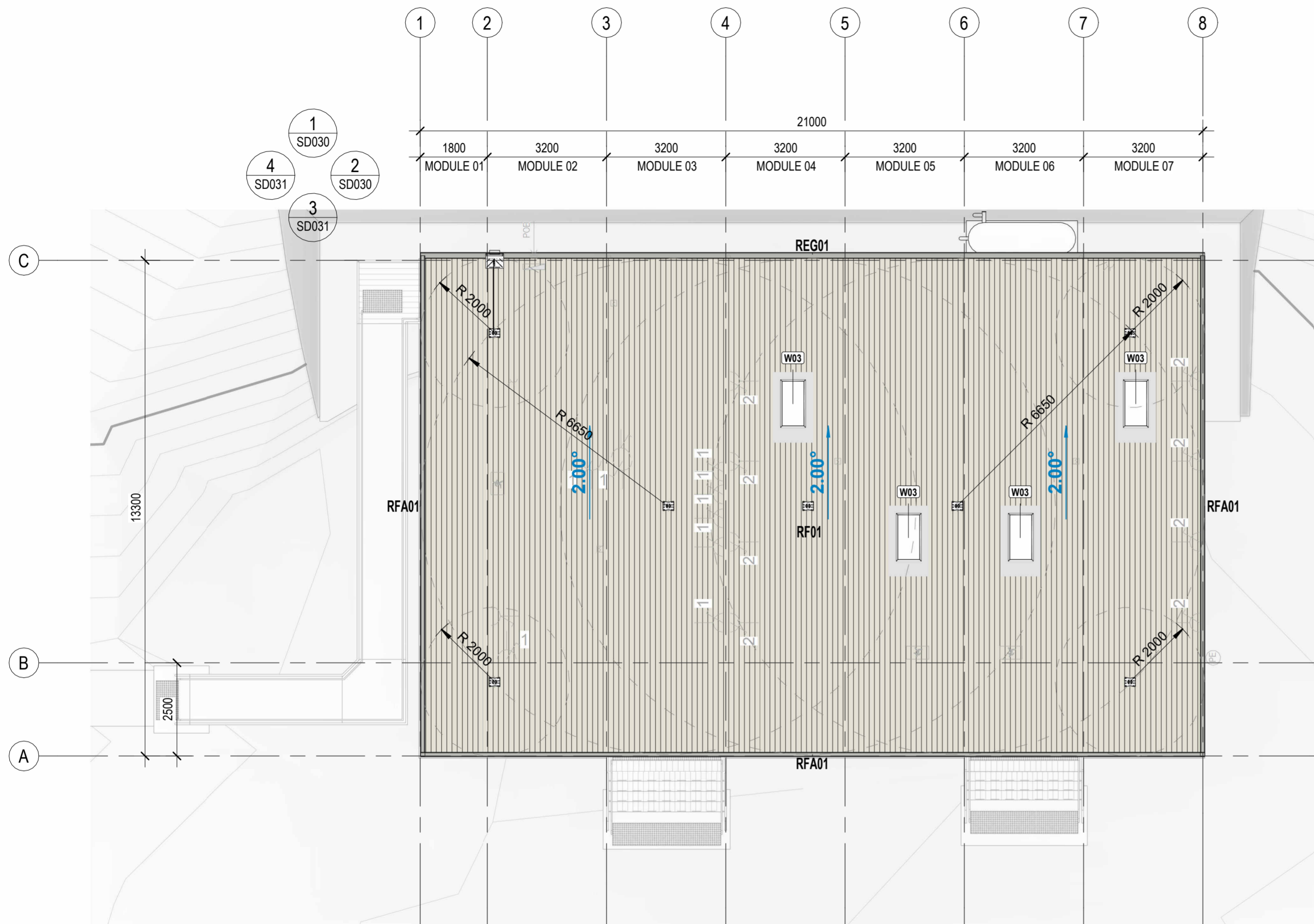
PROJECT:
LEICHHARDT OVAL NO. 2 AMENITIES

PROJECT ADDRESS
2 GLOVER AVENUE, LEICHHARDT NSW 2040

SHEET
WALL SCHEDULES

DESIGN DOCUMENTER: **KM**
 DESIGN LEAD: **MG**
 SCALE: **1:10**
 SIZE: **A2**
 REVISION: **H**

DRAWING NO.
A235



ROOF SCHEDULE			
TAG	MATERIAL: DESCRIPTION	MATERIAL: TREATMENT	AREA
RF01	TRIMDEK ROOF CLADDING - OFFWHITE/SURFMIST, 90mm PURLIN, R1.3 ROOF BLANKET		
RIN-R13	ROOF BLANKET, R1.3	REFLECTIVE FACE DOWN	278 m ²
RMC-TR42SM	ROOF CLADDING, TRIMDEK, 29mm, 0.42BMT	SURFMIST/OFFWHITE	278 m ²
SSP-C9011	STRUCTURAL STEEL ROOF PURLIN, LC9011	AM150	278 m ²

RAINWATER FLASHING SCHEDULE				
TAG	DESCRIPTION	MATERIAL: TREATMENT	LENGTH	QTY
REG-LYHR150SG	EAVES GUTTER, LYSAGHT 150mm HALF ROUND OR SIMILAR	SHALE GREY	21044	1
RFA-LYSHLSG	BARGE CAP - LYSAGHT SHEERLINE (OR SIMILAR)	SHALE GREY	47898	1

ROOF EQUIPMENT SCHEDULE			
TAG	MANUFACTURER	DESCRIPTION	QTY
RAL-LD402	SAYFA	GUTTER / PARAPET MOUNT ROOF LADDER SUPPORT BRACKET	1
RAN-AP135A	SAYFA	3SIXTY RAPID TOP MOUNT ROOF ANCHOR	7
RAS-AP115.2000	SAYFA	ROOF ANCHOR STROP - 2m	1

ROOF NOTES

ROOF FALL ARREST SYSTEM TO BE DESIGNED, SUPPLIED, AND INSTALLED IN ACCORDANCE WITH AS/NZS 1891.4, AND AS/ NZS 5532.
 ROOF DRAINAGE FOR COMMERCIAL PROJECTS SHALL BE DESIGNED IN ACCORDANCE WITH AS 3500.3, RESIDENTIAL PROJECTS SHALL USE THE ABCB GDO 2022 CALCULATOR
 ALL ROOFING WORKS MUST BE DONE IN ACCORDANCE WITH STATE WHS LEGISLATION AND CODES OF PRACTICE FOR SAFE WORK AT HEIGHT, AS WELL AS FWD SITE SAFE WORK METHOD STATEMENTS
 APPROPRIATE MEASURES MUST BE TAKEN DURING CONSTRUCTION TO CONTROL FLOW FROM DOWNPIPES TO PREVENT EROSION AND UNNECESSARY SEDIMENT RUN-OFF
 LOADS ON ROOF SHEET DURING CONSTRUCTION SHALL NOT EXCEED LOADS USED IN DESIGN OF THE CLADDING SYSTEM (GENERALLY THIS IS UNIFORM DISTRIBUTED LOAD: 0.25kPa AND CONCENTRATED ACTION: 1.1kN)
 FASTENING OF ROOF SHEET SHALL COMPLY WITH AS 1562.1 SECTION 4.4 AND MANUFACTURER'S INSTALLATION GUIDELINES.
 ALL ROOF SHEETING SHALL BE SUPPORTED AS NEAR TO THEIR ENDS AS PRACTICABLE, SHEET OVERHANG ON VALLEY GUTTERS SHALL NOT BE <100mm FROM EDGE OF VALLEY GUTTER
 CLADDING THAT IS LAPPED MUST BE LAPPED 200-300mm FOR ROOF PITCH <15°, 150-250mm FOR PITCH >15° WHERE ROOF SHEETING IS CUT TO ALLOW FOR PROJECTION THROUGH - THE SECTION OF CUT ROOF SHEET MUST BE STRUCTURALLY SUPPORTED
 PREPAINTED RAINWATER FLASHING, GUTTERS ETC SHALL BE A MINIMUM AM100, 0.42BMT AND G550 GRADE STEEL
 FLASHINGS SHALL BE FASTENED AS PER AS1562.1 SECTION 4.8.3 AND TABLE 4.2, AND PER MANUFACTURER'S INSTALL INSTRUCTIONS

NOTE:
 • FINISHES AND MATERIALS INDICATIVE ONLY;
 • TO BE CONFIRMED PRIOR TO CONSTRUCTION
 SUBJECT TO SECTION-J AND BCA COMPLIANCE

REV	DESCRIPTION	DATE	BY	CHK
H	INCORPORATED COMMENTS/ISSUED FOR APPROVAL	17/06/24	***	***
G	DESIGN DEVELOPMENT - ISSUED FOR BUILDING APPROVAL	06/06/24	OF	-
F	DESIGN DEVELOPMENT - ISSUED FOR CLIENT REVIEW/APPROVAL	15/05/24	KM	-

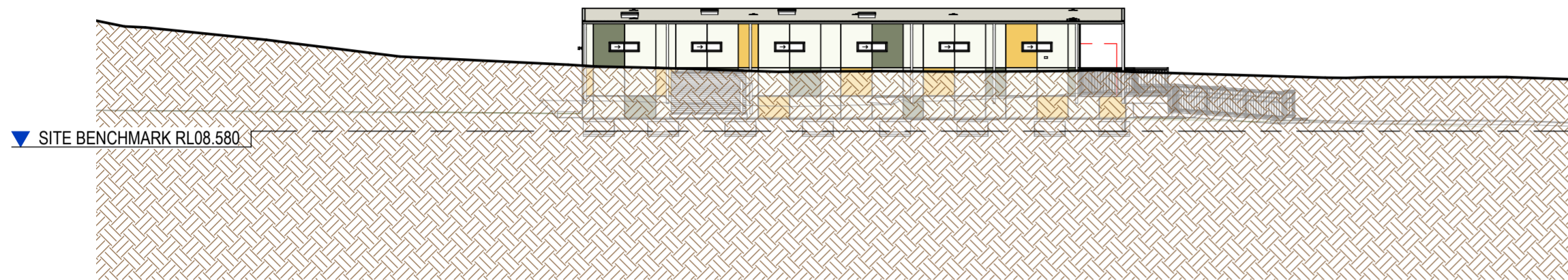


2 Percival Rd, Smithfield NSW 2164 | (02) 8718 2500
 This document and any of the documents information, ideas and concepts are the property of Fleetwood Australia and may not be used, copied or reproduced without express written permission. © Copyright Fleetwood Australia. All rights reserved. ADRN: 78 114 078 349
GENERAL NOTES
 1. ALL DIMENSIONS TO BE VERIFIED ON SITE PRIOR TO COMMENCEMENT OF WORKS.
 2. USE WRITTEN DIMENSIONS ONLY, DO NOT SCALE DRAWINGS.
 3. READ IN CONJUNCTION WITH OTHER DRAWINGS, SPECIFICATIONS & CONSULTANTS DOCUMENTATION.
 4. REFER ANY DISCREPANCIES IMMEDIATELY TO THE DESIGNER & AWAIT WRITTEN INSTRUCTION.

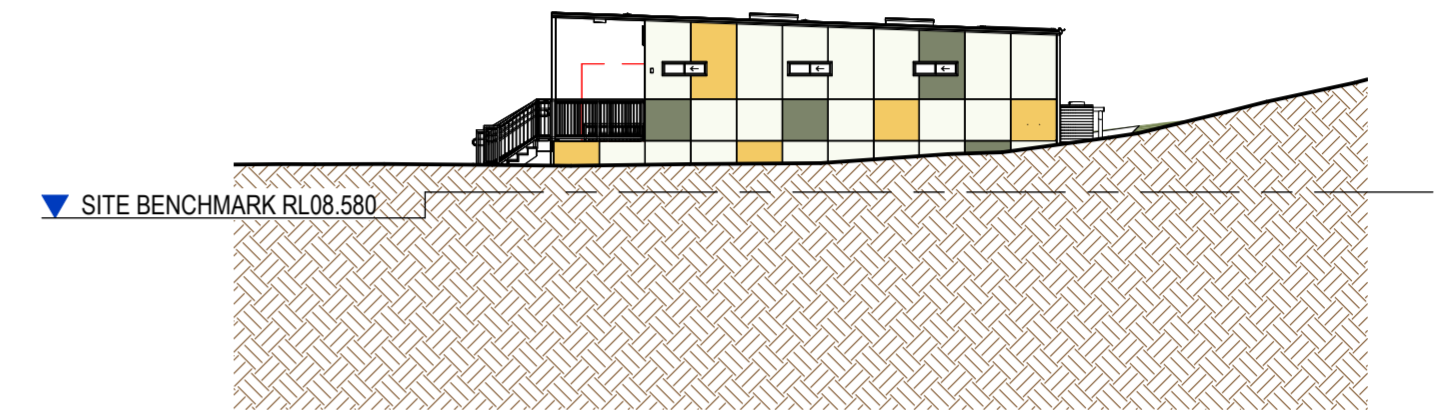
PROJECT NO.: J005017
 PROJECT STATUS: DESIGN DEVELOPMENT
 PROJECT CLIENT: INNER WEST COUNCIL

PROJECT: LEICHHARDT OVAL NO. 2 AMENITIES
 PROJECT ADDRESS: 2 GLOVER AVENUE, LEICHHARDT NSW 2040

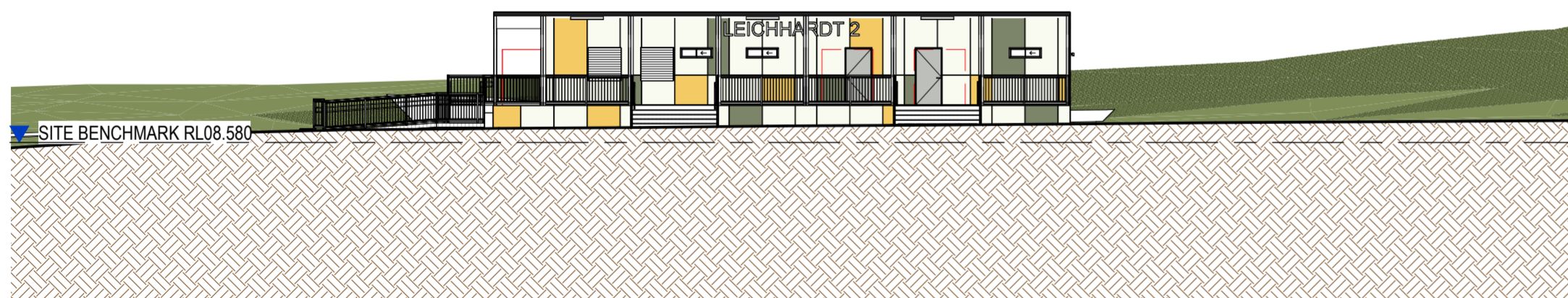
SHEET: ROOF PLAN
 DESIGN DOCUMENTER: KM
 DESIGN LEAD: MG
 SCALE: 1:100
 SIZE: A2
 DRAWING NO.: A250
 REVISION: H



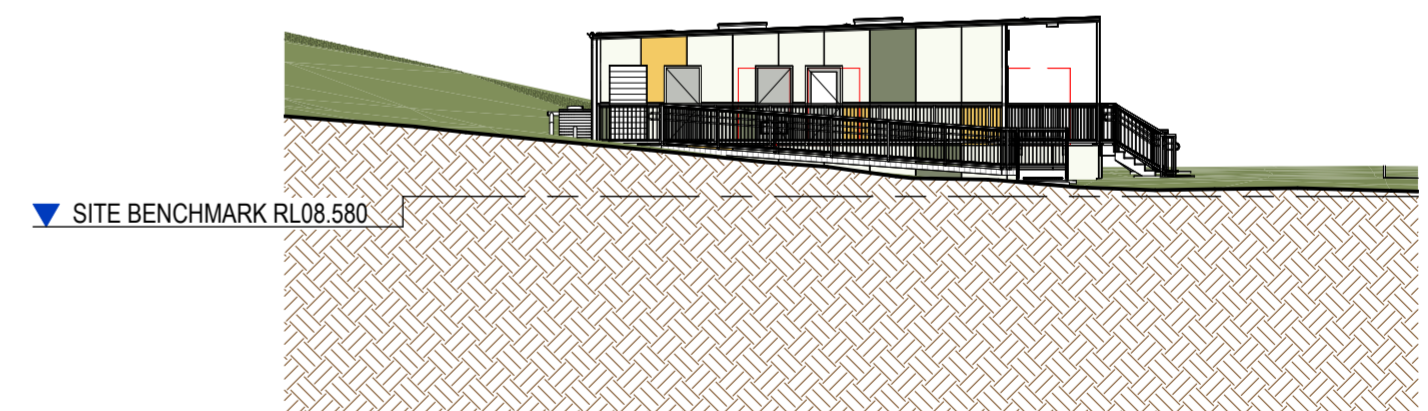
1 SITE ELEVATION 1
1 : 200



2 SITE ELEVATION 2
1 : 200



3 SITE ELEVATION 3
1 : 200



4 SITE ELEVATION 4
1 : 200

NOTE:
 • FINISHES AND MATERIALS INDICATIVE ONLY;
 • TO BE CONFIRMED PRIOR TO CONSTRUCTION
 SUBJECT TO SECTION-J AND BCA COMPLIANCE

REV	DESCRIPTION	DATE	BY	CHK
H	INCORPORATED COMMENTS/ISSUED FOR APPROVAL	17/06/24	***	***
G	DESIGN DEVELOPMENT - ISSUED FOR BUILDING APPROVAL	06/06/24	OF	-
F	DESIGN DEVELOPMENT - ISSUED FOR CLIENT REVIEW/APPROVAL	15/05/24	KM	-

FLEETWOOD AUSTRALIA

2 Percival Rd, Smithfield NSW 2164 | (02) 8718 2500
 This document and any of the documents information, ideas and concepts are the property of Fleetwood Australasia and may not be used, copied or reproduced without express written permission. © Copyright Fleetwood Australia. All rights reserved. ABRN: 78 114 078 349

GENERAL NOTES
 1. ALL DIMENSIONS TO BE VERIFIED ON SITE PRIOR TO COMMENCEMENT OF WORKS.
 2. USE WRITTEN DIMENSIONS ONLY, DO NOT SCALE DRAWINGS.
 3. READ IN CONJUNCTION WITH OTHER DRAWINGS, SPECIFICATIONS & CONSULTANTS DOCUMENTATION.
 4. REFER ANY DISCREPANCIES IMMEDIATELY TO THE DESIGNER & AWAIT WRITTEN INSTRUCTION.

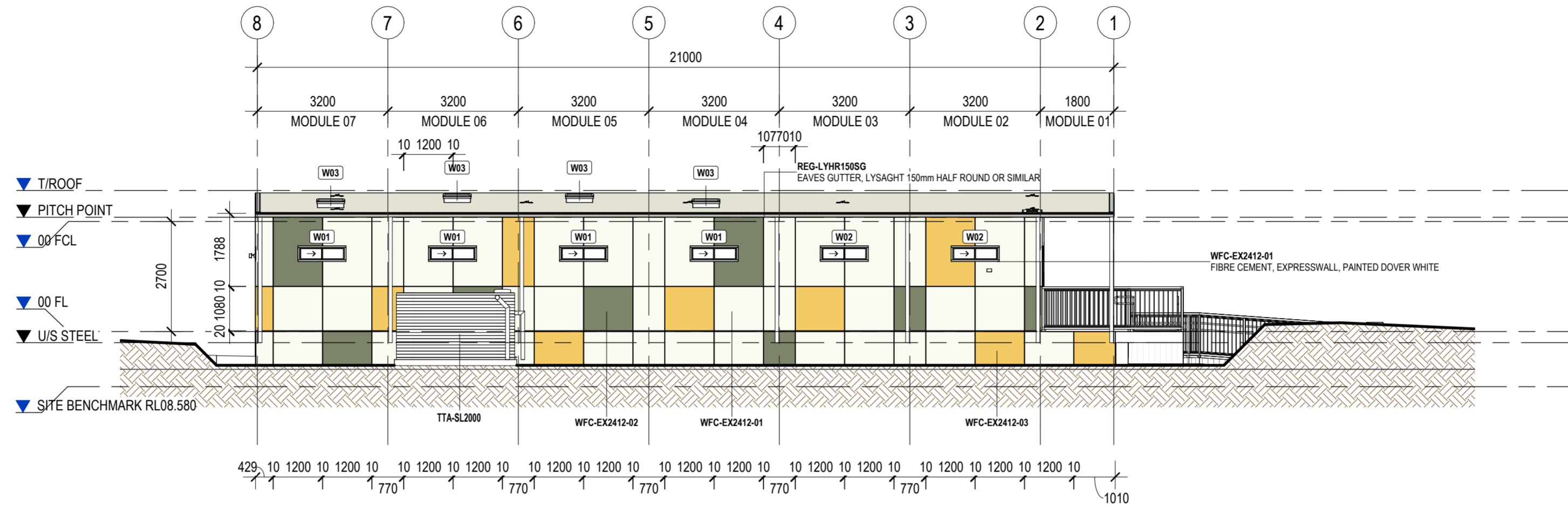
PROJECT NO.: J005017
 PROJECT STATUS: DESIGN DEVELOPMENT
 PROJECT CLIENT: INNER WEST COUNCIL

PROJECT: LEICHHARDT OVAL NO. 2 AMENITIES
 PROJECT ADDRESS: 2 GLOVER AVENUE, LEICHHARDT NSW 2040

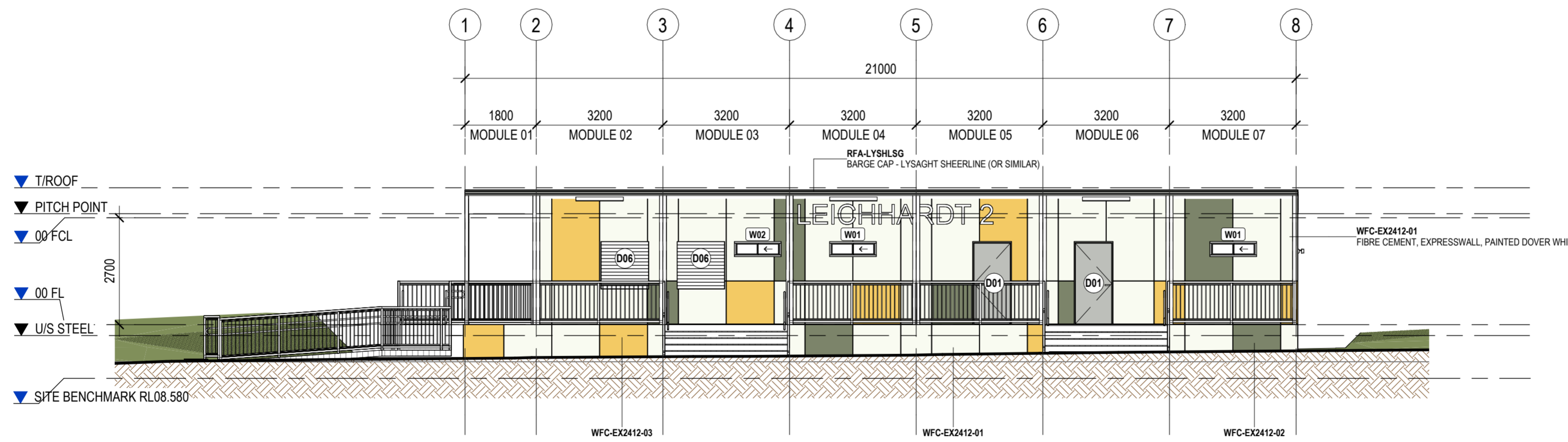
SHEET: SITE ELEVATIONS

DESIGN DOCUMENTER: KM
 DESIGN LEAD: MG
 SCALE: 1 : 200
 SIZE: A2
 DRAWING NO.: A300
 REVISION: H

MATERIAL SCHEDULE - ELEVATION	
TAG	DESCRIPTION
FCD-13723S	COMPOSITE TIMBER DECKING MODWOOD SILVERGUM 137x23mm (CONCEALED CLIPS)
RMC-TR42SM	ROOF CLADDING, TRIMDEK, 29mm, 0.42BMT
WFC-EX2412-01	FIBRE CEMENT, EXPRESSWALL, PAINTED DOVER WHITE
WFC-EX2412-02	FIBRE CEMENT, EXPRESSWALL, PAINTED PALE EUCALYPT
WFC-EX2412-03	FIBRE CEMENT, EXPRESSWALL, PAINTED PALE BUTTERCUP



1 ELEVATION 1
A200 1:100



3 ELEVATION 3
A200 1:100

NOTE:
 • FINISHES AND MATERIALS INDICATIVE ONLY;
 • TO BE CONFIRMED PRIOR TO CONSTRUCTION
 SUBJECT TO SECTION-J AND BCA COMPLIANCE

REV	DESCRIPTION	DATE	BY	CHK
H	INCORPORATED COMMENTS/ISSUED FOR APPROVAL	17/06/24	***	***
G	DESIGN DEVELOPMENT - ISSUED FOR BUILDING APPROVAL	06/06/24	OF	-
F	DESIGN DEVELOPMENT - ISSUED FOR CLIENT REVIEW/APPROVAL	15/05/24	KM	-



2 Percival Rd, Smithfield NSW 2164 | (02) 8718 2500
 This document and any of the documents information, ideas and concepts are the property of Fleetwood Australasia and may not be used, copied or reproduced without express written permission. © Copyright Fleetwood Australasia. All rights reserved. ABRN: 78 114 078 349

GENERAL NOTES
 1. ALL DIMENSIONS TO BE VERIFIED ON SITE PRIOR TO COMMENCEMENT OF WORKS.
 2. USE WRITTEN DIMENSIONS ONLY, DO NOT SCALE DRAWINGS.
 3. READ IN CONJUNCTION WITH OTHER DRAWINGS, SPECIFICATIONS & CONSULTANTS DOCUMENTATION.
 4. REFER ANY DISCREPANCIES IMMEDIATELY TO THE DESIGNER & AWAIT WRITTEN INSTRUCTION.

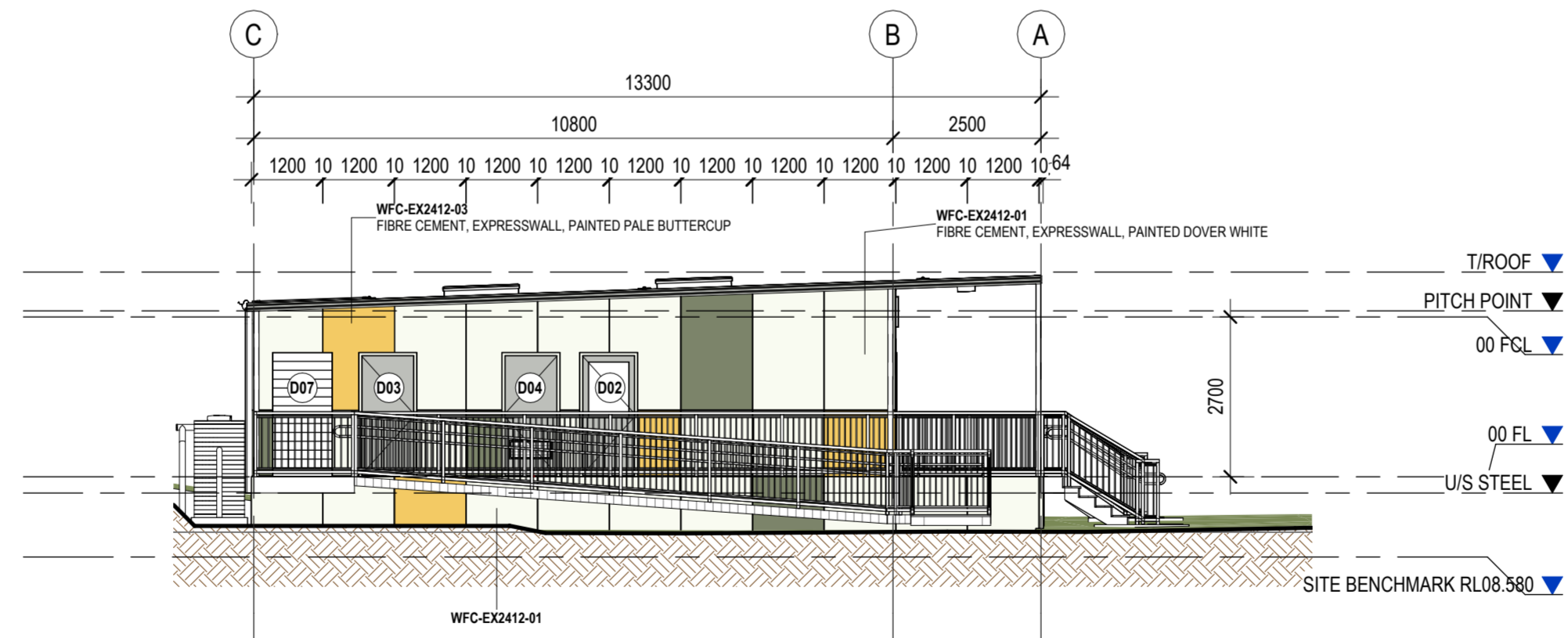
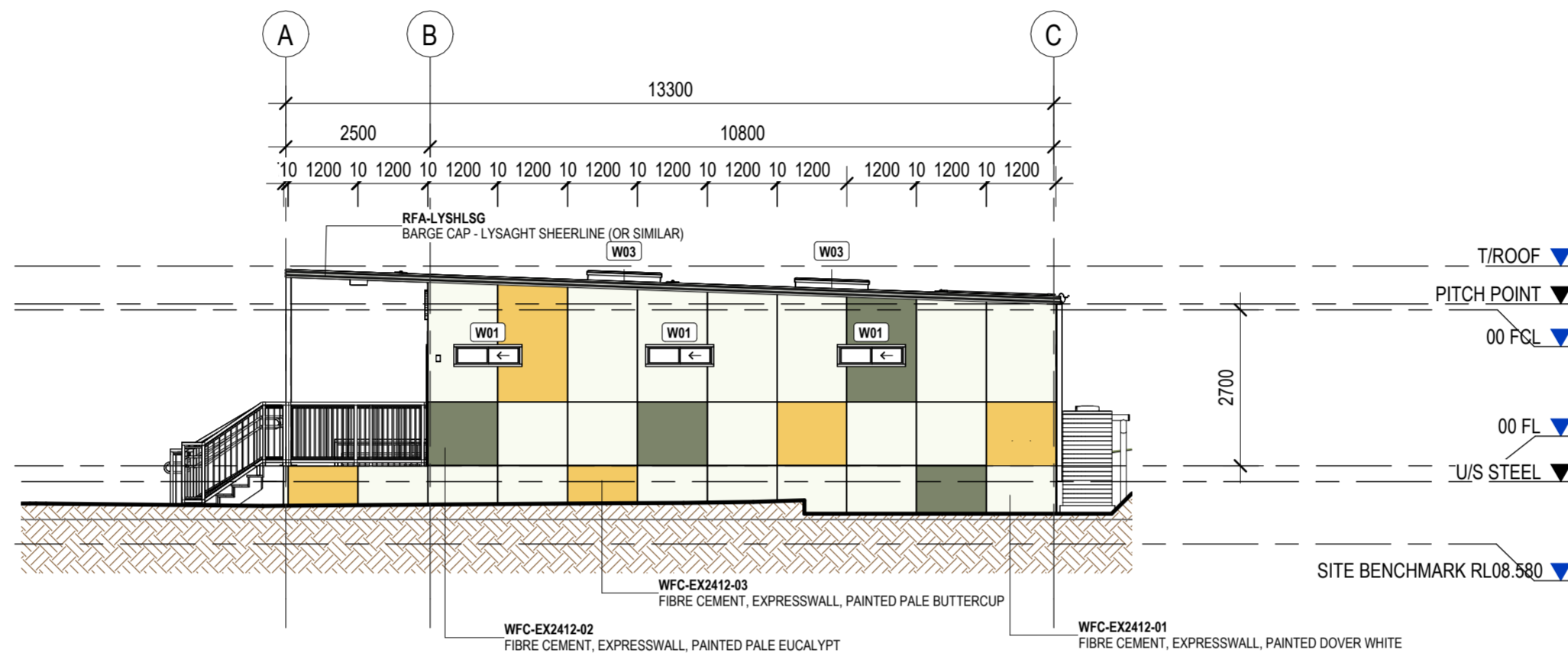
PROJECT NO.: J005017
 PROJECT STATUS: DESIGN DEVELOPMENT
 PROJECT CLIENT: INNER WEST COUNCIL

PROJECT: LEICHHARDT OVAL NO. 2 AMENITIES
 PROJECT ADDRESS: 2 GLOVER AVENUE, LEICHHARDT NSW 2040

SHEET: BUILDING ELEVATIONS

DESIGN DOCUMENTER: KM	DESIGN LEAD: MG	SCALE: 1:100	SIZE: A2
DRAWING NO.: A310		REVISION: H	

MATERIAL SCHEDULE - ELEVATION	
TAG	DESCRIPTION
FCD-13723S	COMPOSITE TIMBER DECKING MODWOOD SILVERGUM 137x23mm (CONCEALED CLIPS)
RMC-TR42SM	ROOF CLADDING, TRIMDEK, 29mm, 0.42BMT
WFC-EX2412-01	FIBRE CEMENT, EXPRESSWALL, PAINTED DOVER WHITE
WFC-EX2412-02	FIBRE CEMENT, EXPRESSWALL, PAINTED PALE EUCALYPT
WFC-EX2412-03	FIBRE CEMENT, EXPRESSWALL, PAINTED PALE BUTTERCUP



REV	DESCRIPTION	DATE	BY	CHK
H	INCORPORATED COMMENTS/ISSUED FOR APPROVAL	17/06/24	***	***
G	DESIGN DEVELOPMENT - ISSUED FOR BUILDING APPROVAL	06/06/24	OF	-
F	DESIGN DEVELOPMENT - ISSUED FOR CLIENT REVIEW/APPROVAL	15/05/24	KM	-

FLEETWOOD AUSTRALIA

41-55 Platinum Street, Crestmead QLD 4132 | (07) 3489 5000
 This document and any of the documents information, ideas and concepts are the property of Fleetwood Australasia and may not be used, copied or reproduced without express written permission. © Copyright Fleetwood Australasia. All rights reserved. AINL 78 114 078 349

GENERAL NOTES
 1. ALL DIMENSIONS TO BE VERIFIED ON SITE PRIOR TO COMMENCEMENT OF WORKS.
 2. USE WRITTEN DIMENSIONS ONLY, DO NOT SCALE DRAWINGS.
 3. READ IN CONJUNCTION WITH OTHER DRAWINGS, SPECIFICATIONS & CONSULTANTS DOCUMENTATION.
 4. REFER ANY DISCREPANCIES IMMEDIATELY TO THE DESIGNER & AWAIT WRITTEN INSTRUCTION.

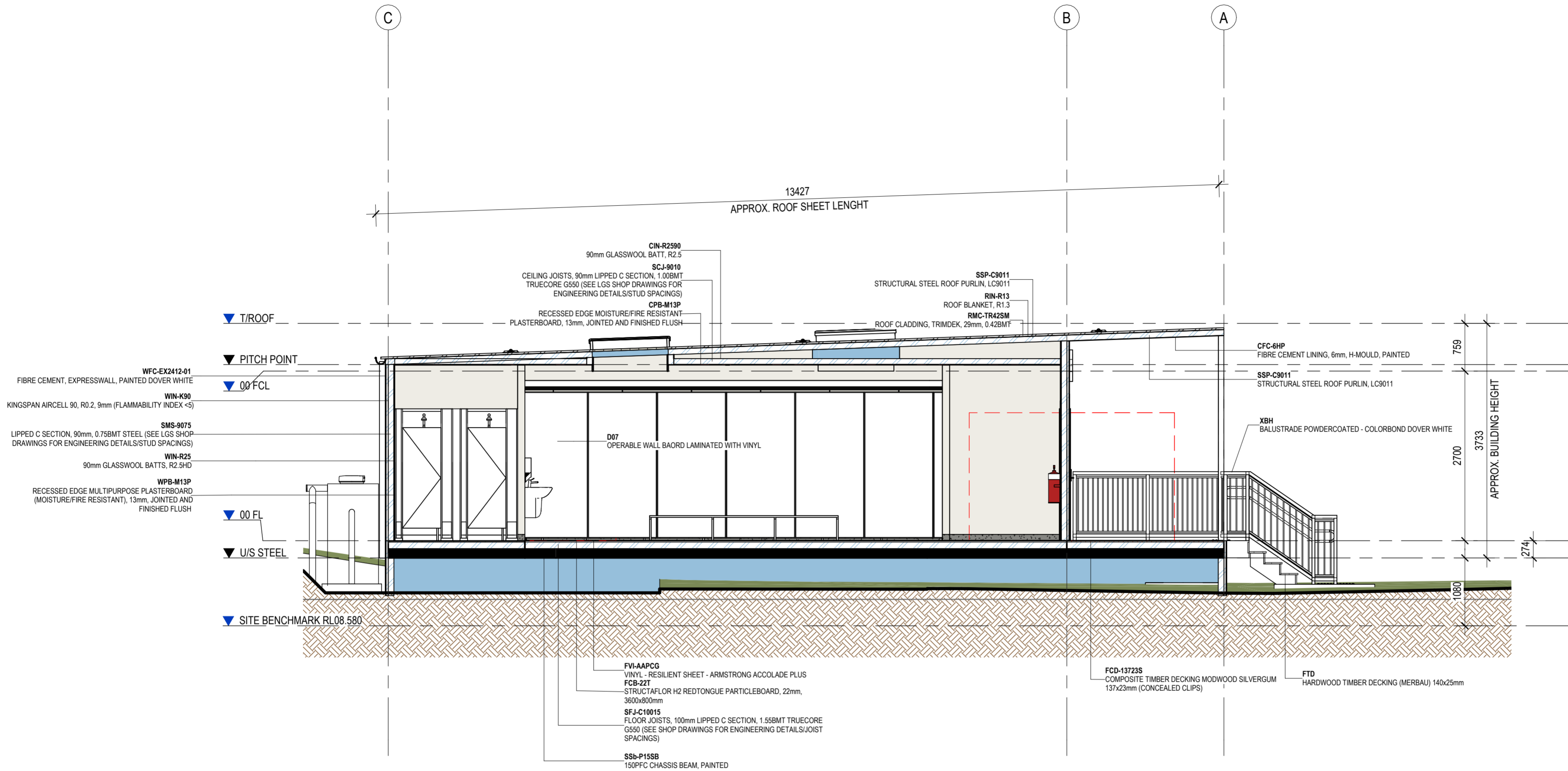
PROJECT NO.: J005017
 PROJECT STATUS: DESIGN DEVELOPMENT
 PROJECT CLIENT: INNER WEST COUNCIL

PROJECT: LEICHHARDT OVAL NO. 2 AMENITIES
 PROJECT ADDRESS: 2 GLOVER AVENUE, LEICHHARDT NSW 2040

SHEET: BUILDING ELEVATIONS

DESIGN DOCUMENTER: Author
 DESIGN LEAD: Checker
 SCALE: 1:100
 SIZE: A2
 REVISION: H

DRAWING NO.: A311



1 BUILDING SECTION A - A
A200 1 : 50

NOTE:
 • FINISHES AND MATERIALS INDICATIVE ONLY;
 • TO BE CONFIRMED PRIOR TO CONSTRUCTION
 SUBJECT TO SECTION-J AND BCA COMPLIANCE

REV	DESCRIPTION	DATE	BY	CHK
H	INCORPORATED COMMENTS/ISSUED FOR APPROVAL	17/06/24	***	***
G	DESIGN DEVELOPMENT - ISSUED FOR BUILDING APPROVAL	06/06/24	OF	-
F	DESIGN DEVELOPMENT - ISSUED FOR CLIENT REVIEW/APPROVAL	15/05/24	KM	-

FLEETWOOD AUSTRALIA

2 Percival Rd, Smithfield NSW 2164 | (02) 8718 2500
 This document and any of the documents information, ideas and concepts are the property of Fleetwood Australia and may not be used, copied or reproduced without express written permission. © Copyright Fleetwood Australia. All rights reserved. ADRN: 78 114 078 349

GENERAL NOTES
 1. ALL DIMENSIONS TO BE VERIFIED ON SITE PRIOR TO COMMENCEMENT OF WORKS.
 2. USE WRITTEN DIMENSIONS ONLY, DO NOT SCALE DRAWINGS.
 3. READ IN CONJUNCTION WITH OTHER DRAWINGS, SPECIFICATIONS & CONSULTANTS DOCUMENTATION.
 4. REFER ANY DISCREPANCIES IMMEDIATELY TO THE DESIGNER & AWAIT WRITTEN INSTRUCTION.

PROJECT NO.: J005017
 PROJECT STATUS: DESIGN DEVELOPMENT
 PROJECT CLIENT: INNER WEST COUNCIL

PROJECT: LEICHHARDT OVAL NO. 2 AMENITIES
 PROJECT ADDRESS: 2 GLOVER AVENUE, LEICHHARDT NSW 2040

SHEET: BUILDING SECTIONS

DESIGN DOCUMENTER: KM
 DESIGN LEAD: MG
 SCALE: 1 : 50
 SIZE: A2
 REVISION: H

DRAWING NO. A350