

# 302461: GODDARD STREET, AT KING STREET, NEWTOWN

## PROPOSED CONTINUOUS FOOTPATH TREATMENT

### GENERAL NOTES

- DURING CONSTRUCTION THE WORK IS TO BE SIGNPOSTED AND MARKED TO THE REQUIREMENTS OF AS1742.2-1994 AND AS1742.3-2022 'TRAFFIC CONTROL DEVICES FOR WORKS ON ROADS'.
- ALL WORK IS TO BE CARRIED OUT IN ACCORDANCE WITH COUNCIL'S TECHNICAL SPECIFICATION (AUSSPEC) AND TO BEST PRACTICE STANDARDS AND TO THE SATISFACTION OF COUNCIL'S MANAGER OF ENGINEERING.
- ALL RESIDENTS AFFECTED BY THE PROPOSED WORKS SHOULD BE NOTIFIED AT LEAST 7 WORKING DAYS BEFORE THE COMMENCEMENT OF ROADWORKS.
- EXISTING SURFACE FITTINGS OF THE SERVICES SHALL BE ADJUSTED AS NECESSARY TO THE REQUIREMENTS OF THE RELEVANT AUTHORITY.
- SUITABLE VEHICULAR ACCESS SHALL BE MAINTAINED TO EACH LOT OR ALTERNATIVE ARRANGEMENTS MADE WITH THE OWNERS.
- WORK ONLY PERMITTED TO BE CARRIED OUT BETWEEN THE HOURS OF 9:30am AND 2:30pm MONDAY TO FRIDAY AND 7am TO 5pm SATURDAY. NO WORK PERMITTED ON SUNDAYS.
- ALL SERVICES TO BE CHECKED FOR LEVEL AND LOCATION PRIOR TO COMMENCEMENT OF WORKS.
- ALL SERVICES AFFECTED BY NEW WORK TO BE ADJUSTED AS REQUIRED TO SUIT. NO SERVICE SURFACE FITTINGS ARE TO BE COVERED.
- THE LOCATION OF UNDERGROUND SERVICES AND HOUSE CONNECTIONS HAVE NOT BEEN SHOWN ON THIS PLAN AND MUST BE VERIFIED ON-SITE BY THE CONTRACTOR WITH REPRESENTATIVES FROM EACH OF THE UTILITY AUTHORITIES. CONTACT DIAL BEFORE YOU DIG.
- EXISTING SIGNS TO REMAIN UNLESS OTHERWISE NOTED. WHEREVER FOOTPATH RECONSTRUCTION IS SPECIFIED, REMOVE SIGN POSTS AND STORE TO BE REINSTALLED FOLLOWING DEMOLITION WORKS.
- ALL LINEMARKING AND RRP'S REMOVED OR AFFECTED DURING THE COURSE OF THE WORKS IS TO BE REINSTATED UNLESS NOTED OTHERWISE. ALL LINEMARKING IS TO COMPLY WITH RMS SPECIFICATION R141 - 'PAVEMENT MARKING' AND TO BE TERMOPLASTIC TYPE AND INCLUDE PLASTIC BEADS IN ACCORDANCE WITH RTA SPECIFICATION 3357 AND 3353 RESPECTIVELY. ALL RRP'S TO COMPLY WITH RTA SPECIFICATION R62. ALL COLOUR ROAD MARKINGS TO COMPLY WITH RTA R110.
- THE CONTRACTOR SHALL ENSURE THAT ALL EXISTING SURROUNDING AREAS NOT REQUIRED TO BE REPLACED OR RESET AS PART OF THE WORKS SHALL NOT BE DAMAGED DURING THE COURSE OF THE WORKS.
- INSPECTIONS ARE REQUIRED AT THE FOLLOWING STAGES AND AS OTHERWISE DIRECTED BY THE MANAGER OF ENGINEERING:  
CONCRETE WORKS  
(i) EXCAVATION COMPLETED  
(ii) FORMWORK AND REINFORCEMENT SET  
(iii) CONCRETE FORMED AND CURED
- LINEMARKING AND SIGNPOSTING TO BE INSTALLED AS SOON AS PRACTICABLE.
- KERB FACES OF ALL ISLANDS TO BE PAINTED WHITE AND TO INCLUDE GLASS BEADS IN ACCORDANCE WITH RMS SPECIFICATION No. 3353.
- USE CAUTION TO PRESERVE HERITAGE LISTED STREET NAME PLAQUES EMBEDDED IN FOOTPATH WHEN CONSTRUCTION FOOTPATHS AND KERB RAMPS (IF SHOWN). NO STATE SURVEY MARKS ARE TO BE REMOVED PRIOR TO CONSULTING WITH COUNCIL'S SURVEYOR.
- ALL TRAFFIC SIGNS TO COMPLY WITH RMS QA SPECIFICATION R65 AND TO BE OF HIGH INTENSITY CLASS 1 UNLESS OTHERWISE NOTED IN THE SIGNPOSTING SCHEDULE OR PLAN.
- EXISTING LINEMARKING IS TO BE REMOVED BY GRINDING WHERE NEW LINEMARKING IS REQUIRED OR PROVIDED.
- ALL SIGNPOSTING ARE TO BE ERRECT USING V-NOTCH INSERTS EMBEDDED INTO CONCRETE (OR SIMILAR AS APPROVED BY COUNCIL).
- ALL CONCRETE ELEMENTS TO BE OF 25 MPa UNLESS OTHERWISE STATED.

**NOTE**  
CONTRACTOR TO REINSTATE ALL KERB & GUTTER, ROAD PAVEMENT AND FOOTPATHS AFFECTED BY WORKS TO INNER WEST COUNCIL STANDARD AND TO THE SATISFACTION OF THE MANAGER, ENGINEERING.

**NOTE**  
CONTRACTOR TO LOCATE ALL HOUSE SERVICES (GAS, WATER) PRIOR TO CONSTRUCTION. SERVICES TO BE LOWERED AS REQUIRED.

**NOTE**  
ALL SIGNS AND LINES TO REMAIN UNLESS OTHERWISE NOTED.

**NOTE**  
WATER, SEWER, TELSTRA & ELECTRICITY SERVICES IN VICINITY OF WORKS. CONTRACTOR TO CONTACT SYDNEY WATER, TELSTRA & ENERGY AUSTRALIA PRIOR TO EXCAVATION.

**NOTE**  
SURFACE FITTINGS OF UNDERGROUND SERVICES ARE TO FINISH FLUSH WITH THE NEW ROAD SURFACE.

### EROSION AND SEDIMENT CONTROL

- GENERAL MEASURES
  - STOCKPILES SHALL BE CONFINED TO ONE CENTRAL AREA WHERE POSSIBLE.
  - EROSION CONTROL MEASURES TO BE IN PLACE PRIOR TO COMMENCEMENT OF ANY CONSTRUCTION WORK. MEASURES ARE APPLIED TO PROTECT ADJOINING PROPERTIES FROM EROSION AND SILT DAMAGE.
  - EROSION CONTROL MEASURES NOT BE REMOVED UNTIL CONSTRUCTION IS COMPLETED AND SITE HAS BEEN REHABILITATED.
  - REHABILITATION INCLUDES COMPLETION OF ALL CONSTRUCTION WORK AND LANDSCAPING, SEEDING OR TURFING OF ALL BATTERS AND FILL AREAS.
  - PIPED DRAINAGE NETWORKS SHOULD BE INSTALLED AND CONNECTED AS EARLY AS POSSIBLE.
  - ALL AREAS NOT SUBJECT TO CONSTRUCTION WORKS SHALL BE RETAINED FREE FROM DISTURBANCE OR DAMAGE DURING THE CURRENCY OF THE CONTRACT. SHOULD THESE AREAS BECOME DISTURBED OR DAMAGED, THEY SHALL BE RE-INSTATED BY THE CONTRACTOR.
  - ALL AREAS NOT SUBJECT TO CONSTRUCTION WORKS SHALL BE RETAINED FREE FROM DISTURBANCE OR DAMAGE DURING THE CURRENCY OF THE CONTRACT. SHOULD THESE AREAS BECOME DISTURBED OR DAMAGED, THEY SHALL BE RE-INSTATED BY THE CONTRACTOR AT NO COST TO THE PRINCIPAL.
- STABILISATION OF DISTURBED AREAS
  - STABILISATION OF DISTURBED AREAS SHALL BE IN ACCORDANCE WITH COUNCIL'S SPECIFICATION FOR GRASSING AND/OR SPECIFICATION FOR LANDSCAPE WORKS. THE FOLLOWING SHALL BE APPLIED FOR THE CONTROL OF EROSION AND SEDIMENTATION:
  - (a) STABILISATION OF DENUDED AREAS SHALL COMMENCE AS SOON AS POSSIBLE AFTER THE AREAS HAVE BEEN DISTURBED.
  - (b) ALL STABILISATION MEASURES SHALL BE UNDERTAKEN PRIOR TO THE END OF THE MAINTENANCE PERIOD.
- MAINTENANCE
  - ALL SEDIMENT AND EROSION CONTROL DEVICES SHALL BE MAINTAINED IN A SATISFACTORY WORKING ORDER THROUGHOUT THE CONTRACT, MAINTENANCE AND DEFECTS LIABILITY PERIODS OR UNTIL SUCH EARLIER TIME AS THE AREA HAS BEEN STABILISED AND THE SUPERINTENDENT DIRECTS THAT THE DEVICE BE REMOVED.
  - THE CONTRACTOR SHALL INSPECT ALL DEVICES AFTER EACH STORM FOR STRUCTURAL DAMAGE OR CLOGGING BY SILT AND OTHER DEBRIS AND MAKE PROMPT REPAIRS OR REPLACEMENT.
- SEDIMENT CONTROL DEVICES (S.C.D)
  - DEVICES SHALL BE CONSTRUCTED AT INLETS TO STORMWATER SYSTEMS TO TRAP THE SEDIMENT IN RUNOFF. SECTIONS 11.3.02/03/04/06 OF THE N.S.W DEPARTMENT OF HOUSING CONSTRUCTION SPECIFICATION, 1989 EDITION, SHALL APPLY.

### DRAWING SCHEDULE

Drawing Number	Rev	Date	Drawing Description
3051-02-01	F	JULY 2020	COVER SHEET, GENERAL NOTES & DRAWING SCHEDULE
3051-02-02	F	JULY 2020	EXISTING SURVEY & SERVICES PLAN
3051-02-03	F	JULY 2020	DEMOLITION & PROTECTION PLAN
3051-02-04	F	JULY 2020	CIVIL PLAN
3051-02-05	F	JULY 2020	MATERIALS & FINISHES PLAN
3051-02-06	F	JULY 2020	SETOUT PLAN & LONGITUDINAL SECTIONS - 'CL1'
3051-02-07	F	JULY 2020	SETOUT PLAN & LONGITUDINAL SECTIONS - 'CL2'
3051-02-08	F	JULY 2020	SETOUT PLAN & LONGITUDINAL SECTIONS - 'CL3'
3051-02-09	F	JULY 2020	RAISED THRESHOLD SETOUT DETAILS
3051-02-10	F	JULY 2020	CROSS SECTIONS- ACROSS 'CL1'
3051-02-11	G	MAY 2021	SIGNAGE & LINEMARKING PLAN

### IWC COUNCIL STANDARDS

REFERENCE IN DWG	PLAN NO	Drawing Description
3051-02-12	D10	KERB STORMWATER OUTLETS
3051-02-13	E1	SEDIMENT & EROSION CONTROL PLAN
3051-02-14	F2	100mm CONCRETE PATH
3051-02-15	F7	PAVED FOOTPATH
3051-02-16	R1	STANDARD KERB PROFILES
3051-02-17	R3	VEHICLE CROSSING & LAYBACK DETAILS
3051-01-18	N/A	RAISED THRESHOLD DETAILS (NON-STANDARD)

### CONCRETE

- ALL WORKSMANSHIP AND MATERIALS SHALL BE IN ACCORDANCE WITH AS3600 CURRENT EDITION WITH AMENDMENTS EXCEPT WHERE VARIED BY THE CONTRACT DOCUMENTS.
- CONCRETE QUALITY

ELEMENT	SLUMP	MAX AGGREGATE SIZE	CEMENT TYPE	CEMENT GRADE
ALL	80mm	20mm	GP	25MPa

NO ADMIXTURES SHALL BE USED WITHOUT THE APPROVAL OF THE ENGINEER.

- CLEAR CONCRETE COVER TO REINFORCEMENT SHALL BE AS FOLLOWS UNLESS OTHERWISE SHOWN-

ELEMENT	SURFACE OF MEMBER IN INTERIOR ENVIRONMENT	SURFACE OF MEMBER IN ABOVE GROUND EXTERIOR ENVIRONMENT	SURFACE OF MEMBER IN CONTACT WITH GROUND	SURFACE OF MEMBER IN WATER
ALL	35	45	55	75

#### NOTE:

- COVER MAY BE REDUCED BY 10mm IF THE SURFACE IS PROTECTED BY A DAMP-PROOF MEMBRANE.
- SLABS EXPOSED TO CORROSIVE VAPOURS, CORROSIVE GROUND WATER, SEA WATER, OR SPRAY ARE TO HAVE REINFORCEMENT COVER AS NOTED ON THE DRAWINGS.
- SIZE OF CONCRETE ELEMENTS DO NOT INCLUDE THICKNESS OF APPLIED FINISHES.
- CONSTRUCTION JOINTS WHERE NOT SHOWN SHALL BE LOCATED TO THE APPROVAL OF THE ENGINEER.
- BEAM DEPTHS ARE WRITTEN FIRST AND INCLUDE SLAB THICKNESS IF ANY.

### SIGNPOSTING SCHEDULE

SIGN NO	SIZE (Mm)	QUANTITY	LOCATION
R2-10	600 X 600	1	REFER TO SIGNAGE & LINEMARKING PLAN ON DWG 3051-02-11
W3-4	600 X 600	1	
W5-10	600 X 600	1	
W8-2	600 X 600	1	

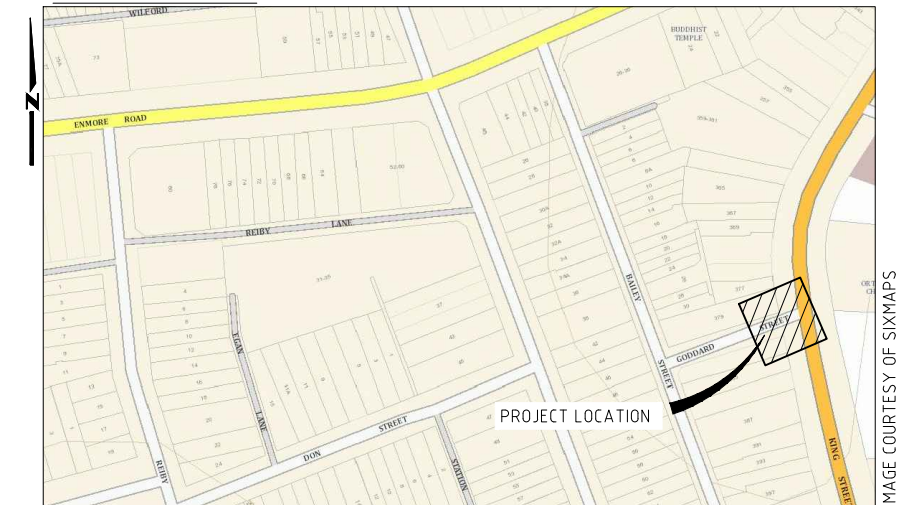
### LINEMARKING SCHEDULE

LINE TYPE	QUANTITY	LOCATION
"LOOK" PAVEMENT MARKING	2	REFER TO SIGNAGE & LINEMARKING PLAN ON DWG 3051-02-11
PIANO KEY LINEMARKING	5.20m	

### MATERIALS SCHEDULE

MATERIAL	QUANTITY
TGSI	1.62mm <sup>2</sup>
CONCRETE PAVERS- BANDING (MIN. 65mm THICK)	13.87m <sup>2</sup>
CONCRETE PAVERS- INFILL (MIN. 65mm THICK)	45.62m <sup>2</sup>
CONCRETE PAVERS- TRAFFICABLE INFILL (80mm THICK)	11.1m <sup>2</sup>

### LOCALITY PLAN



10 Regent Street  
Chippendale NSW 2008

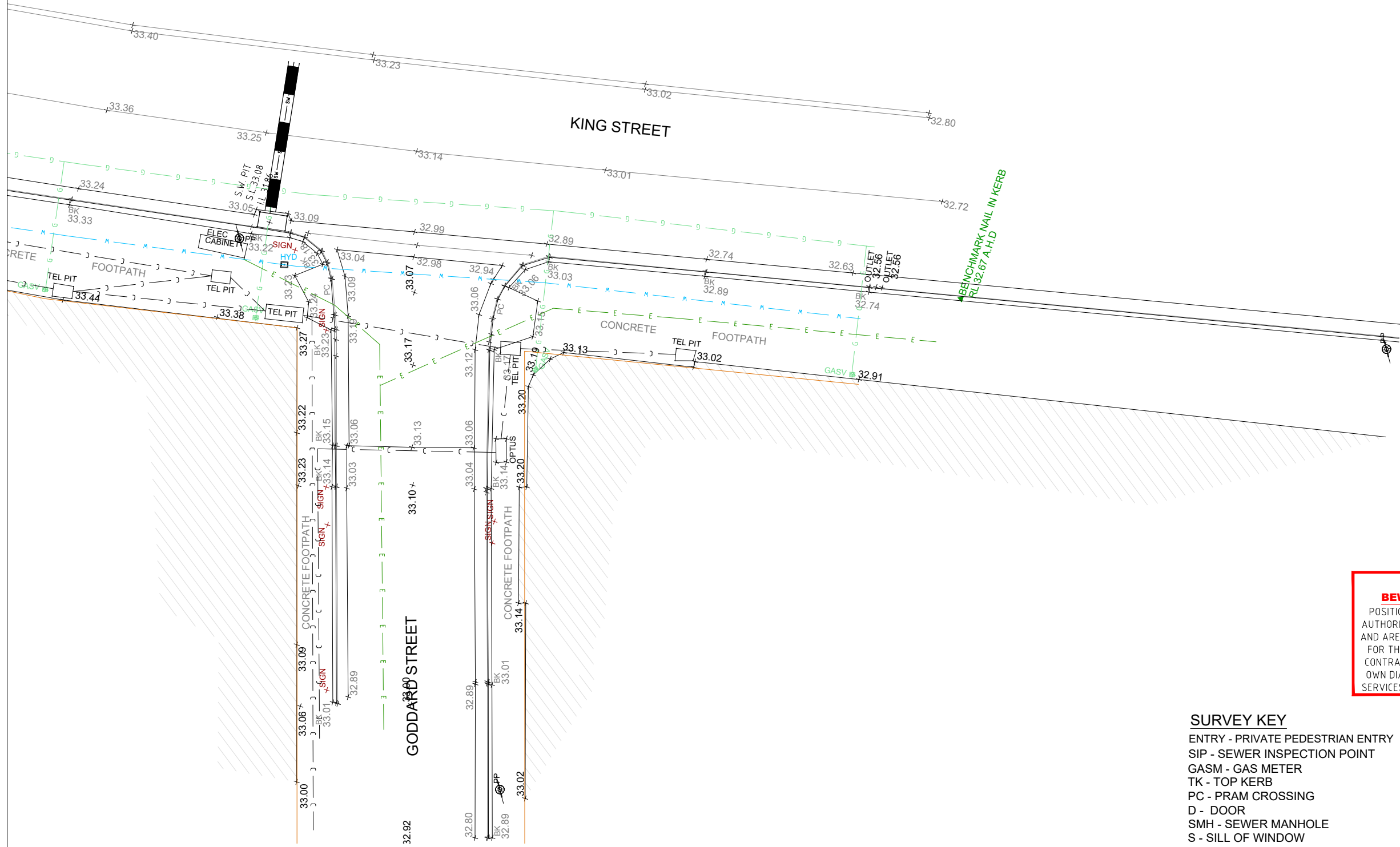
p 02 9282 9900  
f 02 9282 9277

**COMPLETE**

**IMPORTANT**  
STATE SURVEY MARKS TO REMAIN IN TACT AT ALL TIMES.

www.completeurban.com.au

CHECKED & APPROVED 	SURVEYED & DRAFTED BEYOND MEAS. MARCH 20	TRAFFIC COMMITTEE APPROVED 	STANDARDS OR GUIDELINES REFERRED TO • TDT 2011/01a • 1742.13-2009 • 1742.10-2009	S.R.A. / SURV. GEN. R.T.A. A.G.L. / SHELL PIPELINES SYDNEY WATER TELSTRA / OPTUS SYDNEY ELECTRICITY NOTICE OF ENTRY KERB & GUTTER	SERVICES AFFECTED TELSTRA / OPTUS STORM WATER WATER GAS ELEC. CABLES RAILCORP	QUANTITIES	NOTICES DATE	SERVICES COMMUNICATIONS GAS SEWER WATER RMS AUSGRID DRAINAGE PIPE	DATUM A. H. D.	SCALES AS SHOWN	AMEND DATE DESCRIPTION APPROV.	PROJECT NO. 302461	SHEET NO. 01
APPROVED FOR CONSTRUCTION 	DESIGNED BS APRIL 20	DRAWN BS APRIL 20										INNER WEST COUNCIL GODDARD STREET AT KING STREET, NEWTOWN PROPOSED CONTINUOUS FOOTPATH TREATMENT CIVIL PLAN	
												PLAN NO. 10134	CAD FILE 3051-02-01.dwg



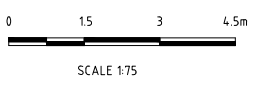
**! WARNING !**  
**BEWARE OF UNDERGROUND SERVICES**  
 POSITION OF SERVICE LINES ARE TAKEN FROM RELEVANT AUTHORITY RECORDS OBTAINED FROM DIAL BEFORE YOU DIG AND ARE APPROXIMATE ONLY. NO RESPONSIBILITY IS TAKEN FOR THE ACCURACY OF THE INFORMATION SUPPLIED. THE CONTRACTOR IS TO ENSURE THAT THEY UNDERTAKE THEIR OWN DIAL BEFORE YOU DIG PROCEDURES AND LOCATE ALL SERVICES ACCURATELY PRIOR TO COMMENCEMENT OF WORK.

- SURVEY KEY**  
 ENTRY - PRIVATE PEDESTRIAN ENTRY  
 SIP - SEWER INSPECTION POINT  
 GASM - GAS METER  
 TK - TOP KERB  
 PC - PRAM CROSSING  
 D - DOOR  
 SMH - SEWER MANHOLE  
 S - SILL OF WINDOW  
 H - OF WINDOW  
 TEL PIT - TELSTRA PIT  
 VEHICLE CROSSING  
 WM - WATER METER

**BEYOND MEASURE SURVEYS**  
 13 KEITH STREET  
 SCHOFIELDS NSW 2762  
 PHONE : 0413 472 138  
 email: aaron.beven@hotmail.com  
 ABN 30 733 082 068

10 Regent Street  
 Chippendale NSW 2008 | p 02 9282 9900  
 f 02 9282 9277

**COMPLETE**



SCALE 1:75  
 A1 UNREDUCED

CHECKED & APPROVED  
  
 DESIGNED  
 BS  
 APRIL 20  
 DRAWN  
 BS  
 APRIL 20

TRAFFIC COMMITTEE APPROVED  
  
 www.completeurban.com.au

STANDARDS OR GUIDELINES REFERRED TO  
 • TDT 2011/01a  
 • 1742.13-2009  
 • 1742.10-2009

S.R.A. / SURV. GEN.  
 R.T.A.  
 A.G.L. / SHELL PIPELINES  
 SYDNEY WATER  
 TELSTRA / OPTUS  
 SYDNEY ELECTRICITY  
 NOTICE OF ENTRY  
 KERB & GUTTER

**SERVICES**  
 COMMUNICATIONS  
 GAS  
 SEWER  
 WATER  
 RMS  
 AUSGRID  
 DRAINAGE PIPE

DATUM  
 A. H. D.  
 SCALES  
 AS SHOWN

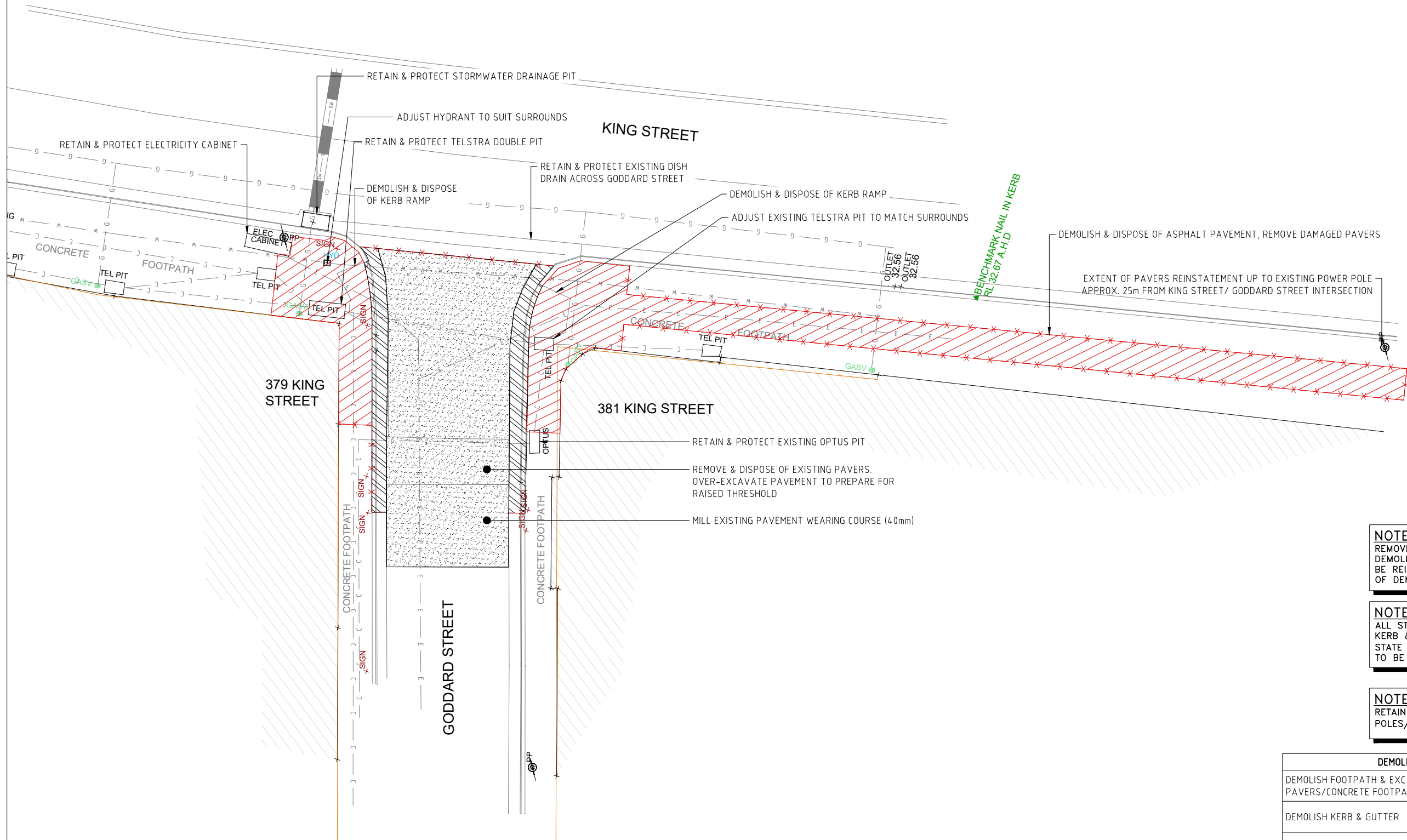
AMEND	DATE	DESCRIPTION	APPROV.
F	7/20	100% DETAIL DESIGN	NP
E	6/20	90% DETAIL DESIGN	NP
D	6/20	70% DETAIL DESIGN	NP
C	6/20	50% DETAIL DESIGN	NP
B	4/20	CONCEPT FOR REVIEW	NP
A	3/20	CONCEPT FOR REVIEW	NP

INNER WEST COUNCIL  
 GODDARD STREET AT KING STREET, NEWTOWN  
 PROPOSED CONTINUOUS FOOTPATH TREATMENT  
 EXISTING SURVEY & SERVICES PLAN

PROJECT NO.	302461	SHEET NO.	02
PLAN NO.	10134		
CAD FILE	3051-02-02.dwg		



**! WARNING !**  
**BEWARE OF UNDERGROUND SERVICES**  
 POSITION OF SERVICE LINES ARE TAKEN FROM RELEVANT AUTHORITY RECORDS OBTAINED FROM DIAL BEFORE YOU DIG AND ARE APPROXIMATE ONLY. NO RESPONSIBILITY IS TAKEN FOR THE ACCURACY OF THE INFORMATION SUPPLIED. THE CONTRACTOR IS TO ENSURE THAT THEY UNDERTAKE THEIR OWN DIAL BEFORE YOU DIG PROCEDURES AND LOCATE ALL SERVICES ACCURATELY PRIOR TO COMMENCEMENT OF WORK.



**NOTE**  
 REMOVE & STORE SIGNPOSTING IN DEMOLITION AREAS IN ORDER TO BE REINSTALLED UPON COMPLETION OF DEMOLITION WORKS.

**NOTE**  
 ALL STONE KERB SECTIONS & KERB & GUTTER SECTIONS ALONG STATE ROADS (KING STREET) ARE TO BE RETAINED & PROTECTED.

**NOTE**  
 RETAIN & PROTECT ALL LIGHT POLES/ POWER POLES.

DEMOLITION LEGEND	
DEMOLISH FOOTPATH & EXCAVATE FOR NEW PAVERS/CONCRETE FOOTPATH	
DEMOLISH KERB & GUTTER	
MILL EXISTING PAVEMENT WEARING COURSE	
SAWCUT LINE	-X-X-X-

10 Regent Street  
 Chippendale NSW 2008

p 02 9282 9900  
 f 02 9282 9277

**COMPLETE**



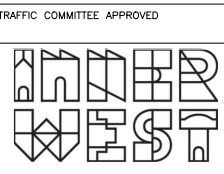
SCALE 1:75

A1 UNREDUCED

www.completeurban.com.au

CHECKED & APPROVED  
  
 APPROVED FOR CONSTRUCTION

SURVEYED & DRAFTED  
**BEYOND MEAS.**  
 MARCH 20  
 DESIGNED  
 BS  
 APRIL 20  
 DRAWN  
 BS  
 APRIL 20



STANDARDS OR GUIDELINES REFERRED TO  
 • TDT 2011/01a  
 • 1742.13-2009  
 • 1742.10-2009

SERVICES AFFECTED  
 TELSTRA / OPTUS  
 WATER  
 STORM WATER  
 GAS  
 ELEC. CABLES  
 RAILCORP

S.R.A. / SURV. GEN.  
 R.T.A.  
 A.G.L. / SHELL PIPELINES  
 SYDNEY WATER  
 TELSTRA / OPTUS  
 SYDNEY ELECTRICITY  
 NOTICE OF ENTRY  
 KERB & GUTTER

QUANTITIES

NOTICES DATE

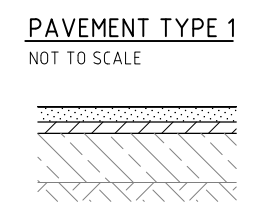
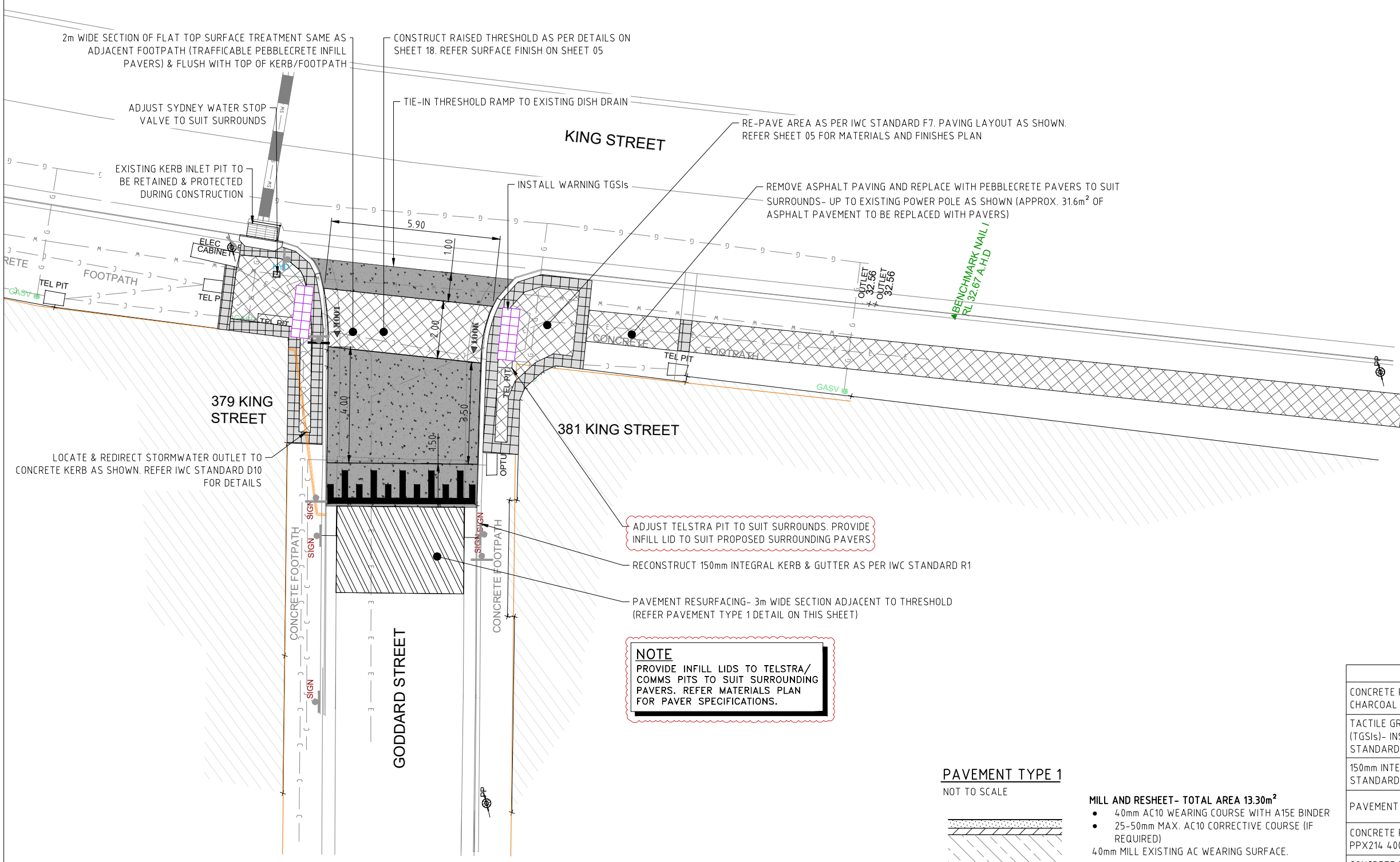
SERVICES  
 COMMUNICATIONS C-C-C-C  
 GAS G-G-G-G  
 SEWER S-S-S-S  
 WATER W-W-W-W  
 RMS RMS-RMS-RMS  
 AUSGRID E-E-E-E  
 DRAINAGE PIPE

DATUM  
 A. H. D.  
 SCALES  
 AS SHOWN

AMEND	DATE	DESCRIPTION	APPROV.
F	7/20	100% DETAIL DESIGN	NP
E	6/20	90% DETAIL DESIGN	NP
D	6/20	70% DETAIL DESIGN	NP
C	6/20	50% DETAIL DESIGN	NP
B	4/20	CONCEPT FOR REVIEW	NP
A	3/20	CONCEPT FOR REVIEW	NP

INNER WEST COUNCIL  
 GODDARD STREET AT KING STREET, NEWTOWN  
 PROPOSED CONTINUOUS FOOTPATH TREATMENT  
 DEMOLITION & PROTECTION PLAN

PROJECT NO.  
 302461  
 SHEET NO.  
 03  
 PLAN NO.  
 10134  
 CAD FILE  
 3051-02-03.dwg



**MILL AND RESHEET - TOTAL AREA 13.30m<sup>2</sup>**

- 40mm AC10 WEARING COURSE WITH A15E BINDER
- 25-50mm MAX. AC10 CORRECTIVE COURSE (IF REQUIRED)
- 40mm MILL EXISTING AC WEARING SURFACE.

**NOTES:**

- MILLING DEPTH +/- 10mm
- ADJUST WEARING COURSE LAYER DEPTH +/- 10mm (TO 50mm MAXIMUM)

GENERAL LEGEND	
CONCRETE PAVEMENT- TRAFFICABLE. COLOUR: CHARCOAL OXIDE	
TACTILE GROUND SURFACE INDICATORS (TGSIs)- INSTALLATION AS PER IWC STANDARD F5	
150mm INTEGRAL KERB & GUTTER AS PER IWC STANDARD R1	
PAVEMENT RESURFACING 40mm DEPTH	
CONCRETE PAVERS (INFILL)- PEBBLECRETE PPX214 400x400 HONED & BEVELLED	
CONCRETE PAVERS (BANDING)- PEBBLECRETE PPX61 400x400 HONED & BEVELLED	
REINSTALL ROOFWATER OUTLET TO KERB AS PER IWC STANDARD D10	

10 Regent Street  
Chippendale NSW 2008

p 02 9282 9900  
f 02 9282 9277

**COMPLETE**

www.completeurban.com.au

CHECKED & APPROVED

SURVEYED & DRAFTED BEYOND MEAS. MARCH 20  
DESIGNED BS APRIL 20  
DRAWN BS APRIL 20



STANDARDS OR GUIDELINES REFERRED TO  
• TDT 2011/01a • 1742.13-2009  
• 1742.10-2009

SERVICES AFFECTED  
TELSTRA / OPTUS  
WATER  
STORM WATER  
GAS  
ELEC. CABLES  
RAILCORP

S.R.A. / SURV. GEN.  
R.T.A.  
A.G.L. / SHELL PIPELINES  
SYDNEY WATER  
TELSTRA / OPTUS  
SYDNEY ELECTRICITY  
NOTICE OF ENTRY  
KERB & GUTTER

QUANTITIES

NOTICES DATE

SERVICES  
COMMUNICATIONS C-C-C-C  
GAS G-G-G-G  
SEWER S-S-S-S  
WATER W-W-W-W  
RMS RMS-RMS-RMS  
AUSGRID E-E-E-E  
DRAINAGE PIPE

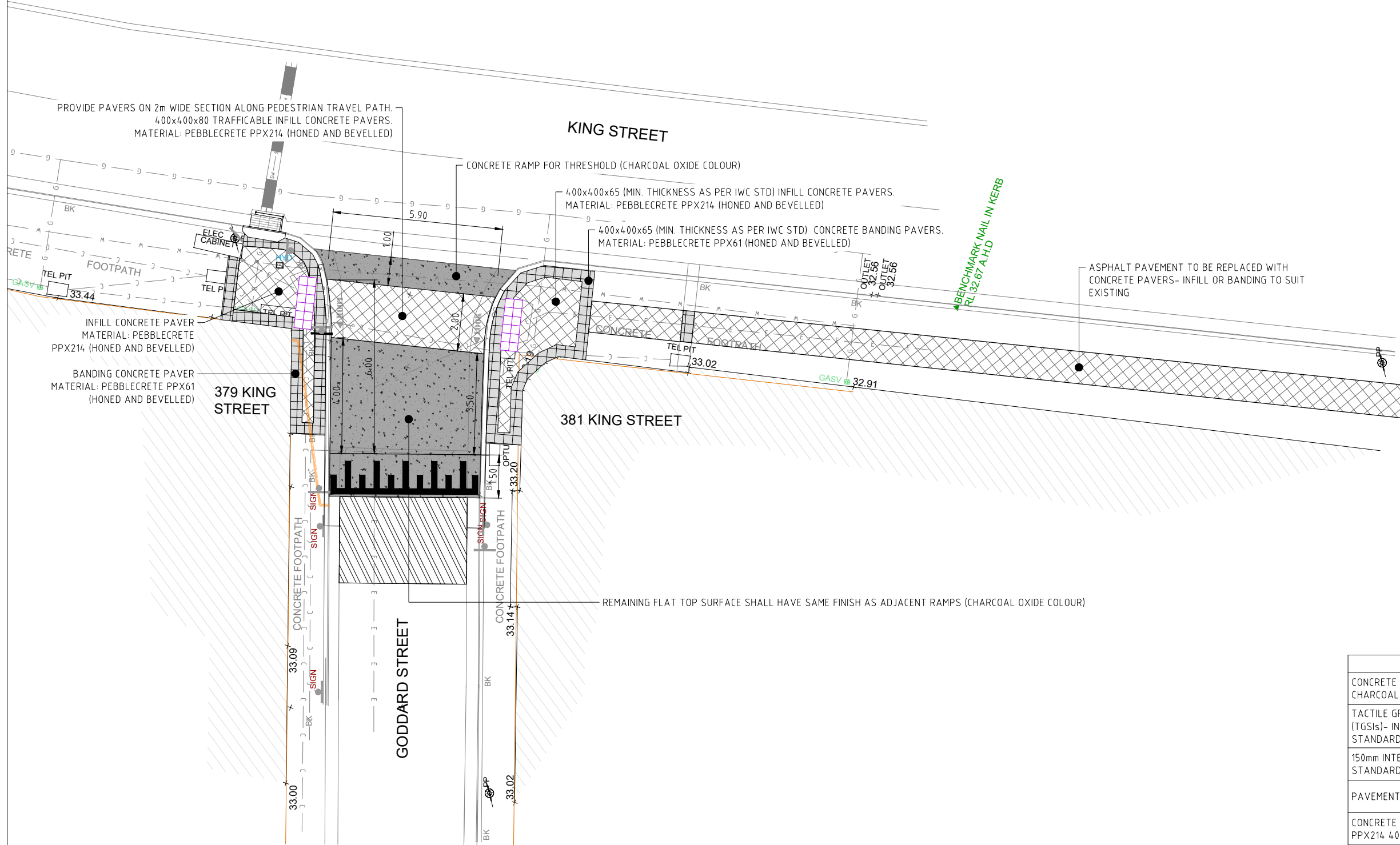
DATUM  
A. H. D.

SCALES  
AS SHOWN

AMEND	DATE	DESCRIPTION	APPROV.
F	7/20	100% DETAIL DESIGN	NP
E	6/20	90% DETAIL DESIGN	NP
D	6/20	70% DETAIL DESIGN	NP
C	6/20	50% DETAIL DESIGN	NP
B	4/20	CONCEPT FOR REVIEW	NP
A	3/20	CONCEPT FOR REVIEW	NP

INNER WEST COUNCIL  
GODDARD STREET AT KING STREET, NEWTOWN  
PROPOSED CONTINUOUS FOOTPATH TREATMENT  
CIVIL PLAN

PROJECT NO. 302461 SHEET NO. 04  
PLAN NO. 10134  
CAD FILE 3051-02-04.dwg



PROVIDE PAVERS ON 2m WIDE SECTION ALONG PEDESTRIAN TRAVEL PATH.  
400x400x80 TRAFFICABLE INFILL CONCRETE PAVERS.  
MATERIAL: PEBBLECRETE PPX214 (HONED AND BEVELLED)

**KING STREET**

CONCRETE RAMP FOR THRESHOLD (CHARCOAL OXIDE COLOUR)

400x400x65 (MIN. THICKNESS AS PER IWC STD) INFILL CONCRETE PAVERS.  
MATERIAL: PEBBLECRETE PPX214 (HONED AND BEVELLED)

400x400x65 (MIN. THICKNESS AS PER IWC STD) CONCRETE BANDING PAVERS.  
MATERIAL: PEBBLECRETE PPX61 (HONED AND BEVELLED)

ASPHALT PAVEMENT TO BE REPLACED WITH  
CONCRETE PAVERS- INFILL OR BANDING TO SUIT  
EXISTING

INFILL CONCRETE PAVER  
MATERIAL: PEBBLECRETE  
PPX214 (HONED AND BEVELLED)

BANDING CONCRETE PAVER  
MATERIAL: PEBBLECRETE PPX61  
(HONED AND BEVELLED)

**379 KING STREET**

**381 KING STREET**

**GODDARD STREET**

REMAINING FLAT TOP SURFACE SHALL HAVE SAME FINISH AS ADJACENT RAMPS (CHARCOAL OXIDE COLOUR)



SCALE 1:75

A1 UNREDUCED

GENERAL LEGEND	
CONCRETE PAVEMENT- TRAFFICABLE. COLOUR: CHARCOAL OXIDE	
TACTILE GROUND SURFACE INDICATORS (TGSIs)- INSTALLATION AS PER IWC STANDARD F5	
150mm INTEGRAL KERB & GUTTER AS PER IWC STANDARD R1	
PAVEMENT RESURFACING 40mm DEPTH	
CONCRETE PAVERS (INFILL)- PEBBLECRETE PPX214 400x400 HONED & BEVELLED	
CONCRETE PAVERS (BANDING)- PEBBLECRETE PPX61 400x400 HONED & BEVELLED	
REINSTALL ROOFWATER OUTLET TO KERB AS PER IWC STANDARD D10	

10 Regent Street  
Chippendale NSW 2008

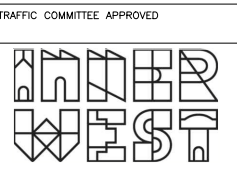
p 02 9282 9900  
f 02 9282 9277

**COMPLETE**

www.completeurban.com.au

CHECKED & APPROVED  
*[Signature]*

SURVEYED & DRAFTED  
**BEYOND MEAS.**  
MARCH 20  
DESIGNED  
BS  
APRIL 20  
DRAWN  
BS  
APRIL 20



STANDARDS OR GUIDELINES REFERRED TO  
• TDT 2011/01a  
• 1742.13-2009  
• 1742.10-2009

SERVICES AFFECTED  
TELSTRA / OPTUS  
WATER  
STORM WATER  
GAS  
ELEC. CABLES  
RAILCORP

S.R.A. / SURV. GEN.  
R.T.A.  
A.G.L. / SHELL PIPELINES  
SYDNEY WATER  
TELSTRA / OPTUS  
SYDNEY ELECTRICITY  
NOTICE OF ENTRY  
KERB & GUTTER

QUANTITIES

NOTICES DATE

SERVICES  
COMMUNICATIONS — C — C — C — C —  
GAS — G — G — G — G —  
SEWER — S — S — S — S —  
WATER — W — W — W — W —  
RMS — RMS — RMS — RMS —  
AUSGRID — E — E — E — E —  
DRAINAGE PIPE

DATUM  
A. H. D.

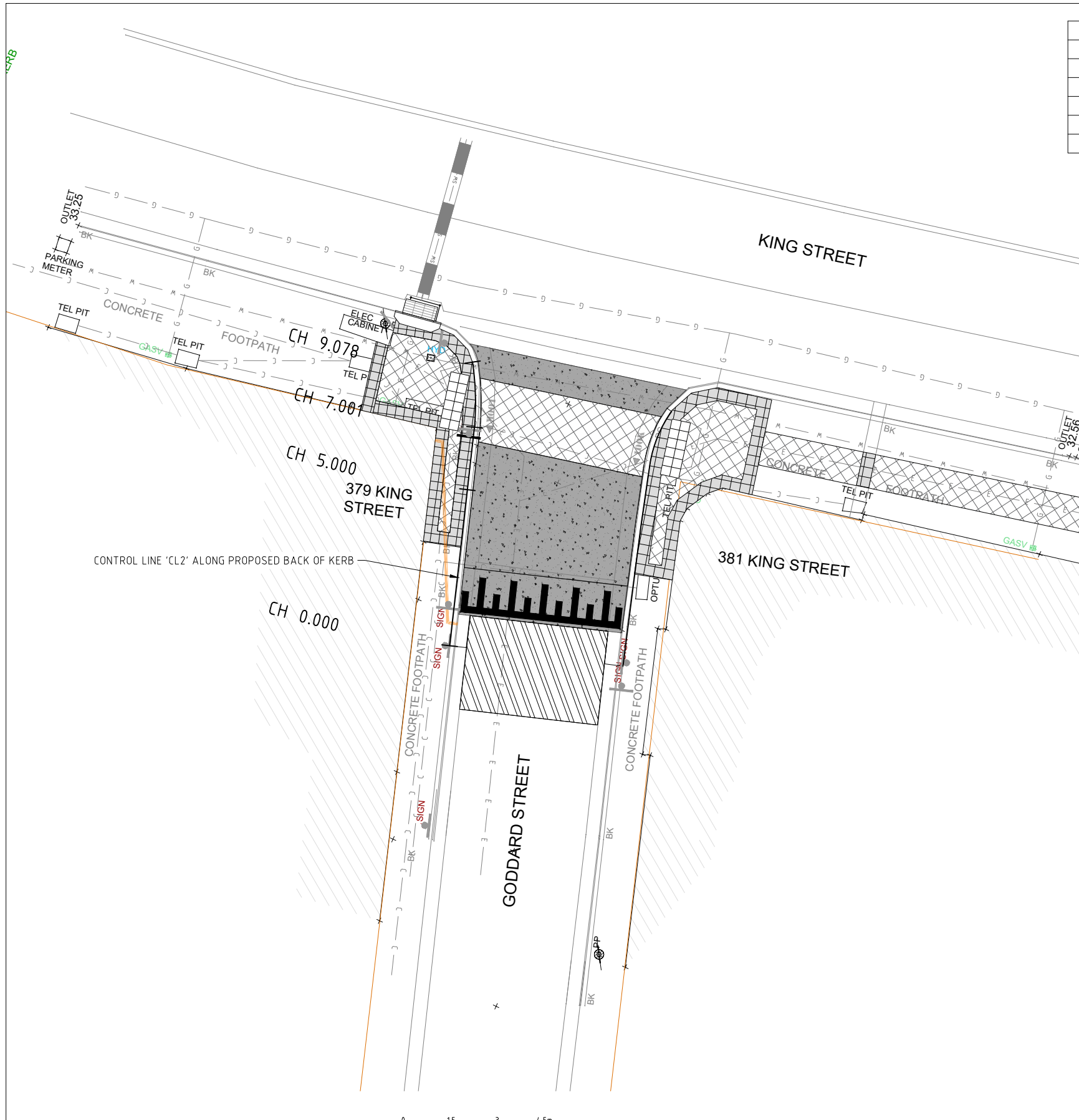
SCALES  
AS SHOWN

AMEND	DATE	DESCRIPTION	APPROV.
F	7/20	100% DETAIL DESIGN	NP
E	6/20	90% DETAIL DESIGN	NP
D	6/20	70% DETAIL DESIGN	NP
C	6/20	50% DETAIL DESIGN	NP
B	4/20	CONCEPT FOR REVIEW	NP
A	3/20	CONCEPT FOR REVIEW	NP

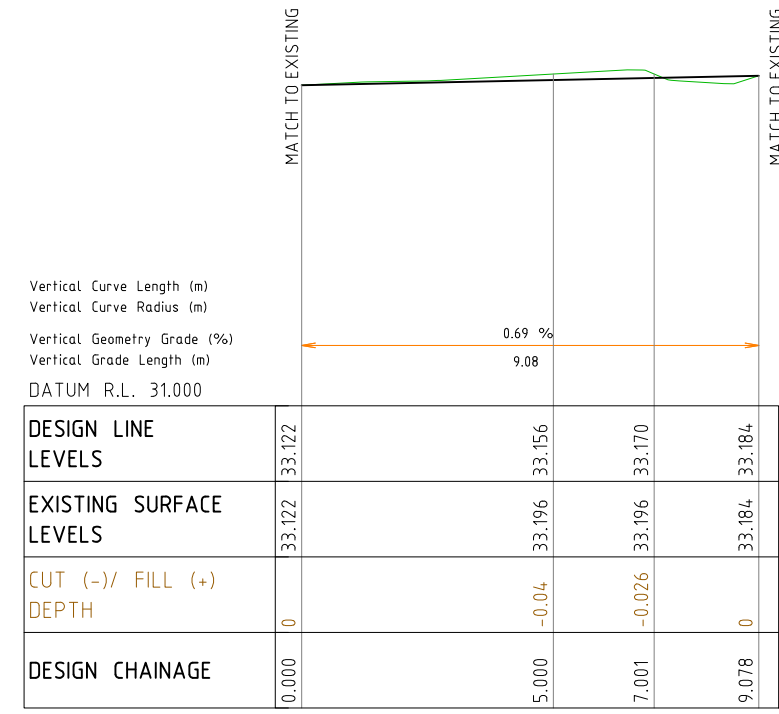
**INNER WEST COUNCIL**  
**GODDARD STREET AT KING STREET, NEWTOWN**  
**PROPOSED CONTINUOUS FOOTPATH TREATMENT**  
MATERIALS AND FINISHES PLAN

PROJECT NO. 302461 SHEET NO. 05  
PLAN NO. 10134  
CAD FILE 3051-02-05.dwg





CL2 SETOUT DETAILS							
PT	CHAINAGE	EASTING	NORTHING	HEIGHT	BEARING	RAD/SPIRAL	A.LENGTH
IP 1	0.000	331500.696	6247516.487	33.122	71°40'45.34"		
	5.000	331505.443	6247518.058	33.156	71°40'45.34"		
IP 2	7.001	331507.342	6247518.687	33.170			
IP 3	8.040	331508.323	6247519.043	33.177		R = -8.945	2.077
IP 4	9.078	331509.196	6247519.615	33.184	56°45'58.10"		



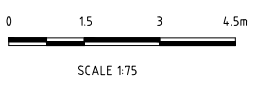
**LONGITUDINAL SECTION- CONTROL LINE 'CL2'**  
 HORIZONTAL SCALE: 1:75  
 VERTICAL SCALE: 1:25

GENERAL LEGEND	
CONCRETE PAVEMENT- TRAFFICABLE. COLOUR: CHARCOAL OXIDE	
TACTILE GROUND SURFACE INDICATORS (TGSIs)- INSTALLATION AS PER IWC STANDARD F5	
150mm INTEGRAL KERB & GUTTER AS PER IWC STANDARD R1	
PAVEMENT RESURFACING 40mm DEPTH	
CONCRETE PAVERS (INFILL)- PEBBLECRETE PPX214 400x400 HONED & BEVELLED	
CONCRETE PAVERS (BANDING)- PEBBLECRETE PPX61 400x400 HONED & BEVELLED	
REINSTALL ROOFWATER OUTLET TO KERB AS PER IWC STANDARD D10	

10 Regent Street  
 Chippendale NSW 2008 | p 02 9282 9900  
 f 02 9282 9277

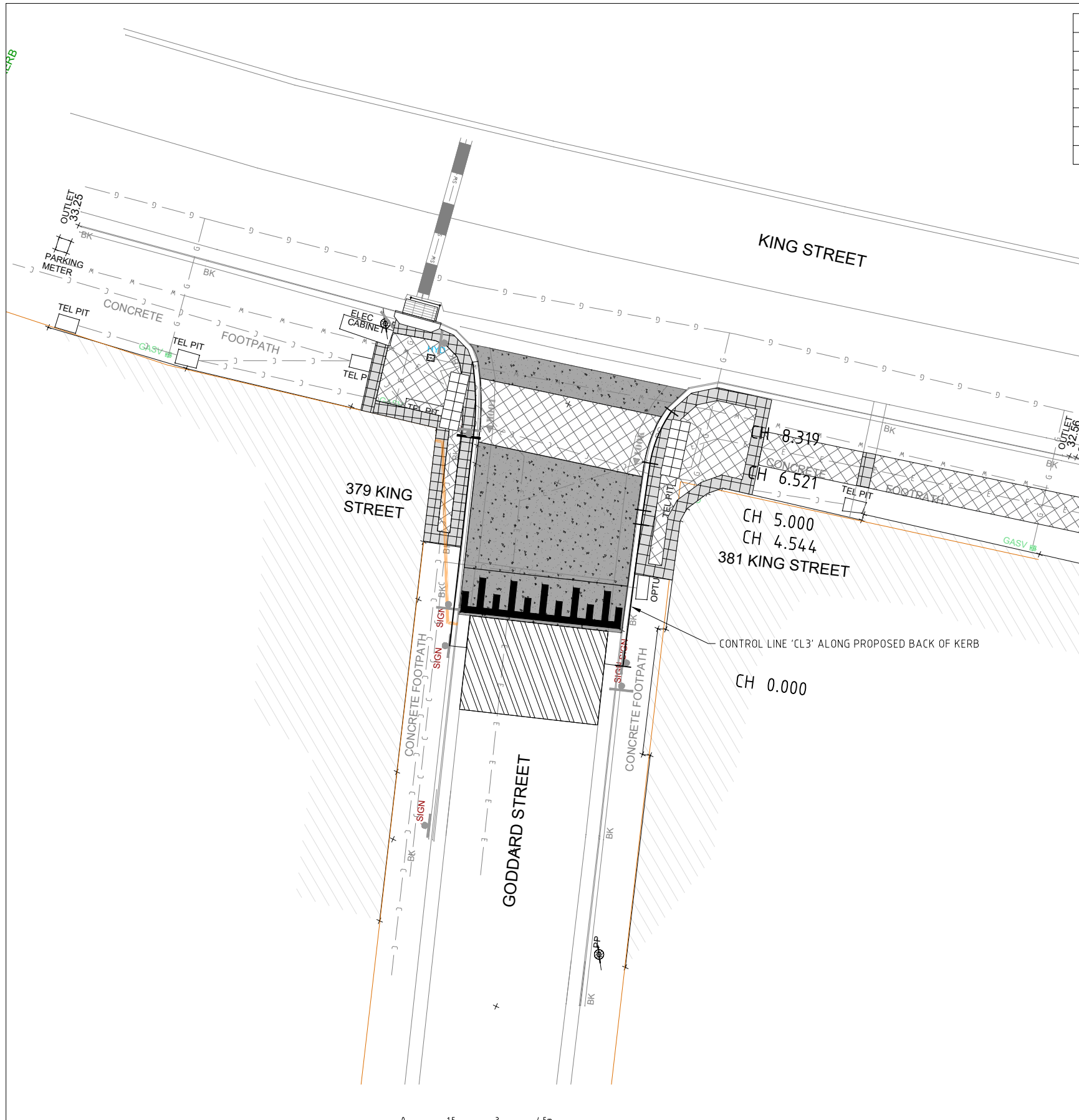
**COMPLETE**

www.completeurban.com.au

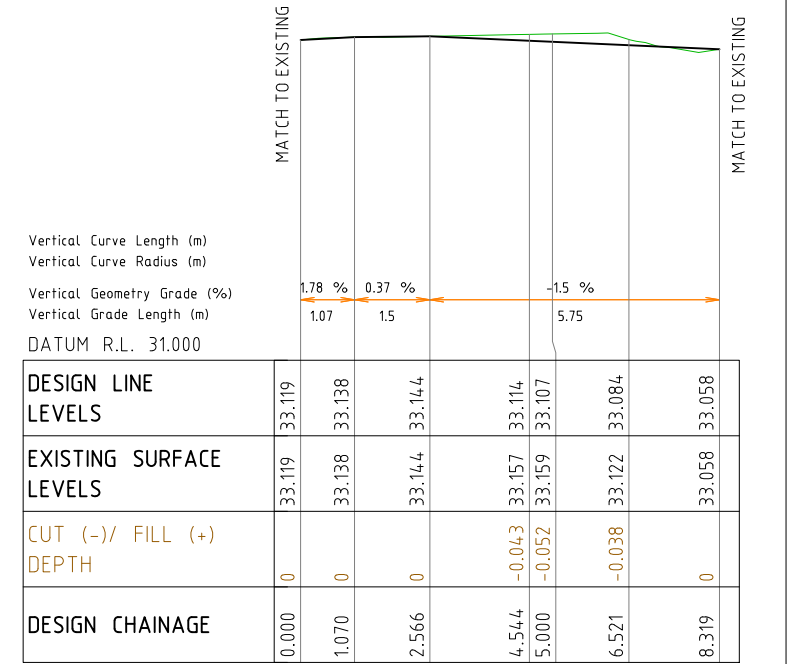


SCALE 1:75  
 A1 UNREDUCED

CHECKED & APPROVED  APPROVED FOR CONSTRUCTION 	SURVEYED & DRAFTED <b>BEYOND MEAS.</b> MARCH 20 DESIGNED <b>BS</b> APRIL 20 DRAWN <b>BS</b> APRIL 20	TRAFFIC COMMITTEE APPROVED 	STANDARDS OR GUIDELINES REFERRED TO • TDT 2011/01a • 1742.13-2009 • 1742.10-2009	S.R.A. / SURV. GEN. R.T.A. A.G.L. / SHELL PIPELINES SYDNEY WATER TELSTRA / OPTUS SYDNEY ELECTRICITY NOTICE OF ENTRY KERB & GUTTER	SERVICES AFFECTED TELSTRA / OPTUS STORM WATER WATER GAS ELEC. CABLES RAILCORP	QUANTITIES	SERVICES COMMUNICATIONS — C — C — C — C — GAS — G — G — G — G — SEWER — S — S — S — S — WATER — W — W — W — W — RMS — RMS — RMS — RMS — AUSGRID — E — E — E — E — DRAINAGE PIPE	DATUM A. H. D. SCALES <b>AS SHOWN</b>	<table border="1"> <tr> <th>AMEND</th> <th>DATE</th> <th>DESCRIPTION</th> <th>APPROV.</th> </tr> <tr> <td>F</td> <td>7/20</td> <td>100% DETAIL DESIGN</td> <td>NP</td> </tr> <tr> <td>E</td> <td>6/20</td> <td>90% DETAIL DESIGN</td> <td>NP</td> </tr> <tr> <td>D</td> <td>6/20</td> <td>70% DETAIL DESIGN</td> <td>NP</td> </tr> <tr> <td>C</td> <td>6/20</td> <td>50% DETAIL DESIGN</td> <td>NP</td> </tr> <tr> <td>B</td> <td>4/20</td> <td>CONCEPT FOR REVIEW</td> <td>NP</td> </tr> <tr> <td>A</td> <td>3/20</td> <td>CONCEPT FOR REVIEW</td> <td>NP</td> </tr> </table>	AMEND	DATE	DESCRIPTION	APPROV.	F	7/20	100% DETAIL DESIGN	NP	E	6/20	90% DETAIL DESIGN	NP	D	6/20	70% DETAIL DESIGN	NP	C	6/20	50% DETAIL DESIGN	NP	B	4/20	CONCEPT FOR REVIEW	NP	A	3/20	CONCEPT FOR REVIEW	NP	INNER WEST COUNCIL GODDARD STREET AT KING STREET, NEWTOWN PROPOSED CONTINUOUS FOOTPATH TREATMENT SETOUT PLAN & LONGITUDINAL SECTIONS - 'CL2'	PROJECT NO. <b>302461</b>	SHEET NO. <b>07</b>
										AMEND	DATE	DESCRIPTION	APPROV.																											
F	7/20	100% DETAIL DESIGN	NP																																					
E	6/20	90% DETAIL DESIGN	NP																																					
D	6/20	70% DETAIL DESIGN	NP																																					
C	6/20	50% DETAIL DESIGN	NP																																					
B	4/20	CONCEPT FOR REVIEW	NP																																					
A	3/20	CONCEPT FOR REVIEW	NP																																					
PLAN NO. <b>10134</b>	CAD FILE <b>3051-02-07.dwg</b>																																							



CL3 SETOUT DETAILS								
PT	CHAINAGE	EASTING	NORTHING	HEIGHT	BEARING	RAD/SPIRAL	A.LENGTH	DEFL.ANGLE
IP 1	0.000	331502.423	6247511.199	33.119	72°28'21.29"			
IP 2	4.544	331506.756	6247512.568	33.114				
	5.000	331507.193	6247512.697	33.107	73°30'16.61"			
IP 3	6.521	331508.651	6247513.129	33.084				
IP 4	7.420	331509.534	6247513.371	33.071		R = 3.927	1.798	26°14'12.86"
IP 5	8.319	331510.432	6247513.197	33.058	100°55'43.01"			



LONGITUDINAL SECTION- CONTROL LINE 'CL3'  
 HORIZONTAL SCALE: 1:75  
 VERTICAL SCALE: 1:25

GENERAL LEGEND	
CONCRETE PAVEMENT- TRAFFICABLE. COLOUR: CHARCOAL OXIDE	
TACTILE GROUND SURFACE INDICATORS (TGSIs)- INSTALLATION AS PER IWC STANDARD F5	
150mm INTEGRAL KERB & GUTTER AS PER IWC STANDARD R1	
PAVEMENT RESURFACING 40mm DEPTH	
CONCRETE PAVERS (INFILL)- PEBBLECRETE PPX214 400x400 HONED & BEVELLED	
CONCRETE PAVERS (BANDING)- PEBBLECRETE PPX61 400x400 HONED & BEVELLED	
REINSTALL ROOFWATER OUTLET TO KERB AS PER IWC STANDARD D10	

10 Regent Street  
 Chippendale NSW 2008

p 02 9282 9900  
 f 02 9282 9277

**COMPLETE**

www.completeurban.com.au

SCALE 1:75

A1 UNREDUCED

CHECKED & APPROVED  
 DESIGNED  
 DRAWN

SURVEYED & DRAFTED  
 BEYOND MEAS.  
 MARCH 20  
 APRIL 20  
 APRIL 20

TRAFFIC COMMITTEE APPROVED  
**INNER WEST**

STANDARDS OR GUIDELINES REFERRED TO  
 S.R.A. / SURV. GEN.  
 R.T.A.  
 A.G.L. / SHELL PIPELINES  
 SYDNEY WATER  
 TELSTRA / OPTUS  
 SYDNEY ELECTRICITY  
 NOTICE OF ENTRY  
 KERB & GUTTER

SERVICES AFFECTED  
 TELSTRA / OPTUS  
 STORM WATER  
 WATER  
 GAS  
 ELEC. CABLES  
 RAILCORP

SERVICES  
 COMMUNICATIONS  
 GAS  
 SEWER  
 WATER  
 RMS  
 AUSGRID  
 DRAINAGE PIPE

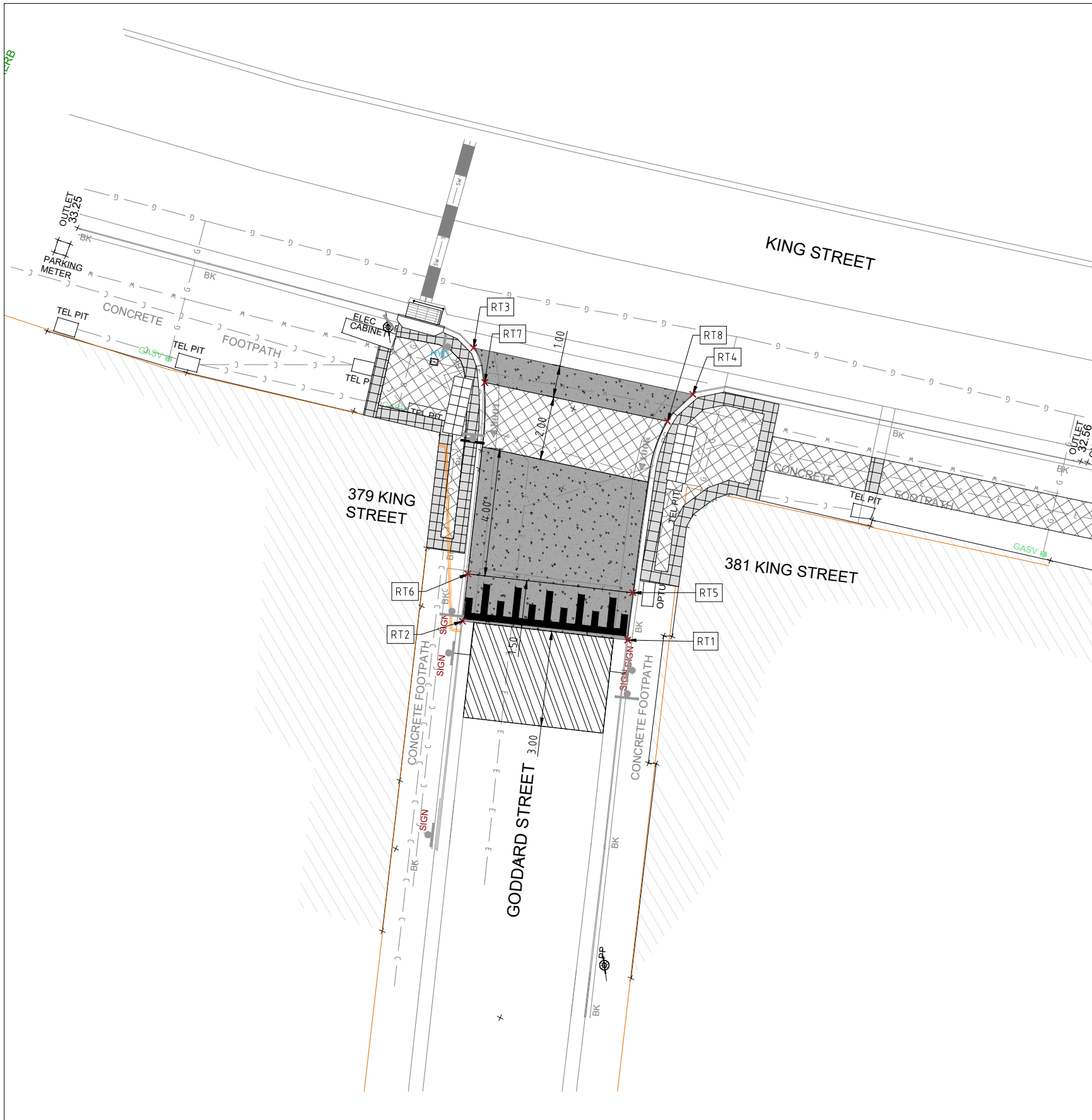
DATUM  
 A. H. D.  
 SCALES  
 AS SHOWN

AMEND	DATE	DESCRIPTION	APPROV.
F	7/20	100% DETAIL DESIGN	NP
E	6/20	90% DETAIL DESIGN	NP
D	6/20	70% DETAIL DESIGN	NP
C	6/20	50% DETAIL DESIGN	NP
B	4/20	CONCEPT FOR REVIEW	NP
A	3/20	CONCEPT FOR REVIEW	NP

INNER WEST COUNCIL  
 GODDARD STREET AT KING STREET, NEWTOWN  
 PROPOSED CONTINUOUS FOOTPATH TREATMENT  
 SETOUT PLAN & LONGITUDINAL SECTIONS - 'CL3'

PROJECT NO. 302461  
 SHEET NO. 08  
 PLAN NO. 10134  
 CAD FILE 3051-02-08.dwg





RAISED THRESHOLD SETOUT				
POINT	EASTING	NORTHING	RL	REMARKS
RT1	331503.3666	6247511.6862	32.9610	ALONG OUTER PERIMETER OF THRESHOLD (BOTTOM OF RAMPS)
RT2	331501.7253	6247516.6428	32.9780	
RT3	331509.6916	6247519.9315	33.1580	
RT4	331511.2536	6247513.0585	32.8980	
RT5	331504.7928	6247512.1508	33.0980	ALONG INNER PERIMETER (FLAT TOP)
RT6	331503.1508	6247517.1098	33.1390	
RT7	331508.8202	6247519.1459	33.1770	
RT8	331510.1453	6247513.4229	33.0610	

GENERAL LEGEND	
CONCRETE PAVEMENT- TRAFFICABLE. COLOUR: CHARCOAL OXIDE	
TACTILE GROUND SURFACE INDICATORS (TGSIs)- INSTALLATION AS PER IWC STANDARD F5	
150mm INTEGRAL KERB & GUTTER AS PER IWC STANDARD R1	
PAVEMENT RESURFACING 40mm DEPTH	
CONCRETE PAVERS (INFILL)- PEBBLECRETE PPX214 400x400 HONED & BEVELLED	
CONCRETE PAVERS (BANDING)- PEBBLECRETE PPX61 400x400 HONED & BEVELLED	
REINSTALL ROOFWATER OUTLET TO KERB AS PER IWC STANDARD D10	

10 Regent Street  
Chippendale NSW 2008

p 02 9282 9900  
f 02 9282 9277

**COMPLETE**

0 1.5 3 4.5m  
SCALE 1:75

A1 UNREDUCED

CHECKED & APPROVED  APPROVED FOR CONSTRUCTION 	SURVEYED & DRAFTED <b>BEYOND MEAS.</b> MARCH 20 DESIGNED BS APRIL 20 DRAWN BS APRIL 20	TRAFFIC COMMITTEE APPROVED 	STANDARDS OR GUIDELINES REFERRED TO • TDT 2011/01a • 1742.13-2009 • 1742.10-2009	S.R.A. / SURV. GEN. R.T.A. A.G.L. / SHELL PIPELINES SYDNEY WATER TELSTRA / OPTUS SYDNEY ELECTRICITY NOTICE OF ENTRY KERB & GUTTER	SERVICES AFFECTED TELSTRA / OPTUS STORM WATER WATER GAS ELEC. CABLES RAILCORP	QUANTITIES	SERVICES COMMUNICATIONS — C — C — C — C — GAS — G — G — G — G — SEWER — S — S — S — S — WATER — W — W — W — W — RMS — RMS — RMS — RMS — AUSGRID — E — E — E — E — DRAINAGE PIPE	DATUM A. H. D. SCALES AS SHOWN	<table border="1"> <tr> <th>AMEND</th> <th>DATE</th> <th>DESCRIPTION</th> <th>APPROV.</th> </tr> <tr> <td>F</td> <td>7/20</td> <td>100% DETAIL DESIGN</td> <td>NP</td> </tr> <tr> <td>E</td> <td>6/20</td> <td>90% DETAIL DESIGN</td> <td>NP</td> </tr> <tr> <td>D</td> <td>6/20</td> <td>70% DETAIL DESIGN</td> <td>NP</td> </tr> <tr> <td>C</td> <td>6/20</td> <td>50% DETAIL DESIGN</td> <td>NP</td> </tr> <tr> <td>B</td> <td>4/20</td> <td>CONCEPT FOR REVIEW</td> <td>NP</td> </tr> <tr> <td>A</td> <td>3/20</td> <td>CONCEPT FOR REVIEW</td> <td>NP</td> </tr> </table>	AMEND	DATE	DESCRIPTION	APPROV.	F	7/20	100% DETAIL DESIGN	NP	E	6/20	90% DETAIL DESIGN	NP	D	6/20	70% DETAIL DESIGN	NP	C	6/20	50% DETAIL DESIGN	NP	B	4/20	CONCEPT FOR REVIEW	NP	A	3/20	CONCEPT FOR REVIEW	NP	PROJECT NO. <b>302461</b>	SHEET NO. <b>09</b>
	AMEND	DATE	DESCRIPTION	APPROV.																																			
F	7/20	100% DETAIL DESIGN	NP																																				
E	6/20	90% DETAIL DESIGN	NP																																				
D	6/20	70% DETAIL DESIGN	NP																																				
C	6/20	50% DETAIL DESIGN	NP																																				
B	4/20	CONCEPT FOR REVIEW	NP																																				
A	3/20	CONCEPT FOR REVIEW	NP																																				
INNER WEST COUNCIL GODDARD STREET AT KING STREET, NEWTOWN PROPOSED CONTINUOUS FOOTPATH TREATMENT RAISED THRESHOLD SETOUT DETAILS								PLAN NO. <b>10134</b>	CAD FILE <b>3051-02-09.dwg</b>																														

AT CONTROL  
LINE  
X= 331506.372  
Y= 6247515.332

DATUM RL 32.100

DESIGN SURFACE LEVEL									
CUT (-)/ FILL (+) DEPTH									
EXISTING LEVEL									
OFFSET									

CH. 7.000

AT CONTROL  
LINE  
X= 331505.417  
Y= 6247515.034

DATUM RL 32.000

DESIGN SURFACE LEVEL									
CUT (-)/ FILL (+) DEPTH									
EXISTING LEVEL									
OFFSET									

CH. 6.000

AT CONTROL  
LINE  
X= 331504.462  
Y= 6247514.737

DATUM RL 32.000

DESIGN SURFACE LEVEL									
CUT (-)/ FILL (+) DEPTH									
EXISTING LEVEL									
OFFSET									

CH. 5.000

AT CONTROL  
LINE  
X= 331508.281  
Y= 6247515.926

DATUM RL 31.900

DESIGN SURFACE LEVEL									
CUT (-)/ FILL (+) DEPTH									
EXISTING LEVEL									
OFFSET									

CH. 9.000

AT CONTROL  
LINE  
X= 331507.327  
Y= 6247515.629

DATUM RL 32.000

DESIGN SURFACE LEVEL									
CUT (-)/ FILL (+) DEPTH									
EXISTING LEVEL									
OFFSET									

CH. 8.000

10 Regent Street  
Chippendale NSW 2008

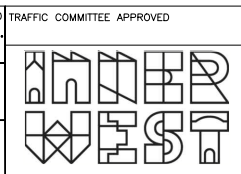
p 02 9282 9900  
f 02 9282 9277

**COMPLETE**

ABN 64 100 037 812  
www.completeurban.com.au

CHECKED & APPROVED  
*[Signature]*

SURVEYED & DRAFTED  
**BEYOND MEAS.**  
MARCH 20  
DESIGNED  
BS  
APRIL 20  
DRAWN  
BS  
APRIL 20



STANDARDS OR GUIDELINES REFERRED TO  
• TDT 2011/01a • 1742.13-2009  
• 1742.10-2009

SERVICES AFFECTED  
TELSTRA / OPTUS  
STORM WATER  
WATER  
GAS  
ELEC. CABLES  
RAILCORP

QUANTITIES

S.R.A. / SURV. GEN.  
R.T.A.  
A.G.L. / SHELL PIPELINES  
SYDNEY WATER  
TELSTRA / OPTUS  
SYDNEY ELECTRICITY  
NOTICE OF ENTRY  
KERB & GUTTER

NOTICES DATE

SERVICES  
COMMUNICATIONS — C — C — C — C —  
GAS — G — G — G — G —  
SEWER — S — S — S — S —  
WATER — W — W — W — W —  
RMS — RMS — RMS — RMS —  
AUSGRID — E — E — E — E —  
DRAINAGE PIPE

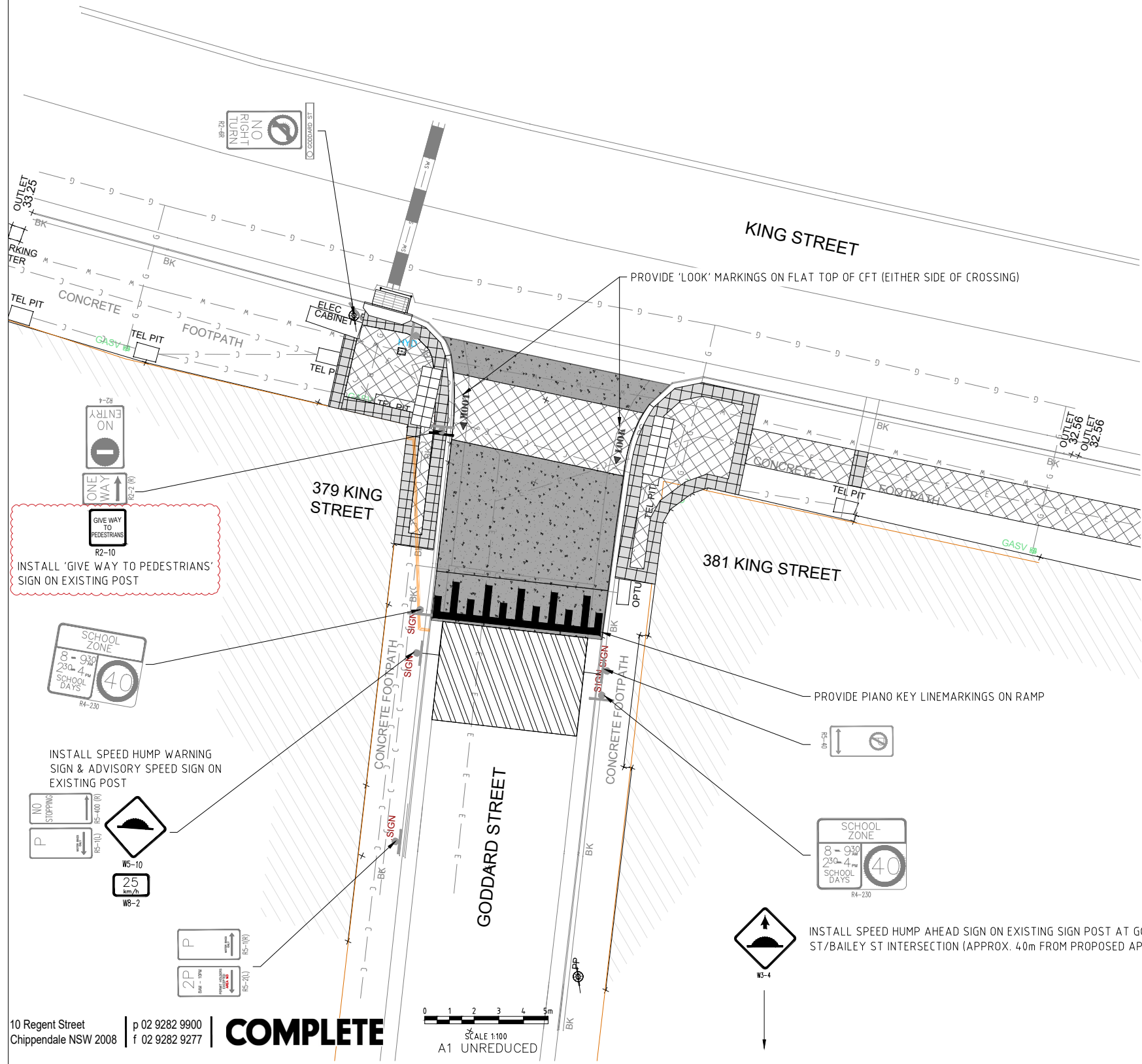
DATUM  
A. H. D.

SCALES  
AS SHOWN

AMEND	DATE	DESCRIPTION	APPROV.
F	7/20	100% DETAIL DESIGN	NP
E	6/20	90% DETAIL DESIGN	NP
D	6/20	70% DETAIL DESIGN	NP
C	6/20	50% DETAIL DESIGN	NP
B	4/20	CONCEPT FOR REVIEW	NP
A	3/20	CONCEPT FOR REVIEW	NP

INNER WEST COUNCIL  
GODDARD STREET AT KING STREET, NEWTOWN  
PROPOSED CONTINUOUS FOOTPATH TREATMENT  
CROSS SECTIONS- ACROSS 'CL1'

PROJECT NO. 302461 SHEET NO. 10  
PLAN NO. 10134  
CAD FILE 3051-02-10.dwg



10 Regent Street  
Chippendale NSW 2008 | p 02 9282 9900  
f 02 9282 9277

**COMPLETE**

ABN 64 100 037 812  
www.completeurban.com.au

SCALE 1:100  
A1 UNREDUCED

SIGNAGE LEGEND	
PROPOSED SIGN POST	
EXISTING SIGN TO BE RETAINED	
PROPOSED NEW SIGN	

GENERAL LEGEND	
CONCRETE PAVEMENT - TRAFFICABLE. COLOUR: CHARCOAL OXIDE	
TACTILE GROUND SURFACE INDICATORS (TGSIs) - INSTALLATION AS PER IWC STANDARD F5	
150mm INTEGRAL KERB & GUTTER AS PER IWC STANDARD R1	
PAVEMENT RESURFACING 40mm DEPTH	
CONCRETE PAVERS (INFILL) - PEBBLECRETE PPX214 400x400 HONED & BEVELLED	
CONCRETE PAVERS (BANDING) - PEBBLECRETE PPX61 400x400 HONED & BEVELLED	
REINSTALL ROOFWATER OUTLET TO KERB AS PER IWC STANDARD D10	

CHECKED & APPROVED 	SURVEYED & DRAFTED <b>BEYOND MEAS.</b> MARCH 20	TRAFFIC COMMITTEE APPROVED 	STANDARDS OR GUIDELINES REFERRED TO • TDT 2011/01a • 1742.13-2009 • 1742.10-2009	S.R.A. / SURV. GEN. R.T.A. A.G.L. / SHELL PIPELINES SYDNEY WATER TELSTRA / OPTUS SYDNEY ELECTRICITY NOTICE OF ENTRY KERB & GUTTER	SERVICES AFFECTED TELSTRA / OPTUS STORM WATER WATER GAS ELEC. CABLES RAILCORP	QUANTITIES	SERVICES COMMUNICATIONS — C — C — C — C — GAS — G — G — G — G — SEWER — S — S — S — S — WATER — W — W — W — W — RMS — RMS — RMS — RMS — AUSGRID — E — E — E — E — DRAINAGE PIPE	DATUM A. H. D.	SCALES AS SHOWN	AMEND DATE	DESCRIPTION	APPROV.	PROJECT NO.	SHEET NO.
													302461	11
APPROVED FOR CONSTRUCTION 	DESIGNED BS APRIL 20			NOTICES	DATE							INNER WEST COUNCIL		
DRAWN BS APRIL 20	GODDARD STREET AT KING STREET, NEWTOWN													
PROPOSED CONTINUOUS FOOTPATH TREATMENT												PLAN NO.	10134	
SIGNAGE & LINEMARKING PLAN												CAD FILE	3051-02-11.dwg	