

NAME Aboriginal and Torres Strait Islander Working Group Meeting

Location:

Ashfield Service Centre
Community Room 2 – Patricia Blackman
Level – Upper ground
260 Liverpool Road, Ashfield NSW 2131
Tel: (02) 9392 5755

Tuesday 18th June 2019, 6:00pm – 9:00pm

NB: THIS MEETING WAS A CHAT AS THERE WERE NOT ENOUGH TO MAKE A QUORUM

INDEX

1. Welcome

Welcome to Country for the meeting and the Aboriginal & Torres Strait Islander peoples who live, work and relax within the Inner West.

2. Introductions

Amanda Buckland (AB) – Living Arts Manager
Sue Griffiths – (SG)
John Staines – (JSt)
Deborah Lennis (DL)– Aboriginal Programs Supervisor IWC
Victoria Johnstone (VJ) – Living Arts Team IWC
Mandy Smith (MS) – Parks & Recreation IWC
Barbara Becker (BB)– Engagement Officer IWC

Apologies

Robert (Bob) Webb (BW)
Jessica Staines (JeS)
Allan Barnes (AB)
Tess Heffernan (TH)
Janelle Scott (JS)
Pam Touma – (PT)
Agnus Ware (AW)
Jenny Thomsen (JT)
Nardi Simpson (NS)
Ben Bowen (BB)

3. Disclosure of Interest (any conflicts of interest need to be disclosed in accordance with Council's Code of Conduct)

NIL Disclosures of Interest were tabled

INDEX

Local Democracy Groups – 2019
Working Group Agenda

4. Arts briefing (EDGE) – Amanda Buckland & Victoria Johnstone

- Getting a report done to show what spaces and costs IWC has in the arts portfolio
- EDGE EOI out
 - Ashfield – 12-15 September
 - Sydenham – 19 August – this will be around the skatepark with a sunset event
 - Newtown – 7-10 November
 - Balmain – 21-24 November
- Grants available t \$5,000 for ideas for any of the Edge events (see guidelines - attachment 1)
- COMMENTS/QUESTIONS
 - Maybe it should be sent to Christian Brothers School in Lewisham as they have a young dance troupe
 - It is about people sharing ideas
 - What about Big Boy – Beat Boxing, known as the ‘Soul of the Community’
 - The Aboriginal comedian – Steven Oliver

5. Parks Briefing (POM’s) – Mandy Smith

- Brief overview on what POM’s are (attachment 2)
- POM’s for Tempe Reserve & Leichhardt Park (attachment 3)

6. Strategic Planning – Environment Plan & Land Zones – Barbara Becker

- **These will be on ‘Your Say’ Monday 24 June – 28 July**
- Land Use Strategy
 - Local Housing
 - Population going up
 - Need more
 - How do we plan for all this effectively?
 - What type of housing - eg: style, number?
 - Transport
 - Timing of deliveries to businesses
 - Cars on footpaths
 - Long term better use
- There will be public drop-in including
 - Tuesday 25 – Ashfield – evening session
 - Wednesday 26 – King Street – lunchtime
 - Friday 2 – Marrickville Metro – all day

7. NAIDOC

- Koori Kids Disco – Marrickville Town Hall 5 July 2019 5-8pm

8. Aboriginal Action Plan

9. Rivers Update

- a. **Cooks River – Dual Naming**
- b. **Parramatta River – Swimmable**

10. Other Business

- a. **Reconciliation Week briefing**
- b. **Website/Newsletter – what’s new out and about**
- c. **Steel Park Community Rooms update - EOI**
- d. **Indigenous Survival Memorial update**

Local Democracy Groups – 2019
Working Group Agenda

- e. Wayfinding Update (Artworks)**
- f. YOUR SAY - approx. 40**

Meeting closed 6:45pm



INNER WEST COUNCIL

EDGE 2019 – EOI Guidelines

EDGE Ashfield 12-15 September 2019

Opens: Monday June 3
Closes: Sunday June 30



EDGE Newtown 7-10 November 2019

Opens: Monday June 3
Closes: Sunday June 30

EDGE Balmain 21-24 November 2019

Opens: Monday June 3
Closes: Sunday June 30



Pictured above – sArterior by ArteConnect, EDGE Newtown 2018 – RESPECT Event, Lolo Lovina – Masquerade Ball

DEADLINE Midnight Sunday 30 June 2019

EDGE Encounters

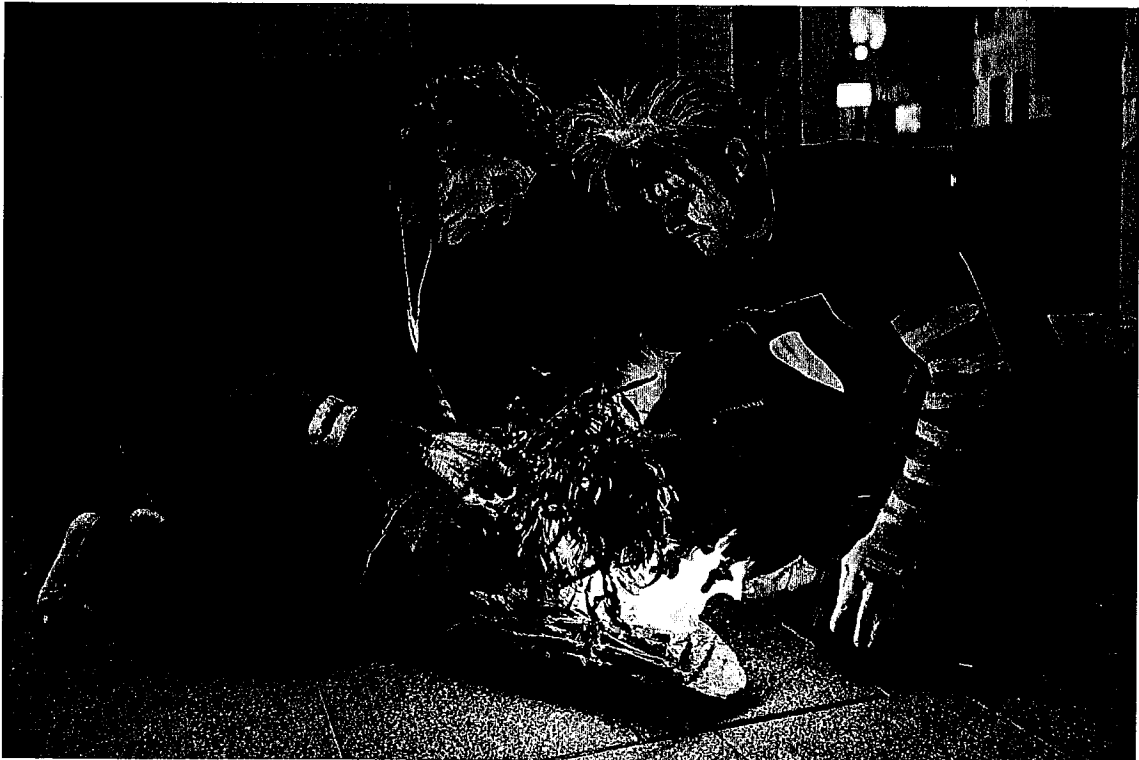
A progressive move by Inner West Council, the EDGE Program was funded for two years and this EOI is the final call for this funding cycle. Join us as we show our elected Council the multiple reasons why they should fund another round of EDGE encounters. All EDGE events look to our creative ecosystems for insight and a window to the diverse peoples, practices and stories of the inner west.

Background

What does the name EDGE mean?

EDGE refers to our position on the edge of Global Sydney and the edge of the Asia Pacific. Edge spaces are in between, along borderlines, liminal and experimental. Our artists are on the cutting edge of contemporary practice but for them to thrive, their creative ecosystem needs to be protected.

The term EDGE species comes from the conservation movement referring to flora and fauna that are Ecologically Distinct and Globally Endangered. This term can also apply to artists and producers in urban cities who create in affordable factories and warehouses on industrial lands that are rapidly being rezoned for residential use. They are being impacted by these EDGE effects of changes in population or structures that are occurring at the boundary of two or more habitats.



Uncle Noel and Joshua Staines – Welcome to Country at EDGE Ashfield, September 2018

EDGE Encounters: Community engagement and audience

All EDGE encounters are place based and celebrate all those who have cared for and connected to each place over time which include.

- The Gadigal Wangal people, custodians of this land for many thousands of years lived throughout the inner west and where Aboriginal History, culture and heritage thrived through a diverse agriculture and connection to country.
- The workers and skilled artisans engaged in the manufacture of a myriad of items in large scale factories to small family enterprises. Just about everything was once manufactured here in the inner west.
- The diverse migrant communities enriching us with culture, language, cuisine and new ideas from across the globe.
- Farm workers from the small farm holdings of Marrickville, to the shipyards in the working harbour of Balmain. Timber yards were dotted around the landscape to service both the home, and shipbuilding industries
- The creators and designers and the community activists and historians that record local stories, advocate for the area and keep the spirit of place *in place*.
- The creative community of the inner west. The cutting edge musicians, performers and producers in recording studios and music venues and the artists, crafters and inventors in studios, businesses and makerspace clusters.



Suara Indonesian Dance at EDGE Ashfield, September 2018

EDGE Funding Options

Expressions of Interest for EDGE Ashfield, EDGE, Newtown and EDGE Balmain are open for applications within the following budget parameters. Budgets for the project are to cover all costs associated with the development and presentation of the artwork. A number of projects will be supported and groups can apply for more than one category and or location.

Gold Commissions \$3000 to \$10,000	<ul style="list-style-type: none">• (activations, large scale installations, pop ups programs)
Green Commissions \$500 to \$3,000	<ul style="list-style-type: none">• (talks, workshops, performances, rovers and bands)

Brief

We are seeking innovative, highly engaging and bold ideas that showcase and/or transform public spaces, unusual or creative spaces in identified precincts, and proposals that will reflect the unique stories, physical and cultural landscape of each precinct. We wish to showcase local creatives and communities and ask you how you propose to do that in your submission. We are looking for projects that inspire and involve or engage the local community, visitors and audiences in project development / presentation, or both.

Ideas and proposals from all art disciplines are welcome. Collaborative proposals, involving a collective of creatives, art forms and/or partner organisations are welcome.

We are looking for projects that:

- Activate public or unusual spaces, venues or creative spaces and enterprises;
- Reflect and amplify the themes for that site;
- Demonstrate artistic excellence;
- Are original and innovative; and
- Engage the local community, visitors and audiences in its development / presentation, or both.

Submission requirements

All submissions must be made through the online **Smarty Grants** form. Emailed submissions will not be accepted. Ensure you allow enough time to apply and include all of the following.

- Contact details
- Nominate the Commission Category you are applying for: Gold or Green?
- Project Working Title
- Project Outline describing the artwork/project concept and methodology and how it meets the creative brief for that site (Describe why, who, what, when, where and how you will do this, maximum 2500 words)
- Photos, images, drawings or sound files etc of the proposed work/project.
- Artist/s team bio or resume, including relevant examples of previous works.
- An indicative budget that includes all items required to deliver, present and maintain the project (i.e. artist fees, fabrication, transportation, equipment and installation costs, engineering, insurances, etc.)

Please ensure that all files are clearly labelled with the applicant's name. Maximum file size for each is 5MB.

Assessment Criteria

Proposals will be evaluated according but not limited to:

- Relevance to the creative brief in exploring the unique themes of the site and surrounds;
- Innovative ideas and concepts for public/unusual spaces/venues or creative enterprises;
- Calibre and experience of artist/s/team, proven track record indicating ability to work within budget and timeframes and understanding, of working with local government public programs;
- Consideration of WH&S and sustainability factors (i.e. durability and capacity for outdoor weather, robust installation, vandalism, stability and security).
- Curatorial fit and connection to place and audience

Timeline

Expression of interest opens:	Monday June 3
Expression of Interest Closes:	Sunday June 30 (midnight)
EDGE Ashfield artists notified:	Monday July 8
EDGE Newtown and Balmain artists notified:	Thursday July 18
EDGE Ashfield Artists/ groups contracted:	Monday July 22
EDGE Newtown and Balmain artists contracted:	Tuesday 30 July

Contact

For enquiries or to discuss your ideas please email:

EDGE Ashfield	Bronwyn Tuohy – Placemaking and Public Arts Leader, Living Arts Bronwyn.Tuohy@innerwest.nsw.gov.au
EDGE Newtown	Victoria Johnstone – Arts Projects and Partnerships Leader, Living Arts Victoria.Johnstone@innerwest.nsw.gov.au
EDGE Balmain	Costa Atzemis – EDGE Production, Living arts Costa.Atzemis@innerwest.nsw.gov.au
All EDGE Enquiries	Amanda Buckland – Manager, Living Arts Amanda.Buckland@innerwest.nsw.gov.au

TERMS and CONDITIONS

Submissions

All submissions must be made using the online Smarty Grants form and include all items listed in the Submission Requirements.

Disclaimer

Council is not committed contractually in any way to a company or individual whose submissions in response to this EOI are accepted. The issue of this EOI does not commit the Council to proceed with any part of this project.

Expenses

No payment will be made for any expenses or losses which may be incurred by the responding party in connection with the preparation of the EOI or in visiting the site.

Selection Process

Council will assess all submissions received in response to this EOI by the closing date. Council will establish an evaluation panel that will assess submissions in accordance with the Assessment Criteria provided above. Respondents may be contacted if more detail is required about their submissions. The decisions made during the selection process are final.

Contract and Insurances

Prior to commencing works, selected applicants will be required to enter a contract with Council and to supply Public Liability and other relevant insurances or licenses, risk assessment and publicity material.

Confidentiality

Information provided or imparted to any respondent as part of the EOI process is confidential to Council and shall not be used by the respondent for any other purpose. Information supplied by successful applicants shall not be treated as commercially confidential unless specifically requested by the respondent. Information received by Council may be subject to public disclosure under Government Information (Public Access) Act 2009 unless it is provided or relates to commercially sensitive information and meets the criteria for exemption from disclosure under the Act.

7 Park Plans of Management

June 2019

 INNER WEST COUNCIL

What is a Park Plan of Management?

What is a Plan of Management?

Plans of Management are important documents providing clear guidelines for the effective short and long term management of all land owned by Council or under Council's control.

Plans of Management usually derive their management recommendations from the following criteria established by Council and stakeholders:

- Roles and values
- Desired outcomes (objectives)
- Issues (opportunities and constraints)
- Crown Lands & Local Government Act requirements

Council has 269 parks

Classifications (Types) of Council Parks with their definitions are explained below:

District - use by local residents and extends to residents beyond the IWC boundaries. A large significant park (normally with a sporting ground within it) with a diverse range of activities

Local - use by residents within the suburb

Neighbourhood- use by residents within the immediate vicinity - with equipment / furniture

Pocket- has minimal or no assets (includes road closures)

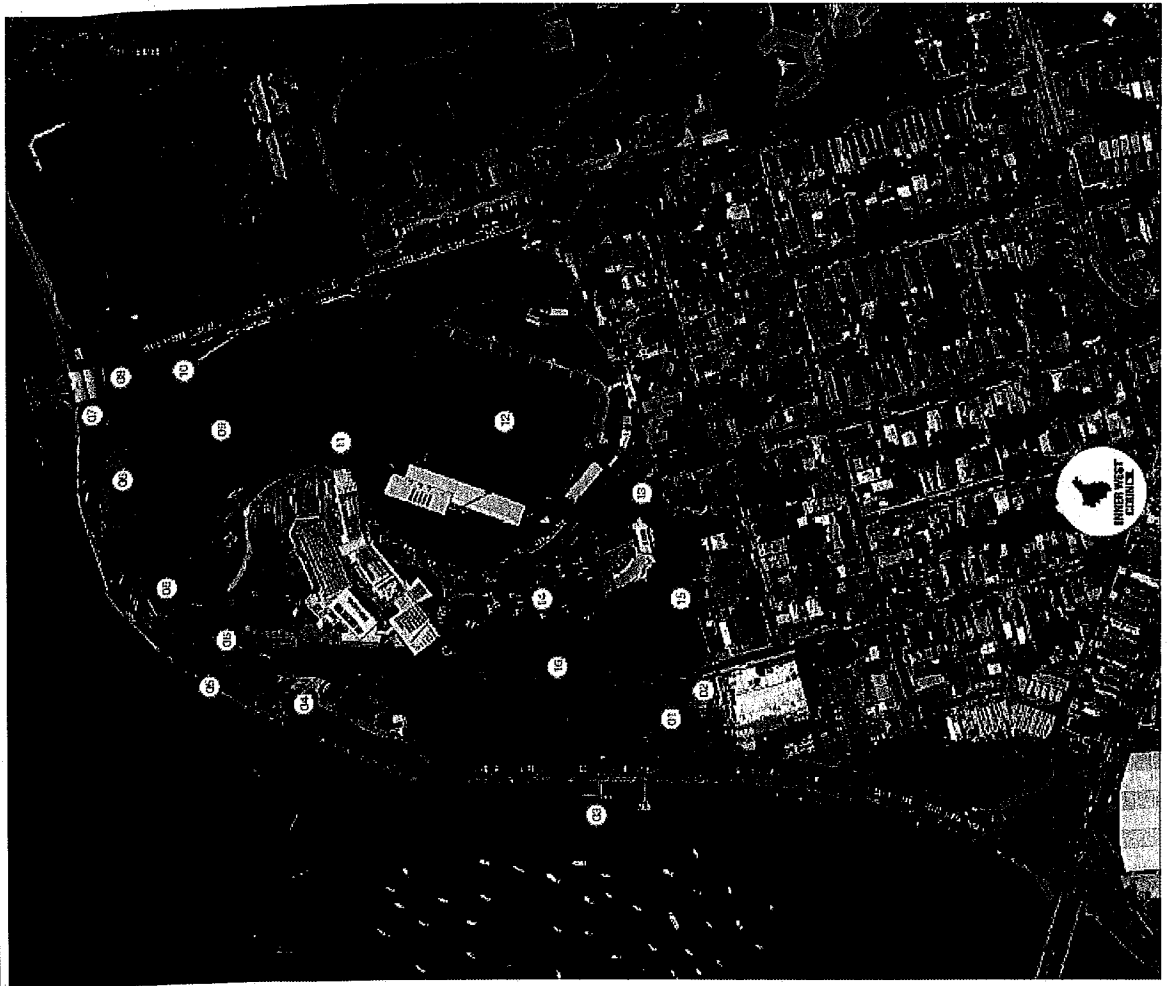
Park Plan of Management Priorities

- Leichhardt Park
 - Tempe Reserve
 - Pratten Park
 - King George Park
 - Ashfield Park
 - Petersham Park
 - Henson Park
 - Neighbourhood and Pocket Parks generic plans
- waiting*
- Rolling from end of 2019*

<https://www.innerwest.nsw.gov.au/about/policies-plans-and-regulations/park-plans-of-management-and-studies>



Leichhardt Park



- 01 New Skate Plaza
- 02 Upgrades to parking and road alignment
- 03 Removal of timber jetty/interpretation strategy
- 04 Reinvigoration of Giovinnazzo Grove
- 05 Interpretive strategy, fat original Lilyfield Baths site
- 06 Ongoing bush regeneration work
- 07 Possible accessible boatshed site
- 08 Shared pathway 'pinchpoint' - upgrade works
- 09 Synthetic playing field to Leichhardt Oval No. 2
- 10 New amenities building to serve playing field
- 11 Reconfiguration/ upgrade works to LPAC service road
- 12 Improved public access to Leichhardt Oval facilities
- 13 Adaptive re-use of Caretakers Cottage
- 14 Car park upgrades
- 15 Improved pathways
- 16 Reconfiguration of vehicle access - possible 'one-way' loop

Tempe Reserve



- 01 New entry gateways, including signage and security
- 02 Upgrades to existing pontoon/jetty and environs
- 03 Repatriation of Tempe Basin Motor Boat Association (TBMBA) lands
- 04 Rejuvenation of former bowling greens into specialised parkland area
- 05 Demolition of dilapidated Tempe Jets Club buildings
- 06 Upgrades to existing amenities building and surroundings (including new parking)
- 07 Rejuvenated saltmarsh/wetland basin
- 08 Upgrades to existing picnic shelters and environs
- 09 Upgrades to existing Playground
- 10 New multisports/ cultural activity building to replace Rodryn Webster Sports Centre
- 11 New amenities building to replace existing facility
- 12 New synthetic playing fields
- 13 Open parkland for passive recreation and/or sports fields
- 14 Alter current parking conditions to allow for timed parking
- 15 Accessible wetlands park and walkways
- 16 Off leash dog park

Proposed
EMS
Gateway
Landmark

5