



# **INNER WEST COUNCIL**

**Public meeting  
Wednesday 22 November 2017**

**WestConnex Stage 3 (M4-M5 Link)  
Environmental Impact Statement (EIS)**

**Meeting 1: Rozelle, Lilyfield  
& North Annandale  
construction & traffic issues**

**Jimmy Little Community Centre, Lilyfield**



# **INNER WEST COUNCIL**

**Presentation to public meeting  
Wednesday 22 November 2017**

**WestConnex Stage 3 (M4-M5 Link)  
Environmental Impact Statement (EIS)**

**Rozelle, Lilyfield & North Annandale  
construction & traffic issues**

**John Warburton**

**Deputy General Manager  
Community & Engagement**



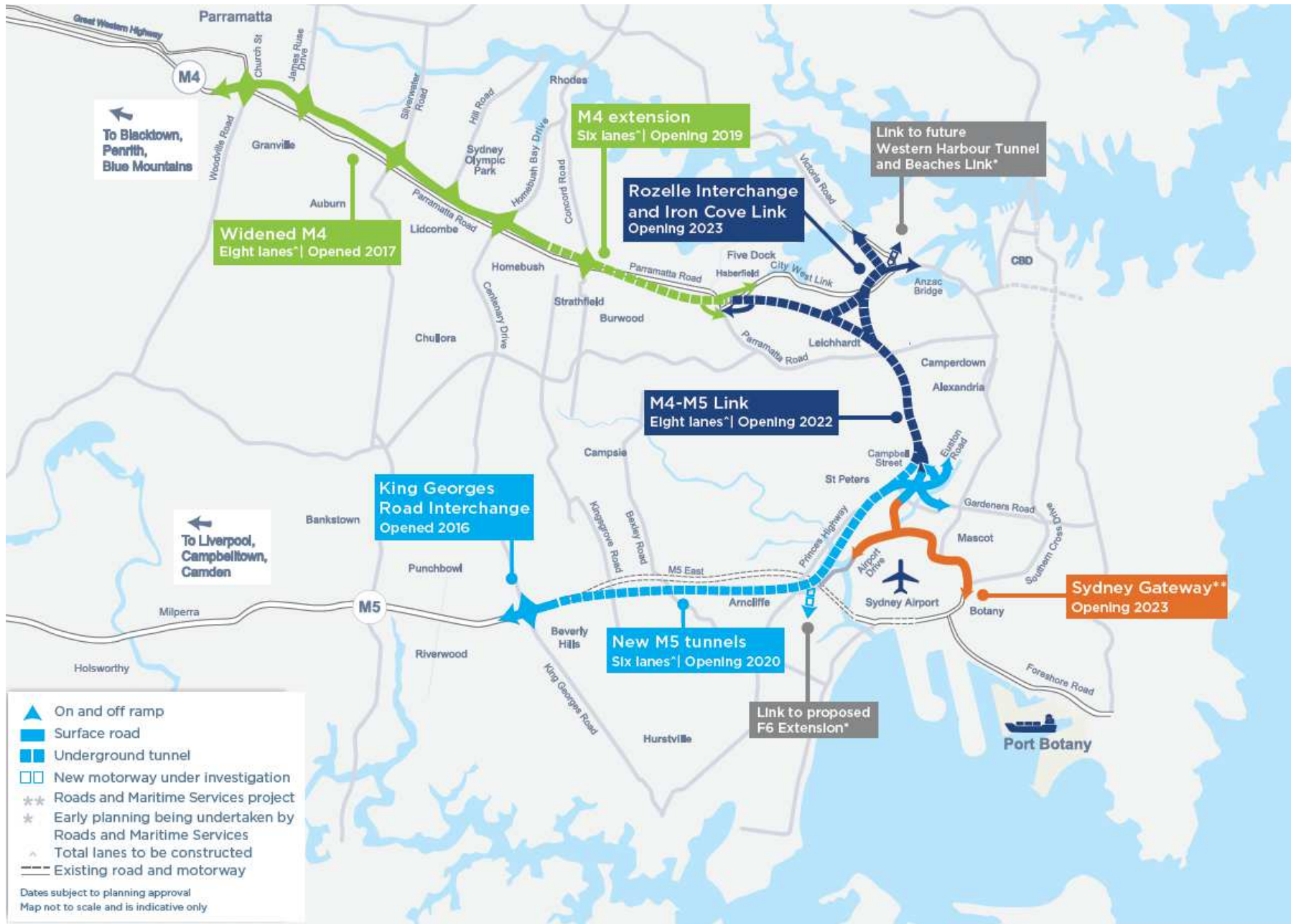
# INNER WEST COUNCIL

## **The purpose of this meeting:**

- Act on Council's resolution to consult
- Inform communities around each of the Stage 3 worksites of Council's issues (approx. 30 min)
- Hear the community's issues and send these to the DP&E for information (approx. 1 hour)

This is the first of five public meetings to be held in late 2017 & early 2018

# WestConnex Stages 1, 2 & 3



# Progress of the three stages

- **Stage 1** – M4 Widening completed & M4 East about 50% complete (opening 2019)
- **Stage 2** – King Georges Rd interchange completed & New M5 about 35% complete (opening early 2020)
- **Stage 3** – in planning – EIS submissions being assessed. Minister's determination expected early 2018. If approved, construction would commence in mid-2018. Stage 3(a) main tunnel would open 2022 & Stage 3(b) Rozelle Interchange would open 2023

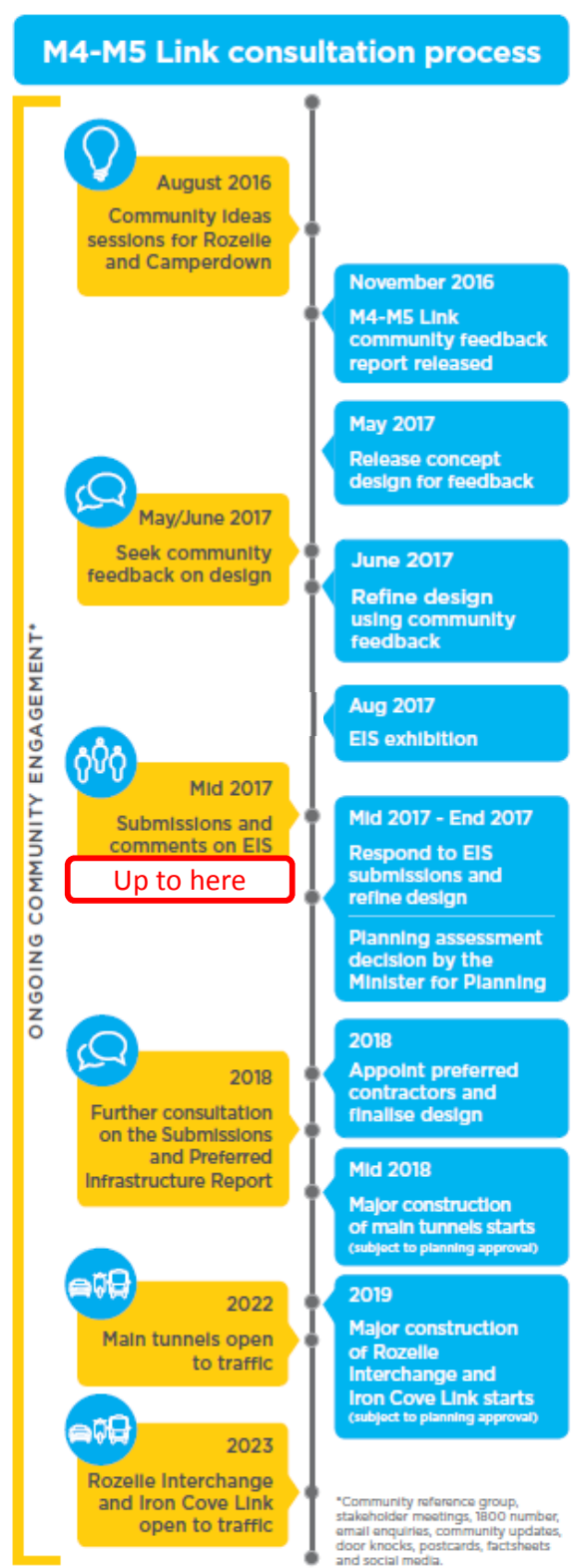
# WestConnex Stage 3



**LEGEND**

Project features	New M5	New M4	M4-M5 Link	Rozelle interchange	Iron Cove Link	Proposed WHTBL connections
Tunnel portal	Surface road	Surface road	Mainline	Surface road	Surface road	Surface road
Tunnel extent	Tunnel	Tunnel	Surface road	Surface road	Surface road	Tunnel
Tunnel connection	Stage 1	Stage 2	Tunnel	Tunnel	Tunnel	Tunnel
Ventilation						

# Stage 3 consultation



# Council remains opposed to WestConnex

Council resolution from 3 October 2017 meeting:

*“Inner West Council formally adopts a position of continued opposition in the strongest terms to the WestConnex project, both approved and future stages including Stage 3, consistent with the opposition of the former councils of Ashfield, Leichhardt and Marrickville.”*



# Council's 'process' issues from EIS

- Need for extension of exhibition period
- Likelihood that designs will further change
- Need for public exhibition of *Submissions Report & Preferred Infrastructure Report*
- Concerns that the Rozelle Interchange is technically difficult to construct – a separate planning process may be needed for this part
- Lack of detail in EIS on several key issues, with detail deferred to later stages

# Council's 'strategic' issues from EIS

- Increased traffic, reduced liveability/health and poor transport outcomes
- Project not consistent with several NSW Govt plans & initiatives
- Poor economic case - opportunity cost of \$17B & equity impact of tolls
- Preference for public transport, demand management & transit-oriented development options

# Council's 'local impact' issues from EIS

- **Construction impacts** – noise, vibration, dust, truck traffic, worker parking etc.
- **Operational traffic impacts**
- **Operational air quality impacts**
- Compulsory acquisitions
- Rozelle Rail Yards – clean up, design & delivery
- Possible loss of public transport corridors

# Construction issues from Stages 1 & 2

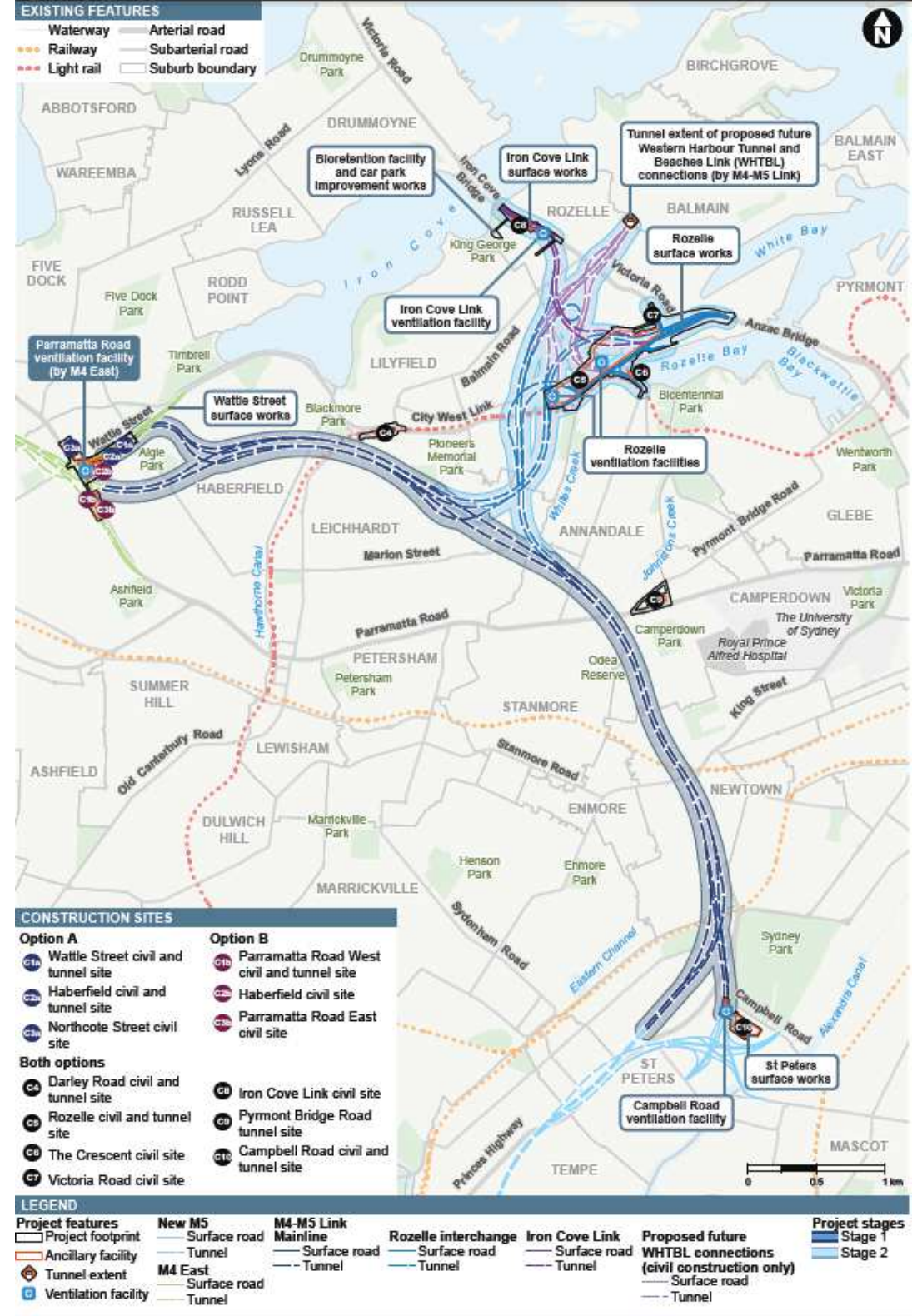
- Noise, vibration, dust, truck traffic, parking demand, night works etc.
- Cumulative impacts from project works & service works
- Health problems from stress & sleep deprivation
- Poor construction practices
- Vague, unenforceable conditions of approval
- Poor responses to complaints
- Complex complaints procedures
- Inadequate compliance resources
- Proponent's lack of willingness to resolve issues

# **Council's demands in EIS submission:**

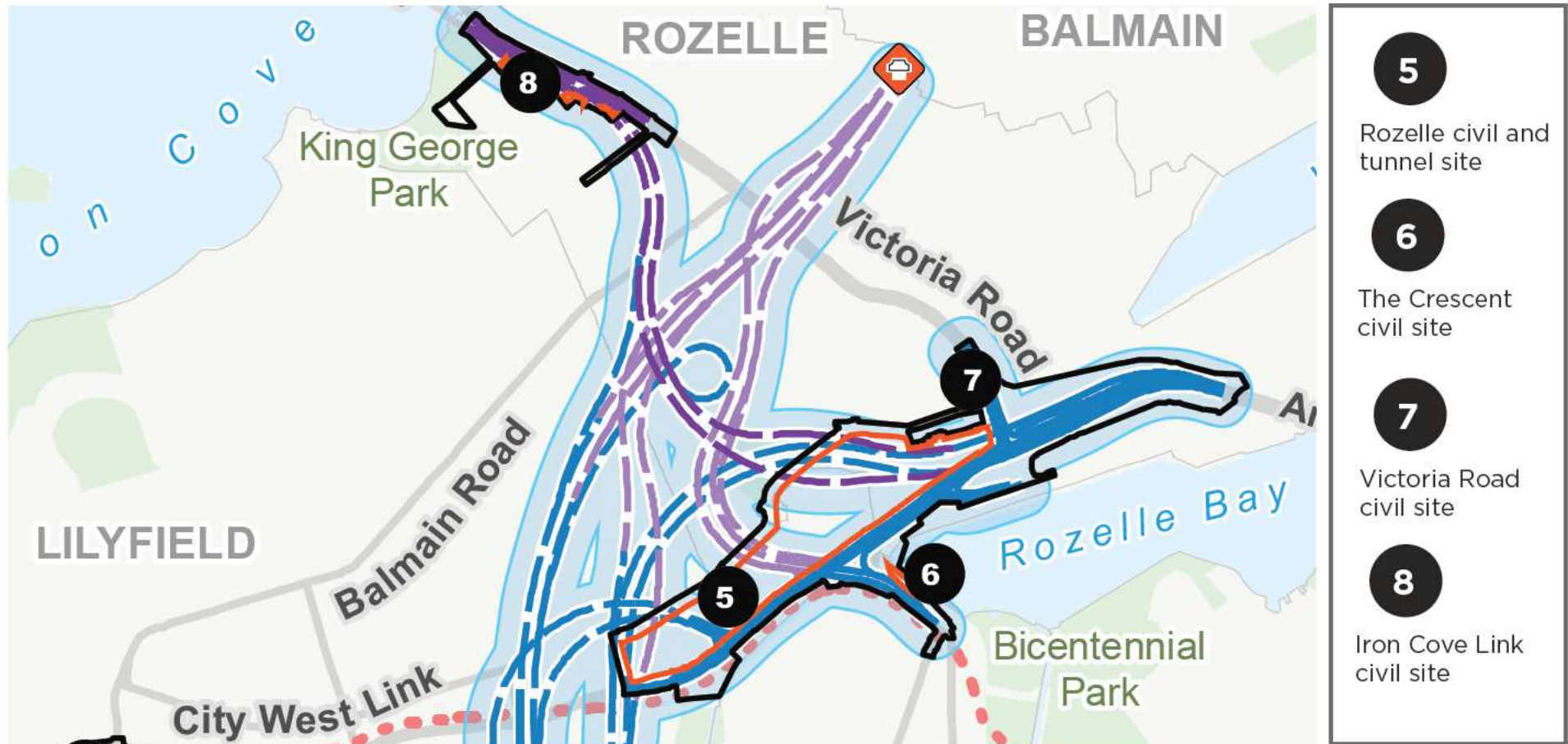
- WestConnex inquiry, with all lessons learned from Stages 1 & 2 to improve Stage 3
- Construction details to be publicly exhibited with Preferred Infrastructure Report
- Council & community to be involved in development/approval of construction/management plans
- Health study to be undertaken for Stages 1 & 2
- Strict conditions of approval & environmental licensing with adequate resources for enforcement
- Better management of cumulative impacts, particularly utility works
- Filtration of stacks & tunnels
- Night curfew on construction noise
- No heavy vehicles on local roads

# Stage 3 construction sites

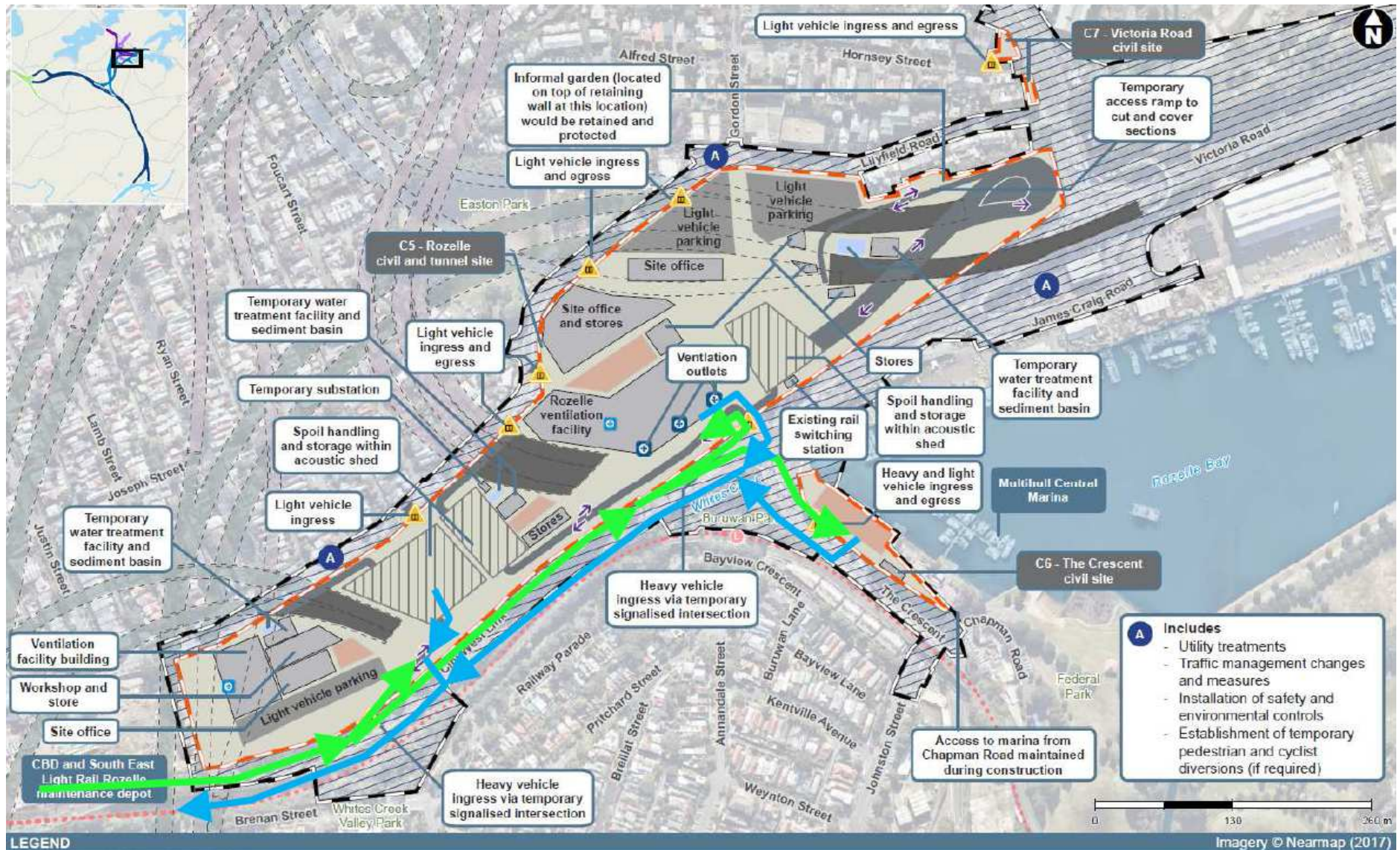
1. Haberfield/Ashfield (C1 – C3)
2. Darley Road (C4)
3. **Rozelle Rail Yards (C5)**
4. **The Crescent (C6)**
5. **Victoria Road (C7)**
6. **Iron Cove (C8)**
7. Bridge Road (C9)
8. St Peters Interchange (C10)



# Rozelle-Lilyfield construction sites



# C5, C6 & C7: Rozelle, The Crescent & Victoria Rd



## LEGEND

### Existing infrastructure M4-M5 Link

Existing infrastructure	Boundaries	Surface construction	Underground construction	Access and egress	Vehicle movements	Project features
Light rail	Project footprint	Access road	Rozelle interchange tunnel	Site gate	Light vehicle	Ventilation outlet
Light rail stop	Ancillary facility	Laydown area	Iron Cove Link tunnel		Heavy vehicle	Ventilation facility
	Surface works	Acoustic shed	Proposed future WHTBL connections (civil construction only)			



# **C5, C6 & C7: Rozelle, The Crescent & Victoria Rd**

## **- issues**

- Cumulative impacts from three sites in close proximity
- Rozelle site is large with many activities & truck movements
- All three sites have residential areas nearby
- Truck marshaling location not confirmed, so routes from marshaling sites to construction sites not known
- Facilities to remain permanently on some sites, e.g. large vent stacks at the Rozelle Rail Yards site
- Acquisition of commercial properties next to Rozelle Rail Yards & on Victoria Road
- Acquisition & occupation of part of Buruwan Park
- Local walk/cycle access issues
- Potential for cracking of buildings, particularly where tunnel depths are shallow
- Potential for flooding & water quality impacts on Whites Creek & Rozelle Bay
- Potential for cumulative impacts from Western Harbour Tunnel (if built)

# C5, C6 & C7: Construction traffic

	C5 Rozelle	C6 The Crescent	C7 Victoria Rd
<b>Vehicle access</b>	<p><b>Heavy vehicles</b> enter and exit site via new leg at City West Link / The Crescent intersection. Truck marshalling location not confirmed</p> <p><b>Light vehicles</b> – five access points will be created along Lilyfield Rd</p>	<p><b>Heavy &amp; light vehicles</b> enter and exit the site via The Crescent. Truck marshalling location not confirmed</p>	<p><b>Heavy vehicles</b> enter and exit the site via left-in-left-out access off the NB Victoria Rd. Truck marshalling location not confirmed</p>
<b>Vehicle volumes</b>	<p><b>Heavy</b> – 517 daily</p> <p><b>Light</b> – 350 daily</p>	<p><b>Heavy</b> – 10 daily</p> <p><b>Light</b> – 20 daily</p>	<p><b>Heavy</b> – 42 daily</p> <p><b>Light</b> – 140 daily</p>
<b>Parking</b>	400 worker spaces on-site	Minimal worker spaces on-site	Minimal worker spaces on-site, with four kerbside spaces removed along Hornsey St eastbound
<b>Duration</b>	End-2018 to end-2023	Early-2019 to end-2021	Early-2019 to end-2022
<b>Working hours</b>	Standard hours for surface works: 7am-6pm M-F & 8am-1pm Sat (no work Sun & public holidays). Tunneling works 24/7.		

# Buruwan Park, North Annandale



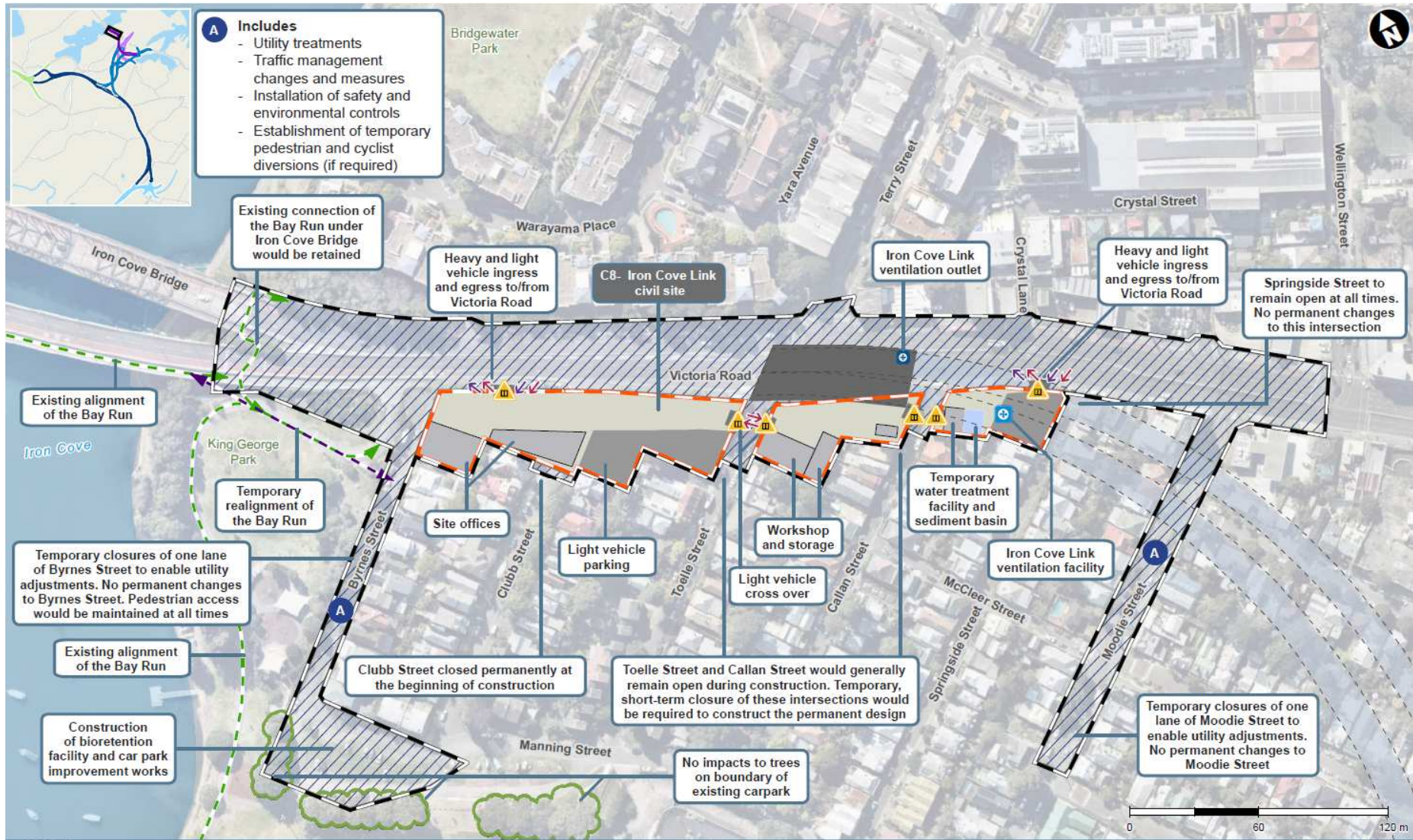
# Cnr Hornsey St & Victoria Rd, Rozelle



# Rozelle Rail Yards



# C8: Iron Cove Link Civil Site



**LEGEND**

The Bay Run	M4-M5 Link	Surface construction	Underground construction	Access and egress	Vehicle movements	Project features
Existing shared path	Project footprint	Access road	Iron Cove Link tunnel	Site gate	Light vehicle	Ventilation outlet
Temporary diversion	Ancillary facility	Cut and cover			Heavy vehicle	Ventilation facility
	Surface works					

## **C8 Iron Cove Link: construction issues**

- Dwellings close to construction activities
- Acquisition of commercial & residential properties along Victoria Road
- Reduced local vehicle access to King George Park via Clubb, Toelle & Callan Streets
- Removal of some kerbside parking spaces on Clubb, Toelle & Callan Streets
- Vent stack and bio-retention facility to remain permanently
- Acquisition & occupation of part of King George Park
- Victoria Road walk/cycle route detour

## **C8 – Iron Cove Link construction vehicle impacts**

- Heavy & light vehicles enter/exit the site via left-in-left-out access off Victoria Rd northbound
- Truck marshaling area not confirmed
- Heavy vehicles: 42 movements daily
- Light vehicles: 140 movements daily
- Some kerbside parking removed on Clubb, Toelle & Callan Streets
- Standard daytime working hours for surface works
- Duration of construction: end-2018 to end-2023
- Road access: Clubb St permanently closed at Victoria Rd and Toelle St & Callan St temporarily closed for construction



# Cnr Victoria Road & Toelle St, Rozelle



# Cnr Victoria Rd & Clubb St, Rozelle



# Victoria Rd over Iron Cove Bridge, Rozelle



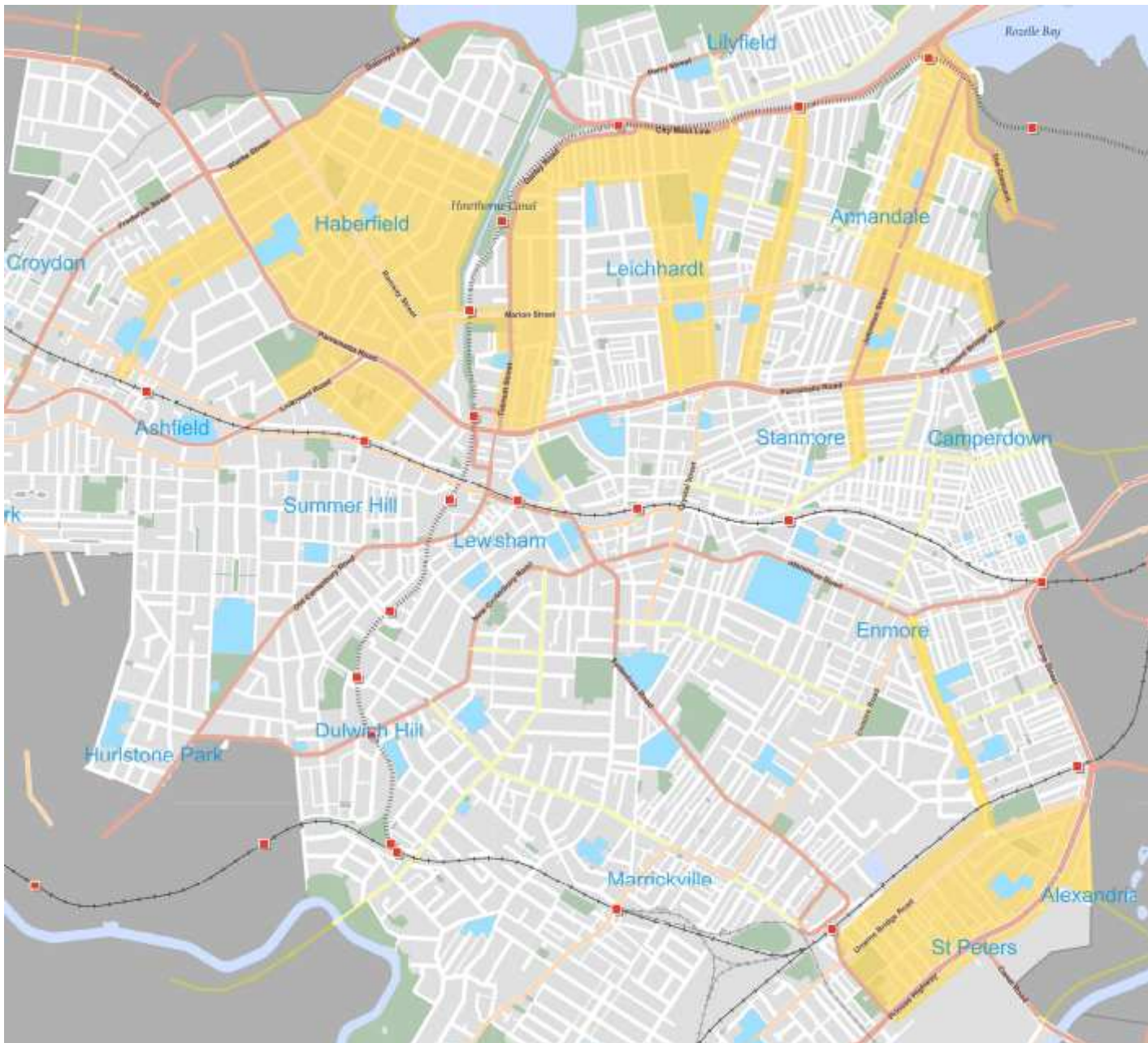
## **Operational traffic – general issues**

- General traffic growth (induced traffic)
- Increased traffic in specific areas around the three interchanges – Haberfield, Rozelle & St Peters
- Council seeks to traffic-calm all local roads that may be affected by additional traffic from WestConnex

## **Operational traffic – Lilyfield/Rozelle issues**

- Increased traffic on Johnston Street, The Crescent, Anzac Bridge & Victoria Road (north of Iron Cove Bridge)
- Need for certainty in reclaiming traffic space on Victoria Road & Parramatta Road

# Operational traffic – Council's areas of concern

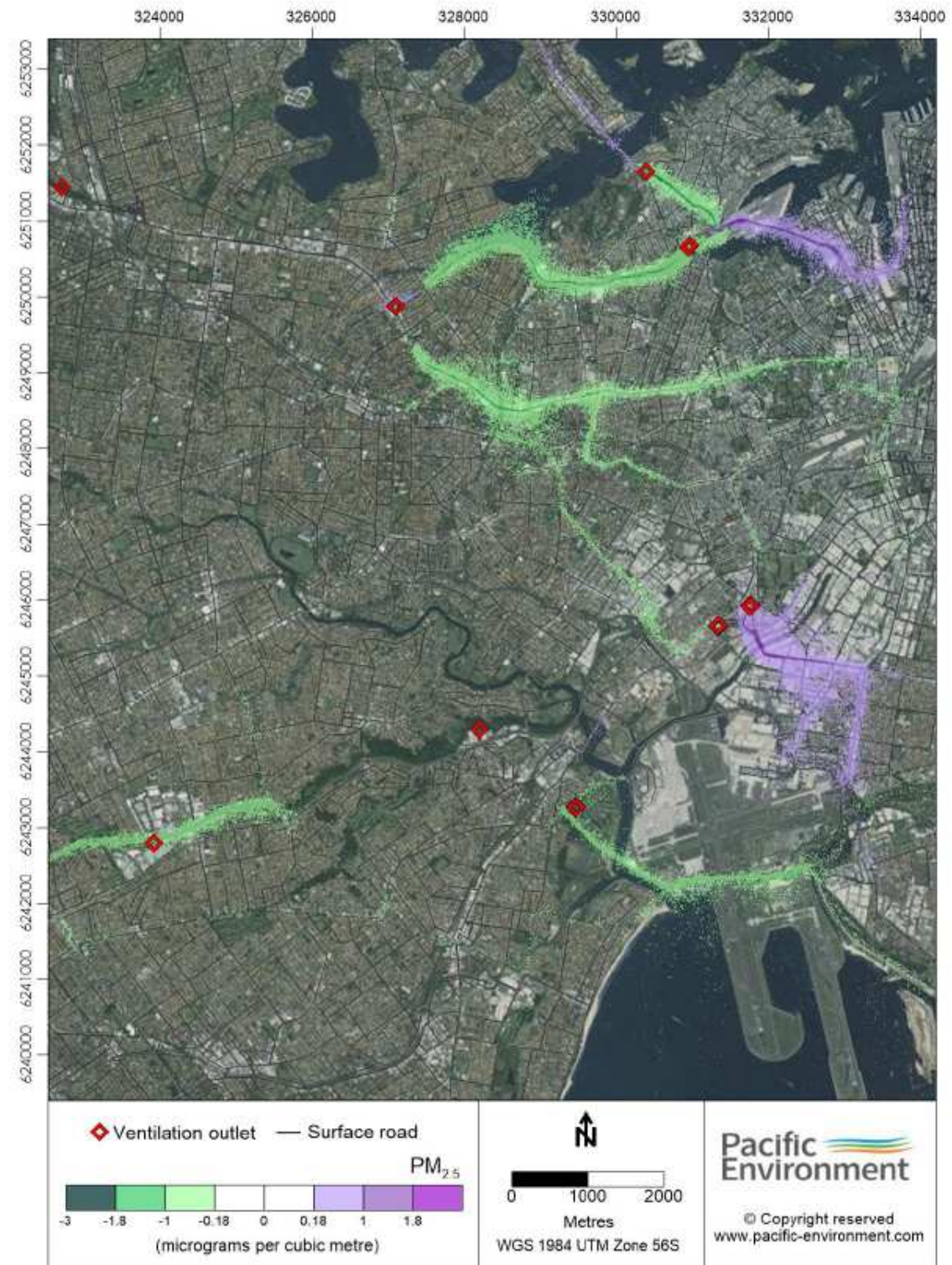


# Operational traffic: air quality

Surface & vent stack impacts

## Stage 3 stacks:

1. Haberfield
2. *Rozelle Rail Yards*
3. *Victoria Road*
4. St Peters



# Three vent stacks, Rozelle Rail Yards



# One vent stack, Victoria Road, Rozelle



# Next steps

- Comments noted at this meeting will be sent to DP&E for information
- Similar community meetings to be held in Leichhardt next week, and at Haberfield/Ashfield, St Peters & Annandale/Camperdown in Feb/March 2018
- Send your further issues to Council:  
[westconnex@innerwest.nsw.gov.au](mailto:westconnex@innerwest.nsw.gov.au)
- Decision on Stage 3 EIS expected in the first quarter of 2018



## **Further information**

To view the EIS & associated documents,  
visit the Department of Planning website:  
**[www.majorprojects.planning.nsw.gov.au](http://www.majorprojects.planning.nsw.gov.au)**

For updates from Sydney Motorway  
Corporation, visit:  
**[www.westconnex.com.au](http://www.westconnex.com.au)**

For updates from Council, visit:  
**[www.innerwest.nsw.gov.au/news---hot-topics/hot-topics/westconnex](http://www.innerwest.nsw.gov.au/news---hot-topics/hot-topics/westconnex)**