

Creative Trails Spaces

- 1** Watch House Gallery
179 Darling Street
Balmain
- 2** Kirana Haag
202 Darling Street
Balmain
- 3** Art Gallery On Darling
307 Darling Street
Balmain
- 4** Punch Gallery
340 Darling Street
Balmain
- 5** The Balmain Space
79 Beattie Street
Balmain
- 6** Artspark Studio
43 Merton Street
Rozelle
- 7** F Tanner Baker Micro-Galleries
60 Evans Street
Rozelle
- 8** Kate Owen Gallery
680 Darling Street
Rozelle
- 9** Embellish Atelier
128 Victoria Road
Rozelle
- 10** Salon Callan
44 Callan Street
Rozelle
- 11** Arterial Gallery
747 Darling Street
Rozelle
Saturday 23 November, 10am to 5pm ONLY
- 12** One+2 Artist Studios
483 Balmain Road
Lilyfield

Art Installations

- ▲ Voice Crossings by Dr Andre Grenwell
Sunday 24 November, 12pm to 3pm ONLY
ONGOING PERFORMANCES
Balmain Glass (Light) House
by Stephen Burstow
Balmain Town Hall
370 Darling Street, Balmain
- ★ Wishing Wings by Aaron McGarry
Site 1. Balmain Town Hall
Site 2. Gladstone Park
Site 3. Entrance To Callan Park
- ◆ Real State Tenancies by Emily Valentine
St Andrews Congregational Church
217-223 Darling Street, Balmain

Music Events

- △ Classics in Callan Park
Callan Park,
Balmain Road, Lilyfield
Saturday 23 November, 5pm to 8pm
- ☆ Jazz In The Park
Gladstone Park,
Darling Street, Balmain
Sunday 24 November, 3pm to 6pm

edge CREATIVE TRAILS

BALUDARRI - Balmain
23 - 24 NOVEMBER 2019
10am - 5pm

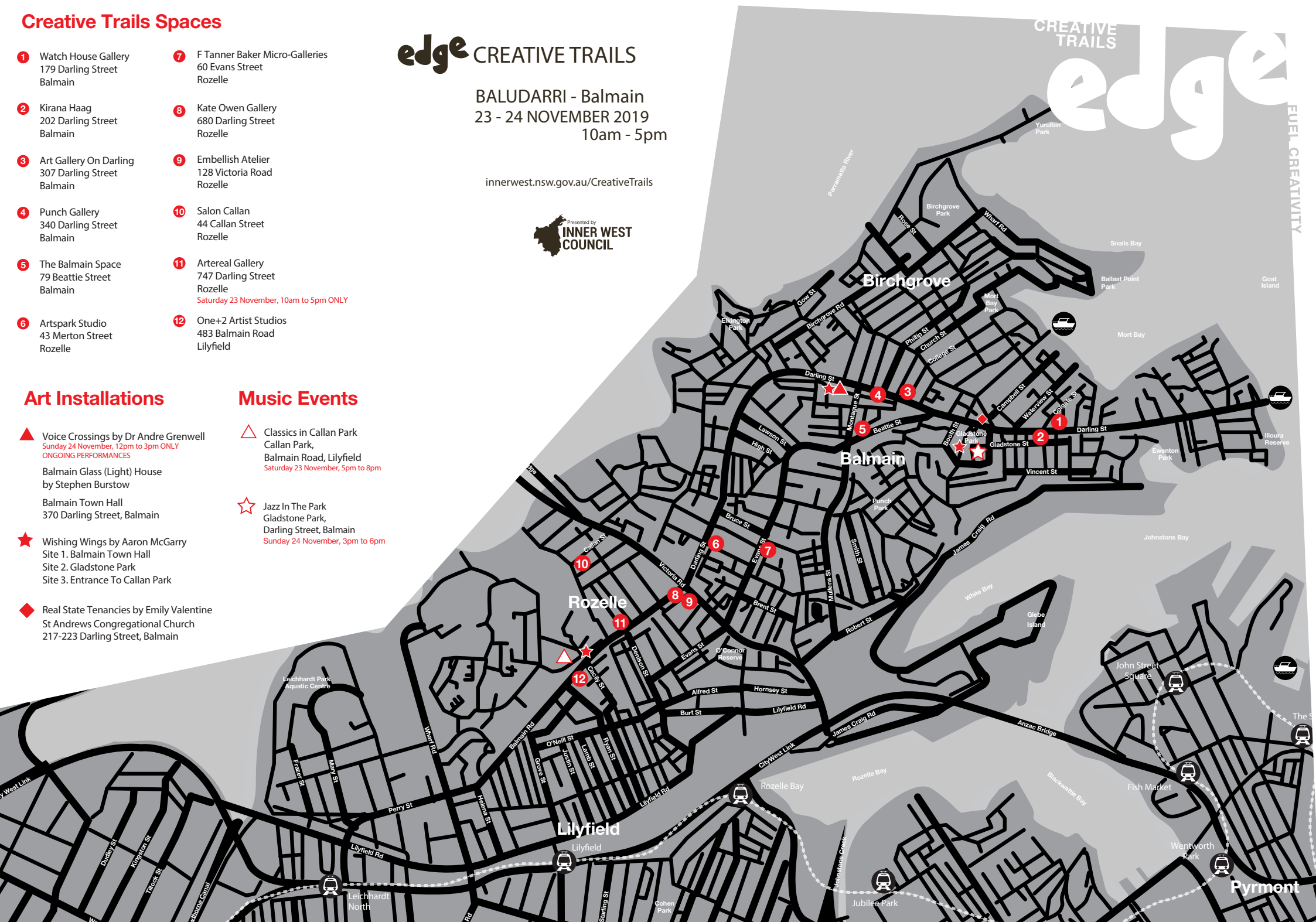
innerwest.nsw.gov.au/CreativeTrails



CREATIVE TRAILS

edge

FUEL CREATIVITY



Opening Night

21 November, 6:30-8pm, Balmain Town Hall

A hub of entertainment and visual wonder, featuring Hot Potato band, Dr Andre Grenwell and EDGE artists. The adjoining glasshouse is transformed with art, music and light.

EDGE Creative Trails

23-24 November, 10am-5pm

Discover where art is made. Guided tours by foot, bus or bike to local studios and galleries. Bookings essential online.

ART POP-UPS

21-24 NOVEMBER

Real State Tenancies by Emily Valantine
St Andrews Church Balmain

Balmain Glass(Light)House by Stephen Burstow
This fantastical lightbox transforms Balmain's glasshouse with audio visual storytelling.

Wishing Wings by Aaron McGarry
Large ribbon wings shine in the light and dance on the wind. Various locations.

My Kind Co. Collective *The Art of Play* by Lisa Tatman

Bands at the Bridge
Historic photo exhibition of The Bridge Hotel along Victoria Road.

Art in Shop Windows by
Sydney Secondary College

EDGE Pop-Ups

22 NOVEMBER

8pm The Screaming Jets, Bridge Hotel

23 NOVEMBER

All day Historical music photography exhibition, Bridge Hotel
Live music, Red Lion Hotel

11am-3pm Rozelle Soundscapes – performance and music,
Chapel Hill, Darling Street

12-3pm Live street art & TAFE music program, Sackville Hotel
Rebekka Neville Five Star Caravan, Gary Own Hotel
Pub tours, various stops

1-5pm One+2 Artist Studios exhibition & open-air painting,
Callan Park

11am-5pm Persian Coffee House,
Community Refugee Welcome Centre

5-8pm Classics at Callan Park
Members from The Metropolitan Orchestra play
crowd favourites to a beautiful sunset backdrop.

24 NOVEMBER

All day Live music, Red Lion Hotel

10am-3pm Gazebo Stage – performance and music,
Loyalty Square

11am-5pm Persian Coffee House,
Community Refugee Welcome Centre

12-3pm Voice Crossings by composer Dr Andree Greenwell,
Balmain Town Hall
Live music by The Mountain Devils, Royal Oak Hotel
Pub tours, various stops

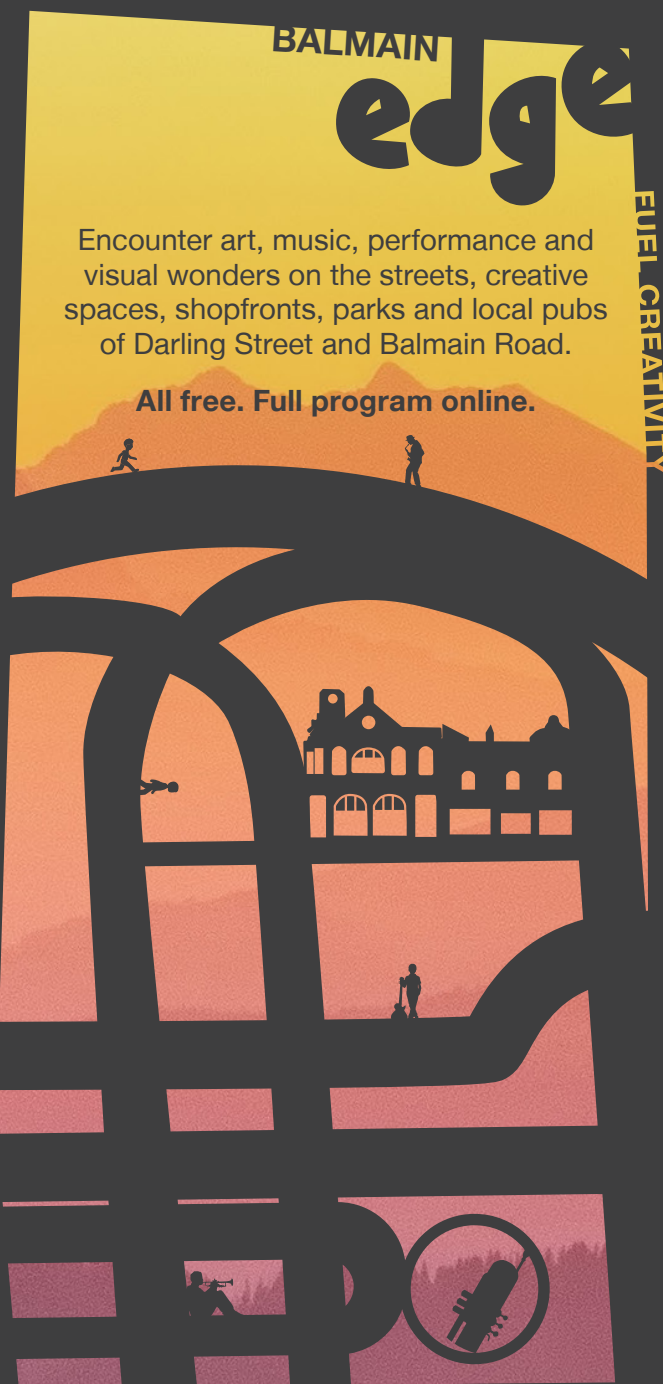
1-3pm Peter MacDonough Trio, The Cricketers Arms Hotel

2-7pm Live music, Unity Hall Hotel

3-6pm Live jazz, Workers Bar & Kitchen
Live music, Exchange Hotel
Pints at schooner prices, Dicks Hotel

3-6pm Jazz in the Park, Gladstone Park
Pack a picnic of delights from local artisans and join
us for an afternoon of jazz headlined Emma Pask.

6-8pm Geoff Bull & the Finer Cuts,
Gladstone Park Bowling Club



Encounter art, music, performance and visual wonders on the streets, creative spaces, shopfronts, parks and local pubs of Darling Street and Balmain Road.

All free. Full program online.